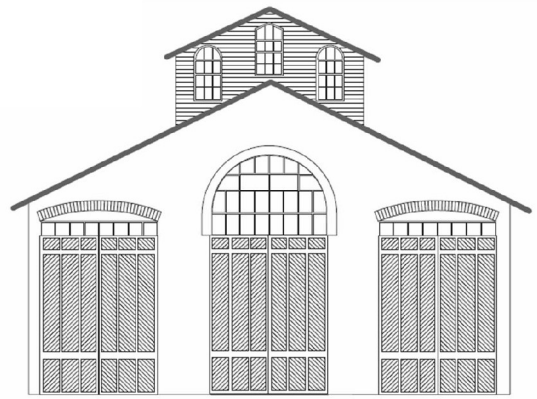


# THE CAR HOUSE

Monthly Newsletter of  
**Division 8** North Central Region  
National Model Railroad  
Association



Website: <http://div8.ncr-nmra.org>



## News: October 19, 2009

### NCR Convention

Ft. Wayne, IN: The NCR Convention (October 15 – 18) was a roaring success.



This year's annual event featured superb clinics, a fantastic set of prototype tours, layout tours, operating sessions, and contests. But the best

thing of all was the camaraderie among model railroaders.

Division 8 was well represented with over two dozen members many of whom appear in the group photo taken at the awards brunch.



Can you name everyone in this photograph?

### NCR Convention Contest Winners

Ft. Wayne, IN: Participants in this year's convention witnessed some excellent model building and good photography.

**Division 8 members** were very successful in bids for places in the model and photo contests.

**Al Crowley** won **Best of Show** for his HO scale Burt Station



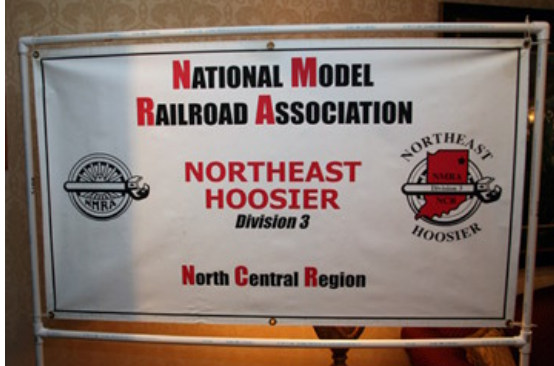
**Joel Goldberg** won **1<sup>st</sup> Place** in Displays with his HO scale coal dock



### NCR Convention Atmosphere

Ft. Wayne, IN: Scenes around the registration were filled with information about the convention and upcoming events.

*The welcome*



*Registration was efficient*



Don't forget next year's NMRA Convention in Milwaukee



There were a number of excellent portable/modular layouts for attendees to see as well.

*[contest winners continued]*

Joel also won **1<sup>st</sup> place** in structures with his HO scale corn crib.



Terry Bossick won **2<sup>nd</sup> Place** for his trolley.



In the photo contest, **Bill Gawthrop** claimed three winners:

**1<sup>st</sup> Place** Prototype Color Print:



**2<sup>nd</sup> Place** Model Color Print:



**Contest on!**

Troy, MI: *Reminder from last newsletter:* Al Crowley announced the model of the quarter for the 4<sup>th</sup> quarter of 2009. Al made available layout print of the St. Paul, Minnesota Flag Stop for contestants to use in constructing this building.

The contest rules are:

1. The flag stop may be built in any scale
2. The base may not exceed 40 x 50 scale feet
3. Any material may be used for the wall and roof.
4. Walls are lap siding boards and scalloped shingles.
5. Standard parts can be used.
6. Platform size may be reduced

Contestants are to bring their completed models for judging at the **January 21<sup>st</sup> 2010** Division 8 meeting.

Plans for the flag stop were given with last month's newsletter.

*[contest winners continued]*

**Honorable Mention** Model Color Print:



**Division 8 Survey**

Troy, MI: *Reminder from last newsletter:* The Board of Directors is asking Division 8 members to tell us a little more about your layouts. If you haven't done so, please take a few moments to fill out the survey at the end of this month's newsletter and email it to John Jackson (keeper of the Division Roster) [jdsmjackson@sbcglobal.net](mailto:jdsmjackson@sbcglobal.net). Members can also hand the survey to John at the next meeting.

**Layout Tours – October 4**

**Gene Kome** models the Santa Fe of the 1970's and 80's in western Illinois, a section



popularly called the "Racetrack" because of its fast freights between Chicago and Kansas City. His HO scale

layout features farms, feed mills, a cement plant, small towns, a glass bottle plant, and a food distributor.

**Rick Ware** has both an indoor and outdoor layout.



The indoor layout features the Chesapeake & Ohio, Greenbrier Division in HO scale. The scenery features

autumn foliage. The track plan is a point-to-point loop along three walls and is based on the prototype branch line and Cass Scenic Railroad in eastern West Virginia during the 1960's. The layout features the towns of Roncerverte, Marlinton, and Cass with a number of scratch-built models of

# News: October 19, 2009



actual structures.



The outdoor layout in G scale is called the Loon Lake Railway & Navigation Company and features live plants and running water. This freelanced pike is loosely based on upper Michigan logging and mining. The track plan is a single track main of several hundred feet in a folded loop with passing and industrial sidings.



### Upcoming Events

1. **November 1, 2009:** Gratiot Valley Train Show & Sale at the Gibraltar Trade Center, Mt. Clemens, MI <http://www.gvrr.org/11-09f1.htm>
2. **November 7, 2009:** The 10th Michigan Railroad History Conference will be held at the Cascade Manor House, Jackson, Michigan. <http://www.michiganrailroads.com/MRHC/MRHC-Home.htm>
3. **November 14 / 15 and November 27 /28 /29:** Detroit Model Railroad Club Open House, Holly, MI <http://www.dmrcc.org>
4. **January 17, 2010:** Paris Junction Model Train Show, sponsored by WOD /NFR / NMRA, <http://www.londongrs.com>

### November's Clinic

Remembrances from the NMRA National Convention by Larry Wolohan and Jim Zinzer

### Division 8 Board of Directors

Superintendent: Jerry Shanek  
[Jerry\\_shanek@yahoo.com](mailto:Jerry_shanek@yahoo.com)  
Secretary: Bill Gawthrop  
[wegawthrop@aol.com](mailto:wegawthrop@aol.com)  
Treasurer: John Jackson  
[jdsmjackson@sbcglobal.net](mailto:jdsmjackson@sbcglobal.net)  
Director: Allen Crowley  
[Crowley1127@yahoo.com](mailto:Crowley1127@yahoo.com)  
Director: Curt Danielewicz  
[CDanielewicz@ameritech.net](mailto:CDanielewicz@ameritech.net)

### Next Meeting's Show and Tell

The topic for next (November) meeting's Show and Tell is:  
Anything from the NMRA National Convention in Hartford, CT or the North Central Region Convention in Ft. Wayne, IN. Of course, you may bring in your prized current project in lieu of something from the convention(s).