

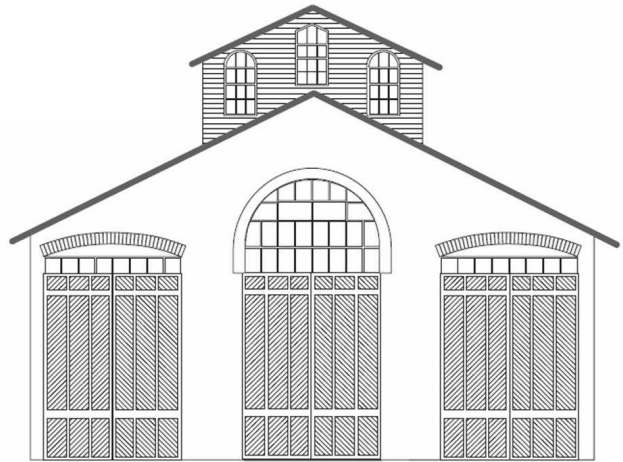
CAR HOUSE



Website:
<http://div8.ncr-nmra.org>



Website:
<http://www.nmra.org/>



THE NEWS

OCTOBER 17, 2013

Model of the Fourth Quarter 2013

Troy, MI:



We continue with the theme - models of the Quarter in 2013 featuring a scene. The fourth quarter of 2013 Model of the Quarter features **an industrial scene**.

Here are the rules:

1. The scene may be in any scale.
2. The scene must be transportable to the meeting. In other words the judges must be able to judge the scene in person.
3. The minimum size for the scene is:
 - 3.1. 6" x 6" in N or smaller scale
 - 3.2. 12" x 12" in HO scale
 - 3.3. 18" x 18" in S or O scale
 - 3.4. 24" x 24" for scales larger than O
4. The scene must contain:
 - 4.1. "Vegetation" in the form of ground cover and may also include bushes, trees, "water," etc.
 - 4.2. An industrial building or buildings.

Continued on next page

Editorial Note

You may have been wondering if you missed the Car House in your email. Fear not; this edition was delayed so as to capture some of the flavor of the NCR Convention in Troy.

Bill Gawthrop



Next North Central Region Convention
Coming up sooner than you think!
April 25-27, 2014

Register Now!

http://www.divisiononencr.com/Convention/Toledo_2014.html

CAR HOUSE

October 17, 2013

THE NEWS

Continued from the previous page

- 4.3. A railroad track or tracks fully ballasted and weathered.
- 5. Elements in the scene may be either built from scratch, kit-built, or kit-bashed.

Judging of entries will be conducted at the upcoming December 19th meeting.

Convention News

Troy, MI: The Convention was a success [*in the opinion of the Editor*]. A full report is currently being compiled by John Jackson. Salient points about this convention will be presented at the November 21st. Division 8 meeting.

Contest winners, photos and news brief about the Convention will appear in the upcoming edition of the Car House.

I did feel compelled to take a few candid shots around the venue to capture the flavor of the Convention.



Grand Prize and Memorial Prize Winners included:

- **Grand Prize [donated by Empire Hobbies]** winner was Dave Katona
- **Irv Schultz Memorial Prize [donated by Athearn]** winner was Tom Hawley
- **Dick Dittus Memorial Prize [donated by Athearn]** winner was Deborah Wilmoth



Bill Gawthrop presents Deb with her prize, an HO scale Athearn diesel decorated for CSX.

CAR HOUSE

October 17, 2013

THE NEWS



Layouts



Show & Tell

This Month's Theme was *Anything Milwaukee Road* or *Your Current Favorite Project*

Tim Fisher offered an HO scale wood refer decorated for Union Refrigerator Transit, labeled Milwaukee Road.



Phil Doolittle brought in an HO scale rib-side box car decorated for Milwaukee Road. The model is by Exact Rail.



CAR HOUSE

October 17, 2013

Dan Lewis displayed an N scale two-stall engine house. This engine house represents stalls one and two of the prototype Harlowton, Montana roundhouse.



Larry Wolohon offered a Milwaukee Road rib-side box car in O scale. Photos and dimensional data for the prototype were featured in Railway Prototype Cyclopedia #13 [published, 2006].



Fred Cosgrove brought in an HO scale rib-side box car decorated for the Milwaukee Road. This 50' model is a product of Roundhouse [Fred believes].



Ken Scherer brought in a hopper car and box car decorated for the Milwaukee Road. Both models are in HO scale.



Bill Gawthrop offered an HO scale outside-braced box car lettered for the Milwaukee Road.



This model was offered by Roundhouse in the 1980's and allowed the modeler to number his car.

Paul Runyan displayed a Milwaukee Road Alco DL-109 diesel. The HO scale model is by Life Like – Proto. The prototype was built between 1939 and 1945 and included only 74 units.



Marv Linke offered an N scale Hudson decorated for Hiawatha service on the Milwaukee Road. Marv started with a Con Cor Hudson to which he applied a GHQ conversion kit. Marv assembled, painted and detailed the model including scratch-building the tender frame.



Walt Connell offered a Milwaukee Road RSD4 in HO scale.



CAR HOUSE

October 17, 2013

Terry Bossick brought in a GE U-36C decorated for the Milwaukee Road. The HO scale model is by Atlas.



John Jackson offered a 1985 NCR, Division 8, 50th Anniversary Convention Car. The locomotive and coach models were found in a South Carolina antique shop by a Tidewater Division member. The person contacted John [as Div. 8 Super] to return it to its "home road" and commemorate our 2013 Convention.



Phil Kenyon brought in an N scale Fairbanks Morse H-12-44 diesel. The Minitrix model is decorated for the Milwaukee Road.



Greg Rich brought in a CM&StP 50 foot box car. Greg built this model from a LaBelle kit with the addition of a hobo riding on the truss rods..



Tom Weiss brought in three tinplate Lionel F3's which were originally offered from General Mills. Tom bought the locomotives and train of 4 cars for \$4 at a train show in 1975. Tom also brought in a Roundhouse ore car which he repainted the frame and added Kadee couplers and metal wheel sets.



Vince Robinson offered a brass Pennsy Class H-10 2-8-0 and a PS-4 tender. Both are O scale models.



Bob Scherer displayed two HO scale box cars decorated for the Milwaukee Road. One is an old MDC model the other is a new.



Please forward any and all erratta to Bill Gawthrop, Car House editor at wegawthrop@aol.com. Virtual tomatoes are also welcome..... it's part of our quality improvement.....

CAR HOUSE

October 17, 2013

This Month's Clinic

October's clinic featured the best layouts and other activities of the NMRA National Convention by Larry Wolohon. During the clinic Larry, Dean Pyers, and Jim Zinser presented snippets of their respective experiences at the Convention. John Bopp also contributed to this clinic.



Upcoming Events

- **Dec. 1, 7-8, 14-15:** Detroit Model Railroad Club Open House, Holly, MI
- **Dec. 1:** Rails on Wheels' SE Michigan Train Show and Sale--- Washtenaw Farm Council Grounds, Ann Arbor, MI
- **Dec. 1:** Railroadiana Toys & Trains, SS. Simon & Jude Church Hall, 32500 Palmer Road Westland, MI
- **Dec. 15:** Wolverine Train Club Show, United Food & Commercial Workers Hall, 876 Horce Brown Drive Madison Heights, MI
- Dec. 29: Monroe Model Train Show, Monroe County Fairground, Monroe, MI

November Clinic

The November clinic will be trumped by a flea market. Bring your railroad and model railroad stuff that need a new home; name your price; and, bid your items a happy home.

Division 8 Board of Directors

Superintendent: John Jackson
jdsmjackson@sbcglobal.net
 Treasurer: Paul Runyan
prrdi61@sbcglobal.net
 Secretary: Bill Gawthrop
wegawthrop@aol.com
 Director: John Gavasso
 Director: Jerry Shanek
Jerry_shanek@yahoo.com

Next Meeting's Show and Tell

Show and Tell about your items in the flea market. These items are for swap or sale; so, be prepared to part with them for a price.