

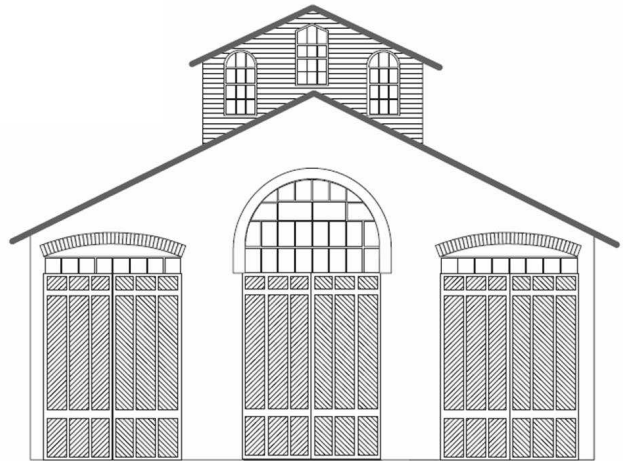
CAR HOUSE



Website:
<http://div8.ncr-nmra.org>



Website:
<http://www.nmra.org/>



The News

October 20, 2016

From the Super

Troy, MI: Do you spend time in Ontario? I do. A lot, actually. The Canadian railroad scene is interesting, what with ubiquitous powerhouse CN, number two CP with its red engines, history of uniquely styled steam, and main that hugs the cliffs on the north shore of lake Superior, chilly Ontario Northland, and passenger lines named "GO" and "VIA". It's fallen flags are fascinating as well, railroads like "Toronto, Hamilton and Buffalo", "Canada Southern" (part of NYC), and my personal favorite, the sleepy "Hamilton and Northwestern" that occasionally used triple-headed moguls to drag a train up the Niagara Escarpment out of Hamilton. Books on Canadian railroading abound.

I'm in Canada for the Brampton Train Show. Brampton is a large and growing suburb northwest of Toronto, which has a remarkably small county fairground where this show is held. I've taken my Free-mo modules there for several years now, to participate in a large layout setup with the Credit Valley Free-mo Club, the Doubleheaders Model RR Club of the Guelph area, and the CASO (Canada Southern) modelers group. If you saw the Free-mo setup at the Indianapolis NTS, you saw some of these modules, most stunning of which is the long, accurately modeled bridge that used to carry the Canada Southern (New York Central) over Kettle Creek. It still stands at St.

Thomas, Ontario. All in all, this layout is almost as large as the one at the National Train Show. Besides, it's a friendly and helpful group of guys.

The Brampton Train Show is small compared to Gratiot Valley and Avondale, but is surprisingly good, based on vendors who show up. Rapido Trains has a display there, as do FastTracks, Mt. Albert Scale Lumber, ITLA (Imagine That Laser Art), GLX Scale Models, Atlas, ESU, and Circuits4Tracks. In addition, there are many excellent modular layouts, including one in S scale, one in On30, and several in HO and N.

But the most unusual thing about this show (at least to an American visitor) is the plethora of vendors selling British trains. Used to be, I never paid these any attention, but with one of my fellow Stoney Creek members modeling London right after the war, and with my recent time and train ride in England, these have now caught my attention. There must have been at least a half dozen vendors displaying these colorful engines and "goods wagons". Good thing no one had a model of the "Raveningham Hall", the one in my photo in the NTS photo contest, or it might have had to follow me home!

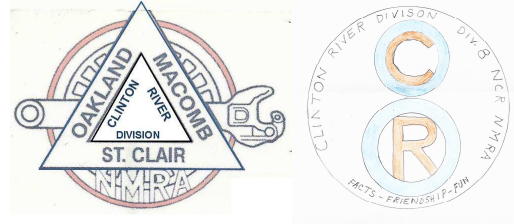
Phil

CAR HOUSE

October 20, 2016

Division Logo

Troy, MI: We are still looking for a member or members to offer ideas for a new logo design for the Clinton River Division. Don't be bashful! Two sketches have been submitted thus far as seen at the right.



Puzzle

Troy, MI: The answers to Terry Bossick's crossword puzzle appear at the end of this newsletter.

Recruiting

Troy, MI: Ken Scherer reports that he and brother Bob will man the Recruiting table at the upcoming Gratiot Valley Train Show as well as the upcoming "A Train."

Show & Tell

This Month's Theme was Anything Soldered

Dave Thornton brought in an O scale 46' scratch-built flat car. The brass sides include soldered bracing.



John Jackson offered a ball mill building for his cement plant. John soldered the parts to assemble the HO scale building from a Suydam kit.



Bill Gawthrop displayed a brass HO scale Jordan Spreader. The model is an Overland product.



John also brought in an NCE [CP6] circuit protection board.

Richard Kubeck brought in binder clips which he uses for heat sinks.

- _____
- _____
- _____
- _____
- _____
- _____



Ken Scherer offered turntable contacts, a toggle switch and turntable locks.



CAR HOUSE

October 20, 2016

Kent Aughe displayed his latest efforts making trees from Sedum. His raw materials included; a) sedum flowers, b) floral tape, c) diluted white glue, d) ground foam (many colors), and e) chalk. Here are the results.



Phil Doolittle displayed his latest results after weathering 12 HO scale aluminum "Bethgons." Phil used an air brush to achieve the effects. He also replaced the plastic wheels with metal ones.



Tom Weiss brought in an N scale turnout which he made at the National Convention at a "Modeling with the Masters" clinic.



Bill Moore offered the HO scale Robertson Paper Company which he built from a Monster Models (laser-cut) kit. The prototype was in Bellows Falls, Vermont.



Steve Akers brought in a grain hopper which had been soldered together. He also brought in HO scale people.



Terry Bossick displayed a flashing crossing signal which he assembled from an article in an old issue of the NMRA magazine from the 1980's.



CAR HOUSE

October 20, 2016

Paul Runyan offered a copy of the current Michigan History Magazine which includes an article about the Pere Marquette and its 2-8-4 locomotives including the 1225,



Fred Cosgrove brought a partially assembled brass O scale Russ Briggs kit and a Chicago south Shore & South Bend RR 61' combine and coach.



John Gavasso offered a Mantua HO scale 2-6-0, mogul which he rescued from an estate sale.



Larry Wolohon brought in an O scale turnout which he constructed from a Fast Tracks jig.




Jim Zinser displayed an HO scale rail car which he built from a Roundhouse kit



CAR HOUSE

October 20, 2016

October Clinic	
<p>Marv Linke gave a clinic on soldering basics in which he described the tools and techniques for soldering in model railroading.</p>	
Upcoming Events	November Clinic and Show & Tell
<ul style="list-style-type: none"> ➤ October – December: Steam Railroad Institute, Owosso, MI, Fall Schedule of events; http://michigansteamtrain.com/schedule ➤ October – December: Redford Model RR Club, Inkster, MI, Open House Schedule: http://www.redfordmodelrailroadclub.com/ ➤ November 12: South Oakland Model Railroad Open House (10-4), Hazel Park, MI, http://socmrrc.org/ ➤ November – December: Detroit Model RR Club, Holly, MI, Open House Schedule: http://www.dmrcc.org/ ➤ Nov. 25 – 26 & Weekends in December: Stoney Creek Model RR Club will be operating the Club’s modular layout at the Rochester Hills Van Hoosen Museum. Rochester, MI 	<p>The November Clinic and Show & Tell will be a locomotive “beauty contest</p> <p>The contest entries can be in any scale and must be in operating condition. The entries can be in any of 5 categories:</p> <ol style="list-style-type: none"> 1. Streamlined steam 2. Non-streamlined steam 3. First generation “car body” diesel such as EMD F-3, F-7, Alco FA, PA, etc. 4. General purposed hood unit or switcher 5. Electric including interurban and street car. <p>One entry per member.</p>
Division 8 Board of Directors	
<p>Superintendent: Phil Doolittle doolittlep@comcast.net</p> <p>Treasurer: Paul Runyan prrdi61@gmail.com</p> <p>Secretary: Bill Gawthrop wegawthrop@aol.com</p> <p>Director: John Gavasso John Jackson jdsmjackson@sbcglobal.net</p>	

Car House Editor: Bill Gawthrop

