

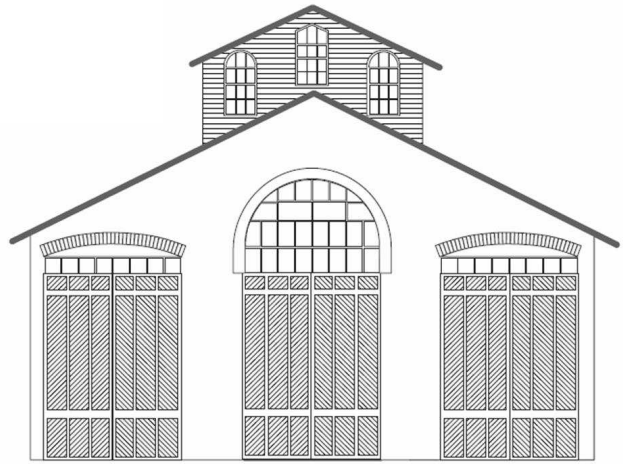
# CAR HOUSE



Website:  
<http://div8.ncr-nmra.org>



Website:  
<http://www.nmra.org/>



## THE NEWS

NOVEMBER 21, 2013

### Model of the Fourth Quarter 2013

Troy, MI:



We continue with the theme - models of the Quarter in 2013 featuring a scene. The fourth quarter of 2013 Model of the Quarter features **an industrial scene**.

Here are the rules:

1. The scene may be in any scale.
2. The scene must be transportable to the meeting. In other words the judges must be able to judge the scene in person.
3. The minimum size for the scene is:
  - 3.1. 6" x 6" in N or smaller scale
  - 3.2. 12" x 12" in HO scale
  - 3.3. 18" x 18" in S or O scale
  - 3.4. 24" x 24" for scales larger than O
4. The scene must contain:
  - 4.1. "Vegetation" in the form of ground cover and may also include bushes, trees, "water," etc.
  - 4.2. An industrial building or buildings.

*Continued in next column*

### Next North Central Region Convention Coming up sooner than you think!

April 25-27, 2014



### Register Now!

[http://www.divisiononencr.com/Convention/Toledo\\_2014.html](http://www.divisiononencr.com/Convention/Toledo_2014.html)

### *Model of the Quarter Continued*

- 1.1. A railroad track or tracks fully ballasted and weathered.
2. Elements in the scene may be either built from scratch, kit-built, or kit-bashed.

**Judging of entries will be conducted at the upcoming December 19<sup>th</sup> meeting.**

**CAR HOUSE**

November 21, 2013

*THE NEWS***Convention Award Winners**

Troy, MI: This year's convention had a total of 65 entries in the contests. The entries were divided almost equally between models and photos. Several of the entries in the model contest were evaluated with over 100 points out of a total possible number of 125 points. In the model contest, the winners in each category were:

Best of Show: Dan Lewis; Milwaukee water tower

Structures: 1<sup>st</sup>: David Zolnieriek; Gallows turntable

2<sup>nd</sup>: Marv Linke; cattle stock pens  
3<sup>rd</sup>: Dave Capron; Howligan's &

Skinner's town

Other structures earning achievement awards (87.5 points+)

Howard Andrews;

company houses

David Zolnieriek;

Rainbow restaurant

Roland Bunting; Brimley

depot

Motive Power: 1<sup>st</sup>: Brooks Stover; B&O EL-3 steam locomotive

2<sup>nd</sup>: Skip Lyuk; 3truck shay

Traction: 1<sup>st</sup>: John Wright; Third Avenue RR trolley

*Continued from previous page*

2<sup>nd</sup>: Roger Jensen; GE Box Cab

Non-revenue: 1<sup>st</sup>: Brooks Stover; Clark type G-3 side dump car

2<sup>nd</sup>: Skip Luyk; Logging firefighting car

In addition to the usual model judging, this year's contest included modules. There were three entries:

1<sup>st</sup>: John Wright; Ocean Parkway underpass

2<sup>nd</sup>: Howard Andrews; City

module loop

3<sup>rd</sup>: Bill Gawthrop; Perry,

**Convention News**

Troy, MI: An addendum to the Convention news reported last month:

**Dave Katona** is shown here [left] accepting the grand prize (HO Scale GP-20) from Bill Gawthrop.



Also, **Dan Lewis** accepts the best of show prize and people's choice award from John Jackson for his N scale Milwaukee Road water tower respectively.



**CAR HOUSE**

November 21, 2013

*THE NEWS*

## Michigan

In the photo contest, the winners in each category were:

Best in Show: Brooks Stover; Ready Track

B&W print: 1<sup>st</sup>: Dan Lewis; Extra 96-C  
2<sup>nd</sup>: Dan Lewis; Window View at Harlowton

Model Color Print: 1<sup>st</sup>: Brooks Stover; Winter coal drag

2<sup>nd</sup>: Brooks Stover; Summer Night in Dundon

3<sup>rd</sup>: Brooks Stover; Switching Rich Run Mine

Prototype-B&W print: 1<sup>st</sup>: Dan Lewis; The 482

2<sup>nd</sup>: Dan Lewis; At the Silverton Engine House

Prototype-color print: 1<sup>st</sup>: Rick Ware; Indiana RR #3803 with remote control car

2<sup>nd</sup>: Brooks Stover; Autumn Steam (Climax #3, Durbin, WV)

3<sup>rd</sup>: Brooks Stover; Almost Home

**Assistance Needed**

A 92 year old friend of Paul Runyan and his wife are no longer able to remain in their home. The family is putting the home up for sale and would like to find a home for their father's N-Scale layout.

The layout is 4' 8" wide by 13' 5" long and has scenery completed on approximately 60% of it. Track work is complete except for some minor changes in process that he was unable to finish. Most turnouts are by Peco.

The layout is controlled by an Atlas Master Commander DCC system. This is an earlier DCC system that I am not personally familiar with.

There are also numerous cars and locomotives still in boxes along with other kits and many parts and scenery materials.

A photo of the layout shows some of what is available. If you are interested, please contact Paul Runyan at [prrdi61@sbcglobal.net](mailto:prrdi61@sbcglobal.net) or call him at (248) 476-4854.



# CAR HOUSE

November 21, 2013

## Show & Tell This Month's Theme was a Flea Market or Your Current Favorite Project

**Steve Akers** offered a scratch-built bar and depot in HO scale. The structures are completely detailed inside and out and include lighting.



**Phil Doolittle** displayed HO scale signals which he intends to install on his Wheatland Jct. Free-mo module. The signals are both cantilevered and dwarf types.



**Dave Thornton** brought in an Atlas O scale gondola car for which he made a load of steel coils



### Snapshots from the Flea Market "Floor"





# CAR HOUSE

November 21, 2013



Please forward any and all erratta to Bill Gawthrop, Car House editor at [wegawthrop@aol.com](mailto:wegawthrop@aol.com). Virtual tomatoes are also welcome..... it's part of our quality improvement.....

Upcoming Events	December Clinic
<ul style="list-style-type: none"> <li>➤ <b>Dec. 14-15; Jan. 11-12 &amp; 25-26:</b> Detroit Model Railroad Club Open House, Holly, MI</li> <li>➤ <b>Dec. 15:</b> Wolverine Train Club Show, United Food &amp; Commercial Workers Hall, 876 Horace Brown Drive Madison Heights, MI</li> <li>➤ <b>Dec. 29:</b> Monroe Model Train Show, Monroe County Fairground, Monroe, MI</li> <li>➤ <b>Jan. 12:</b> 2014 Lansing Train Show &amp; Sale, MSU Pavilion, E. Lansing, MI</li> </ul>	<p>The December clinic will be our annual slide show. Display our 5 favorite railorad and / or model railroad slides.</p> <p>If your ‘slides’ are in a digital format such as jpeg images, please email these images to Dan Lewis at least 2 weeks before the December 21<sup>st</sup> meeting.</p> <p>If you are bringing your 5 favorite 35mm slides, please let Dan Lewis know so that he can provide a slide projector for the meeting.</p>
Division 8 Board of Directors	Next Meeting’s Show and Tell
<p>Superintendent: John Jackson  <a href="mailto:jdsmjackson@sbcglobal.net">jdsmjackson@sbcglobal.net</a></p> <p>Treasurer: Paul Runyan  <a href="mailto:prrdi61@sbcglobal.net">prrdi61@sbcglobal.net</a></p> <p>Secretary: Bill Gawthrop  <a href="mailto:wegawthrop@aol.com">wegawthrop@aol.com</a></p> <p>Director: John Gavasso</p> <p>Director: Jerry Shanek  <a href="mailto:Jerry_shanek@yahoo.com">Jerry_shanek@yahoo.com</a></p>	<p>Show and Tell and Clinic are combined for the December meeting. However, you may bring your current favorite project and tell about it at the meeting.</p>