

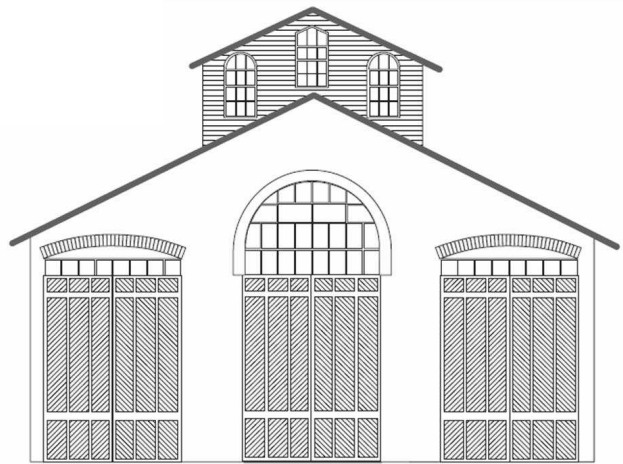
# CAR HOUSE



Website:  
<http://div8.ncr-nmra.org>



Website:  
<http://www.nmra.org/>



## THE NEWS

JANUARY 17, 2013

### Donations

Troy, MI: The Division 8 members with approval of the Board of Directors present voted to make a donation to the California Railroad Museum in the name of Irv Schultz. You may recall that Irv's layout was donated to the Museum and will be used in part as a portion of the Museum's model railroad display.

The amount of this donation is \$250.

Division 8 members are encouraged to also make a pledge toward the construction of the layout.

### Convention News

Troy, MI: The 2013 NMRA-NCR\_2013 Convention Committee continues its planning efforts.

- ◆ Registration form and pricing have been decided except for the cost of the awards breakfast.
- ◆ The Convention website <http://www.ncr2013.ncr-nmra.org/> has been updated.

### News from National

Troy, MI: Dave Thornton reports that an e-NMRA magazine rollout is planned for July. As a sad note, Dave reports that NMRA membership has dropped by 1,000 over the past year.

### Model of the First Quarter 2013

Troy, MI:  
 Models of the Quarter in 2013 will feature scenery each with an additional requirement. For the first quarter of 2013 this feature will be people.



Here are the rules:

1. The scene may be in any scale.
2. The scene must be transportable to the meeting. In other words the judges must be able to judge the scene in person at the March 2013 meeting.
3. The minimum size for the scene is:
  - 3.1. 6" x 6" in N or smaller scale
  - 3.2. 12" x 12" in HO scale
  - 3.3. 18" x 18" in S or O scale
  - 3.4. 24" x 24" for scales larger than O
4. The scene must contain:
  - 4.1. "Vegetation" in the form of ground cover and may also include bushes, trees, "water," etc.
  - 4.2. People (at least two) appropriate to the scale being portrayed in the scene.
5. A structure, off-line or on-line.
6. Elements in the scene may be either built from scratch, kit-built, or kit-bashed.
7. There is no restriction on rolling stock should it appear in the scene.

**Entries will be judged at the March 2013 Division 8 meeting.**

# CAR HOUSE

January 17, 2013

## THE NEWS

### Upcoming Elections

Troy, MI: Election of officers will be held in March, Nominations will be made at the February 2013 meeting of Division 8. Please note that at the December meeting of the Board of Directors, the term-limit requirement has been waived for this election.

### Tonight's Guest

Troy, MI: Eric Turner is tonight's guest. He is from Grosse Pointe and models in HO scale.

## Show & Tell

The topic for this Month's Show and Tell Your Holiday Present

**Jim Dennis** brought in an HO scale Divco truck decorated for the Twin Pines Dairy (made by American Heritage Models) a familiar vehicle to Detroit area folks. Jim also brought in a book on Divco Trucks.



**Phil Doolittle** offered his HO scale Kingston Creamery, which he is building from a South River Modelworks kit. Phil reports that this model will be used on his Free-Mo module, Wheatland Junction. Phil has constructed the model so as to make it more transportable and more robust.



**Ron King** displayed a Union Pacific DDA-40X in HO scale by Athearn. Ron received this model as a gift from a friend of over 50 years. This model represents one of the prototype's 47 units built between 1969 and 1971.

The model has DCC and sound.



**Paul Runyan** received 2012 Hallmark Christmas Ornaments including a 4-4-0 locomotive, tender, and combine.



**John Gavasso** received a Hallmark Keepsake ornament of a Lionel "Nutcracker Route" locomotive.



**Ken Scherer** received a Lionel Christmas Train by Hallmark and a Chessie steam locomotive and passenger car.



# CAR HOUSE

January 17, 2013

**Larry Wolohon** received an O scale NYC USRA hopper and an O scale PRR, H31 hopper for Christmas.



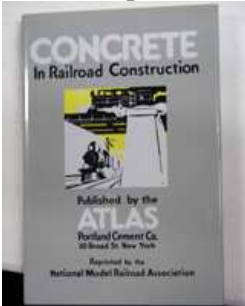
**Joel Goldberg** brought in an article that he wrote for the GN "Goat" magazine on triangular ties, Somers, Montana.

Sorry  
No Image  
Available

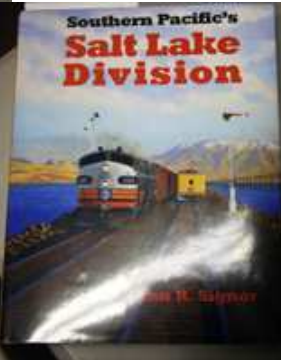
**Mark Mincek** received a framed photo from a local photographer. Mark is not certain of the location of the photograph.



**John Jackson** received a book on using concrete in construction. The book is republished by the NMRA.



**Walt Connell** received a C&O GP-9 in HO scale and a book entitled Salt Lake Division as Christmas presents.



**Bill Gawthrop** received an HO scale B&O light Pacific from Santa. The model by Broadway Limited represents an as-received USRA Pacific which became one of 30 B&O class P-5 4-6-2's. B&O replaced the smoke-box mounted headlight with a top-mounted Pyle headlight (as you can see in the photo of the prototype.)



**Gene Kome** received an HO scale Alco S-2 switcher decorated for the Santa Fe for Christmas. The model is by Bachmann.



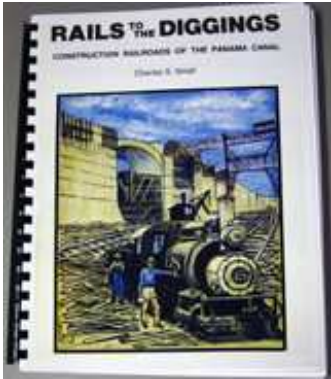
**Dave Thornton** received two Lionel box cars for Christmas. Dave converted these detailed cars to 2-rail.



# CAR HOUSE

January 17, 2013

**Rick Ware** received a book by Charles S. Small, "Rails to the Diggings" describing construction railroads of the Panama Canal.



**Bob Scherer** received several Christmas gifts including:

- ◆ An HO scale PH&D box car
- ◆ Great Model Railroads DVD 2013
- ◆ Book: How to Kitbash Structures
- ◆ Book: Railroad Depots of Michigan
- ◆ RIX HO scale telephone poles.



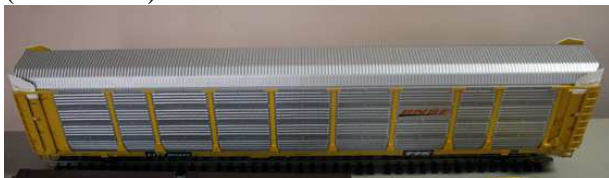
**Jim Zinser** brought in his Christmas present, an HO scale Divco truck decorated for the Twin Pines Dairy. The model is a product of American Heritage Models.



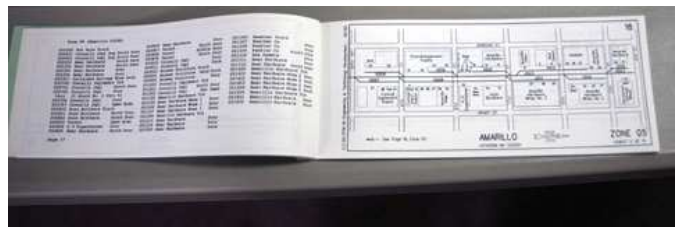
**Tim Fisher** received an ATSF "Quick Book" as a Christmas gift. Information in the book provides train crews with additional information about their respective routes, industries served, and other right-of-way data.



**Jerry Shanek** received a "G" scale autorack (1/29<sup>th</sup> scale) for Christmas.



Jerry brought along a couple of automobiles for the autorack as well.



# CAR HOUSE

January 17, 2013

**I have photos of additional items for which I did not receive a "Show & Tell" data sheet. I will be glad to include appropriate data if the owners would let me know the particulars.**



Please forward any and all erratta to Bill Gawthrop, Car House editor at [wegawthrop@aol.com](mailto:wegawthrop@aol.com). Virtual tomatoes are also welcome..... it's part of our quality improvement.....

## This Month's Clinic

Rad Jones spoke on Operations on the his MIO [N scale} model railroad. Rad described the operating scheme he uses based on Conrail practices.



### Upcoming Events

- Feb. 9-10; Feb. 23-24; Mar. 9-10: Detroit Model Railroad Club Open House, Holly, MI
- Feb. 16-17: Ann Arbor MRCC Train Show, Saline, MI
- Feb. 24: Lapeer Train Show, Lapeer, MI
- Mar. 3: Gratiot Valley Train Show & Sale, Warren, MI
- Mar. 10: RR Memorabilia & Model Train Show, Taylor, MI
- Mar. 17: Trainorama, Farmington Hills, MI

### February Clinic

Jim Zinser and Larry Wolohon will present a review of the NMRA Achievement Program

### Division 8 Board of Directors

Superintendent: John Jackson  
[jdsmjackson@sbcglobal.net](mailto:jdsmjackson@sbcglobal.net)  
 Treasurer: Paul Runyan  
[prdi61@sbcglobal.net](mailto:prdi61@sbcglobal.net)  
 Secretary: Bill Gawthrop  
[wegawthrop@aol.com](mailto:wegawthrop@aol.com)  
 Director: Saul Kalbfeld  
[fjgbus@gmail.com](mailto:fjgbus@gmail.com)  
 Director: Jerry Shanek  
[Jerry\\_shanek@yahoo.com](mailto:Jerry_shanek@yahoo.com)

### Next Meeting's Show and Tell

Your "BEST" model or your current favorite project.