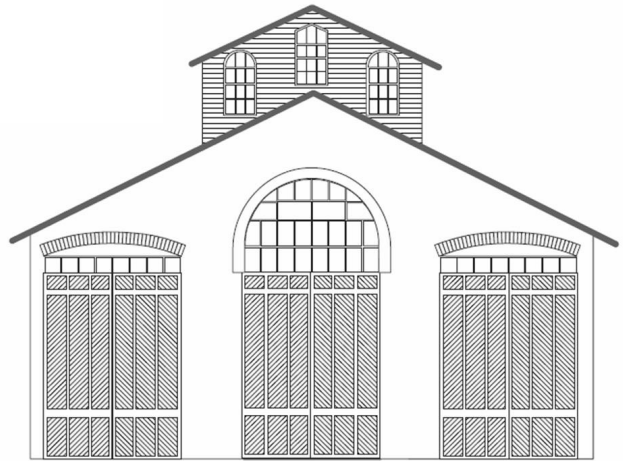


# CAR HOUSE



Website:  
<http://div8.ncr-nmra.org>

Website:  
<http://www.nmra.org/>



## The News

February 16, 2012

### News from National

- Troy, MI: Dave Thornton reports that:
- Financially, the NMRA had a good year in 2011. The Convention and National Train Show made a profit.
  - Modelers in Mainland China have requested that they become affiliated with the NMRA. A memo of understanding has been drawn up.
  - Pursuit of a cruise as the 2015 NMRA convention has been dropped.
  - The British and the Australians have both expressed an interest in holding the 2016 Convention.

### Recruiting

Troy, MI: Marv Linke will head up the recruiting booth at the Gratiot Valley Train Show & Sale on March 4. Marv welcomes people to assist him at the booth.

### New Treasurer/Paymaster

Troy, MI: Gen Kome has resigned and Paul Runyan picks up his unexpired term as treasurer/paymaster of Division 8.

### Model of the First Quarter 2012

Troy, MI: A reminder that the model of the first quarter of 2012 will be to build a trestle.

#### Rules:

1. Trestle model
  - a. Can be built in any scale
  - b. Can be built using any materials
  - c. Must represent a real prototype (made from steel, iron, or wood)
2. Trestle model may be:
  - a. Scratchbuilt

or

  - b. Built from a “craftsman” kit

or

  - c. Kitbashed
3. Minimum details required:
  - a. Model must be painted
  - b. Contain track appropriate to the scale modeled
  - c. Be operational, i.e. suitable for installation on a layout and subsequent “use” by trains.

**Models will be judged at the March, 2012 meeting.**

# CAR HOUSE

February 16, 2012

### The 5th annual Michiana Model Railroad Symposium

Elkhart, Indiana: The 5th annual Michiana Model Railroad Symposium will be held Friday and Saturday April 13th and 14th at the National New York Central Railroad Museum in Elkhart, Indiana. The museum is alongside the former NYC mainline to Chicago where upwards of a hundred trains pass by ever day. More than enough trains to satisfy even the most demanding railfans among us!

The symposium consists of clinics, hands-on workshops, and guest presentations all put on by some of our hobby's best and most well known modelers. The symposium is one of the best events anywhere for learning to improve your model railroading skills, get motivated, meet great modelers, and see the large model display. Bring your models to place in the model display. The more the better!

### 2012 Election

**As members of the NMRA you are urged to vote!** The 2012 election ballot is included as an insert in the February 2012 issue of NMRA Magazine. Along with the ballot are biosketches of each of the candidate and instructions for voting.

### Guest

Troy, MI: Tonight's guest is Greg Woodcheck (sp?)

### Car House Errata

Jim Zinser noted that the reported AS16's that He and Walt Connell received for Christmas were actually Baldwin AS616's



## Show & Tell

### Refrigerator Car or your favorite current project

**Jim Clements** brought in an HO<sub>n3</sub> refrigerator car decorated for the Colorado & Southern. Jim built the car from a kit many years ago,



**Jim Zinser** offered 2 refrigerator cars in HO scale.

- Union Transit / Soo Line built from an Intermountain kit
- An HO scale express refer decorated for Hood's Milk. This brass car is an Iron Horse Miniatures (Precision Scale) product.



**John Gavasso** brought in an HO scale 50' REA (#344) express refer which he built from a Model Die Casting kit.



**Walt Connell** brought in an HO scale refer decorated for the 2010 NMRA Convention.

**Sorry  
No Image  
Available**

# CAR HOUSE

February 16, 2012

**Terry Bossick** offered a mechanical Road Railer refrigerator trailer in HO scale.



**Paul Runyan** brought in an HO scale Kahn's (reporting marks EKSX 1099) refrigerator car, a product of Atlas.

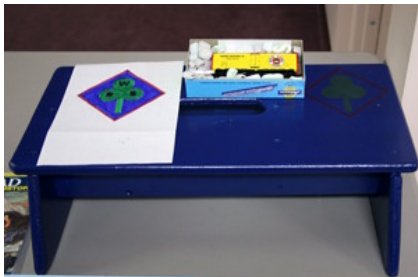


**John Jackson** displayed:

- John's new logo for his railroad
- A 50' Goebels Brewing Co. refer in HO scale from Greenway Products.
- A porter's stool made from plans out of Model Railroader with John's new logo for his railroad.

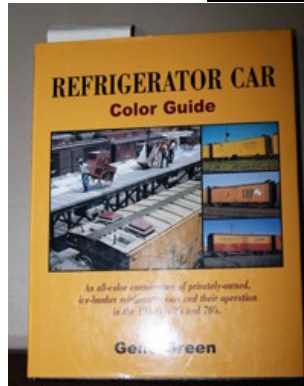


**Dave Thornton** brought in an O scale refer decorated for the Western Fruit Express.



**Vince Robinson** brought in 4 refrigerator cars plus another refer which is a work in progress. Unfortunately, the photos that I took did not turn out for these beautiful models.

**Larry Wolohon** brought in a O scale R40-10 PFE refer and a book Color Guide to Refrigerator Cars.



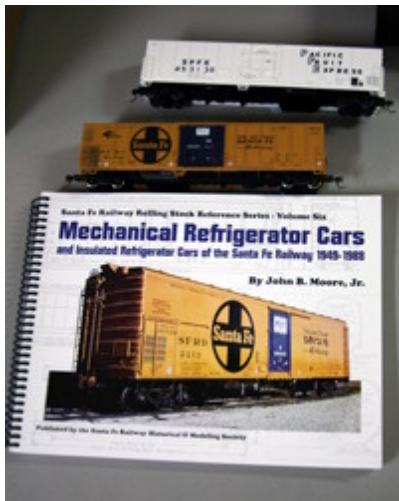
**Bill Gawthrop** offered an HO scale refer decorated for Merchants Dispatch Transportation Company. Bill built this car from a Binkley kit in the early 1960's.



# CAR HOUSE

February 16, 2012

**Gene Kome** displayed two 57' mechanical temperature controlled cars in HO scale. One car is decorated for the Santa Fe while the other is decorated for Pacific Fruit Express. Gene also displayed a book by the Santa Fe Historical Society on MTC cars.



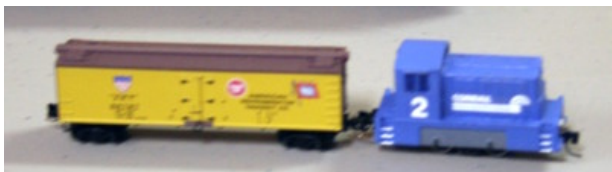
**Phil Doolittle** brought in one unit of his [HO scale] Free-Mo module known as Wheatland Junction. This unit is called Bailey's Boats and Bait. Nice detail!



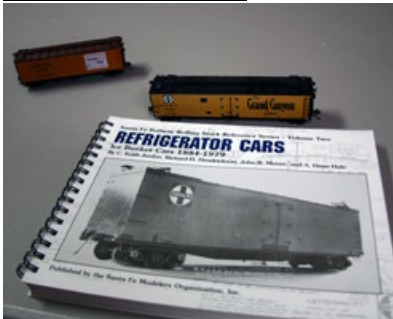
**Joel Goldberg** brought in an HO scale stock car which he built from an Ambroid kit. Joel used this car as one of his candidates for his Master Builder Cars AP certificate.



**Thomas Pelle** brought in an engine and refrigerator car in Z scale. The engine is powered and contains a DCC decoder!



**Tim Fisher** brought in a Santa Fe refer and book, Santa Fe Iced Refers.



**Jack Watson** brought in a MERX refer in HO scale.

**Sorry  
No Image  
Available**

**Mark Mincek** brought in a 50' HO scale refrigerator car decorated for Santa Fe.

**Sorry  
No Image  
Available**

# CAR HOUSE

February 16, 2012

**Ed Black** offered a refer in On3 scale. Ed built this car in the past.



**Jerry Shanek** offered 4 refrigerator cars in G scale. The cars are products of Aristo Craft.



My apologies to those whose models did not appear in the Show & Tell section. I photographed these models but didn't realize until afterward that the light meter was malfunctioning on my camera.  
**Bill Gawthrop**

Please forward any and all erratta to Bill Gawthrop, Car House editor at [wegawthrop@aol.com](mailto:wegawthrop@aol.com). Virtual tomatoes are also welcome..... it's part of our quality improvement.....

## This Month's Clinic

This month's clinic was "A Day at The Shops" {in the early 1950's} a DVD about building refrigerator cars by the Merchants Dispatch Transportation Company.

### Upcoming Events

- **Feb. 25-26, Mar. 10-11:** Detroit Model Railroad Open House, Holly, MI. [www.dmrrc.org](http://www.dmrrc.org).
- **Mar. 11:** Ray Nikolai's Railroad Memorabilia Show and Model Train Show, Taylor Town Trade Center, Taylor, MI, [wayne@societynscalers.com](mailto:wayne@societynscalers.com)
- **Mar. 18:** TRAINORAMA., Redford Model RR Club, Costick Comm. Center, Farmington Hills.

### March Clinic

The clinic for March is "The Challenges of Modeling in S Scale" by Brooks Stover.

### Division 8 Board of Directors

Superintendent: John Jackson  
[jdsmjackson@sbcglobal.net](mailto:jdsmjackson@sbcglobal.net)  
 Treasurer: Paul Runyan  
[prrdi61@sbcglobal.net](mailto:prrdi61@sbcglobal.net)  
 Secretary: Bill Gawthrop  
[wegawthrop@aol.com](mailto:wegawthrop@aol.com)  
 Director: Saul Kalbfeld  
[fjgbus@gmail.com](mailto:fjgbus@gmail.com)  
 Director: Jerry Shanek  
[Jerry\\_shanek@yahoo.com](mailto:Jerry_shanek@yahoo.com)

### Next Meeting's Show and Tell

Anything S Scale *or* Depots *or* your favorite current project.