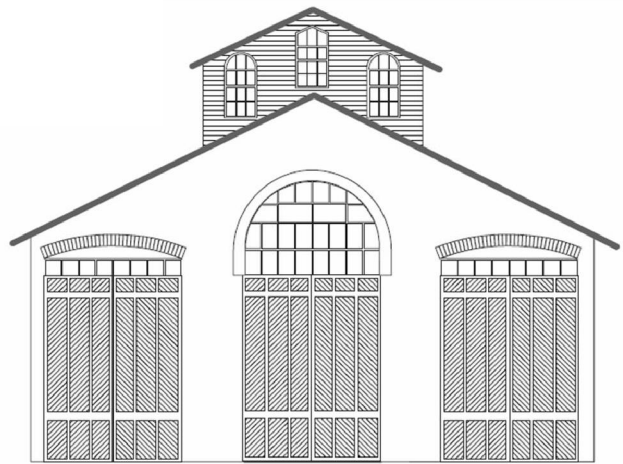


# CAR HOUSE



Website:  
<http://div8.ncr-nmra.org>

Website:  
<http://www.nmra.org/>



## The News

February 19, 2015

### Model of the Quarter

Troy, MI: The theme for the **Models of the Quarter in 2015** is an off-line structure. The subject for the **Model of the First Quarter in 2015** is any off-line structure.

This off-line structure can be any structure otherwise not directly served by a railroad.

The rules are as follows:

1. The structure cannot start from a ready-to-run model.
2. The structure model may be built in any scale.
3. The model can be either
  - 3.1. Scratch-built *OR*
  - 3.2. Kit-built *OR*
  - 3.3. Kit-bashed
4. The model must be painted.
5. Please note that the NMRA states that vehicles are included in the "structures" category.

Examples:



Entrants will be judged at the March 2015 meeting of Division 8.

### Membership Committee Report

Troy, MI: Ken Scherer reports that there was a lot of interest expressed in the NMRA by people who "checked in" at the membership booth at the "A-Train" train show in Auburn Hills. Ken gave out 20 NMRA rail passes plus all of the magazine copies that he had.

### Hint: Removing Printed Lettering

Troy, MI: Dave Thornton reports that a Microsol-soaked tissue applied over top printed lettering that you want to remove does the job. No stains, no residue, no scratches.

### Division 8 Elections Coming Up

Troy, MI: John Jackson announced that the Board of Directors is looking for a Division 8 member to head the nominating committee for upcoming elections.

### Guest

Troy, MI: Don Hansen is a guest at tonight's meeting. He models in N scale and is a member of the Society of N Scalers.

### National NMRA

Troy, MI: Dave Thornton reports that the mid-year meeting of the NMRA Board of Directors will be held in Phoenix on February 21<sup>st</sup>.

# CAR HOUSE

February 19, 2014

**Division 8 Layout Spring Tours**  
 Troy, MI: Phil Doolittle reports that Division 8 layout tours will resume in April. Details will be forth coming.

## Show & Tell

### This Month's Theme Was Winter Scene / Equipment Used in Winter

**Jay Chunderlick** offered a beautiful Ashland Oil Co. gas station in HO scale. This model represents Jay's first attempt at model building! Some talent here!! Jay is planning to build a layout after he retires in 2016.



**Larry Wolohon** displayed a CN snow plow in O scale plus a book "Snow Plow Clearing Mountain Rails"



**Phil Doolittle** brought in an HO scale snow plow. He built the model over 40 years starting with an Ambroid kit(?)



**Marv Linke** offered two narrow gauge flangers (On3 and HOn3). Both are D&RGW prototypes of the late 1800's. The prototypes had wooden frames and the flangers were air operated.



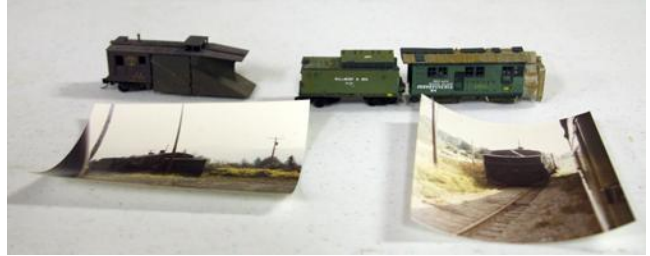
# CAR HOUSE

February 19, 2014

**Rick Ware** offered two conifer trees with snow from Christmas Village manufacturers.



**Rad Jones** brought in an N scale rotary snow plow and Jordan Spreader. He also brought in photos from Skokomish, WA taken in the 1970's of snow removal.



**David Katona** displayed photos of a layout he built at age 14. He said he experimented with several track schemes and when done dumped several boxes of plaster on it to represent snow.



**Thierry Cach** offered 1940 era maps of the Pennsylvania RR Toledo and Grand Rapids Divisions. Both areas witnessed lots of snow.



**Gene Kome** brought in an HO scale Russell snow plow. The model is a Walthers product.



**John Gavasso** displayed a Santa Fe 2-8-2. This brass model awaits its time on John's work bench.



**Ron King** brought in a Western Maryland super-detailed 2-8-0 in HO scale. He developed his model from a Bachmann product.



**Greg Rich** displayed an HO scale 2-6-6-0 which he modeled following a D&SL loco. He scratchbuilt & kitbashed the model using parts from Mantua, a can motor, and TCS WOW sound decoder.

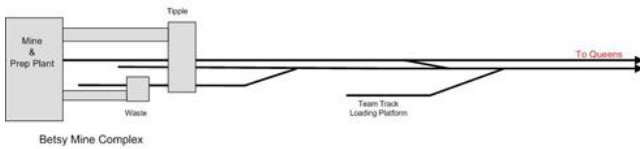


# CAR HOUSE

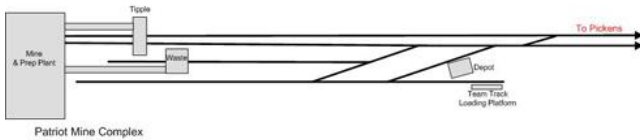
February 19, 2014

**Bill Gawthrop** offered his current project, addition of 60 feet of mainline and two new mines to his Coal & Coke HO scale Railroad. Track plans are displayed below as well as graphics depicting the future scenes.

Evergreen (Upper Level)



Erbacon (Lower Level)



**John Jackson** displayed a SW1500 decorated for the Southern Railway. This HO scale model is by Broadway Limited. The model includes DCC and sound.



The foam on the running boards represents snow?

**Dave Thornton** brought in a B&O Jordan Spreader in O scale. He modified this spreader from an MTH product.

**Sorry  
No Image  
Available**

**Jim Zinser** displayed a photo of his layout. This view is of the South Shore Junction on his Copper Valley Railway. Here the Duluth, South Shore & Atlantic interchanges with the CVR at this point on the mainline A branch line and the DSS&A come together. This location also contains Trackage of the Wilson Lumber Company and the narrow gauge tracks of the ore-hauling Torch Lake Railroad.



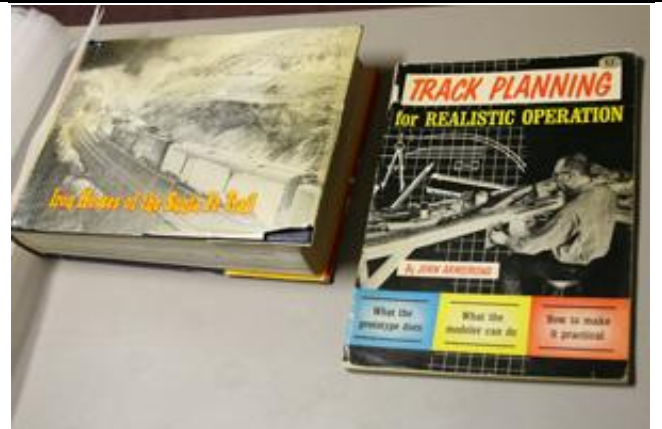
This is Jim's latest project.

# CAR HOUSE

February 19, 2014

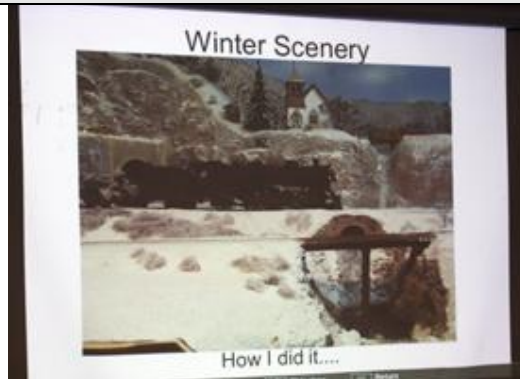
**Tim Fisher** brought in his current project and topic for next month's clinic including:

- A book, Iron Horses of the Santa Fe Trail by Harley. This book is a catalog of all steam engines of the Santa Fe by wheel arrangement, class, and build date. Also included are diesels prior to 1960.
- Track Planning for Realistic Operation by John Armstrong, a classic model railroad planning book.



## February Clinic

George VanDuyne presented his techniques in modeling winter scenery. He revealed his secret recipe for “snow” and its application over the various forms of terrain and structures on his layout.



## Upcoming Events

- **Mar. 7 & 8 and 21 & 22:** Detroit Model Railroad Club open house, Holly, MI, [www.dmrcc.org](http://www.dmrcc.org)
- **Mar. 15:** Trainorama, Redford Model Train Club, Costick Activity Center, Farmington Hills, MI. [www.redfordmodeltrainclub.com](http://www.redfordmodeltrainclub.com)

## March Clinic

Tim Fisher will present a clinic on how he was influenced and what he did to create his HO scale Cimarron & Santa Fe based on the prototype Atchison, Topeka and Santa Fe Railway.

## Division 8 Board of Directors

Superintendent: John Jackson  
[jdsmjackson@sbcglobal.net](mailto:jdsmjackson@sbcglobal.net)  
 Treasurer: Paul Runyan  
[prrdi61@sbcglobal.net](mailto:prrdi61@sbcglobal.net)  
 Secretary: Bill Gawthrop  
[wegawthrop@aol.com](mailto:wegawthrop@aol.com)  
 Director: John Gavasso

## Next Meeting's Show and Tell

The topic for Show & Tell for March will be something from your favorite railroad or your current favorite project.