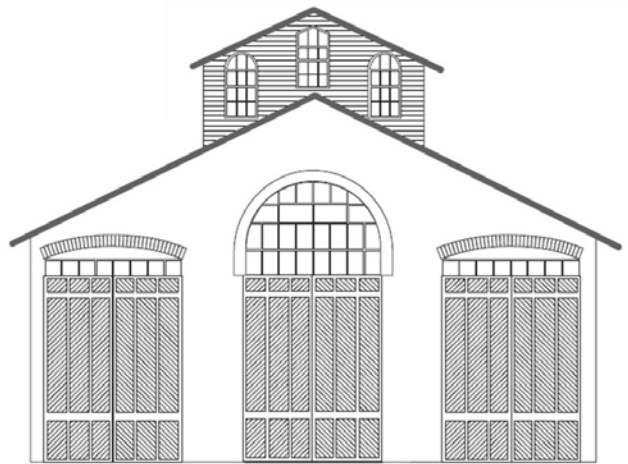


CAR HOUSE



Website:
<http://div8.ncr-nmra.org>

Website:
<http://www.nmra.org/>



THE NEWS

MARCH 21, 2013

Moore Achieves Chief Dispatcher

Troy, MI: Bill Moore (left) accepts his certificate of achievement for Chief Dispatcher from Larry Wolohon. Congratulations Bill!



The Winner!

Troy, MI: Four entries were submitted for the First quarter 2013 Model of the Quarter. And the winner is Marv Linke for his beautiful cattle loading facility in N scale. Congratulations Marv!



The contest entries:



CAR HOUSE

March 21, 2013

THE NEWS

The contest entries continued

Model of the Second Quarter 2013

Troy, MI:



We continue with the theme - models of the Quarter in 2013 featuring a scene. The first quarter's contest featured people in a scene. The second quarter of 2013 Model of the Quarter will feature **water**.

Here are the rules:

1. The scene may be in any scale.
2. The scene must be transportable to the meeting. In other words the judges must be able to judge the scene in person.
3. The minimum size for the scene is:
 - 3.1. 6" x 6" in N or smaller scale
 - 3.2. 12" x 12" in HO scale
 - 3.3. 18" x 18" in S or O scale
 - 3.4. 24" x 24" for scales larger than O

Election Results

Troy, MI: No opposition was heard from the members in attendance at tonight's meeting. So, by member acclamation the following candidates will take office on April 18, 2013:

- ◆ John Jackson for Superintendent
- ◆ Bill Gawthrop for Dispatcher/Secretary
- ◆ Paul Runyan for Paymaster/Treasurer
- ◆ John Gavasso for Director

Jerry Shanek continues his term as Director.

Layout Tip from Phil Doolittle

Troy, MI: The Doubleheaders Model Railroad Club is holding its annual self-guided home and club model railroad layout tour Saturday, April 6th. This tour covers the area of Kitchener, Waterloo, Cambridge and Guelph in Ontario.

There are usually more than 40 layouts available for tour, some of which are outstanding. I've gone twice. I'm not going this year, but will again in the future. The tour costs \$6.00 Canadian. I'd suggest going the night before so you can get an early start visiting layouts. The tickets and maps are obtained at Hespeler Arena, 640 Ellis Road, Cambridge, Ontario, starting at 9:00 am.

Complete information and layout photos are at www.doubleheaders.org/.

CAR HOUSE

March 21, 2013

THE NEWS***Model of the Second Quarter Rules Continued***

4. The scene **must** contain:
 - 4.1. "Water" real or simulated such as a lake, stream, or river. Add a waterfall if you like
 - 4.2. Believable terrain and "vegetation." must abut or surrounded the "water"
 - 4.3. A structure, off-line or on-line.
 - 4.4. A railroad track
5. The scene **may** contain a bridge(s), people, animals, vehicle(s), signs, and/or rolling stock
6. Elements in the scene may be either built from scratch, kit-built, or kit-bashed.
7. There are **no** restrictions on rolling stock should it appear in the scene.

Entries will be judged at the June 2013 Division 8 meeting.

Convention News

Troy, MI: Newsy items from the 2013 NCR Convention Committee include:

1. Planning for the layout tour is in high gear. Phil Doolittle reports that he is obtaining commitments from layout owners to have their layouts included in the tour. AND, there are still opportunities to register your layout for the tour.
2. Bill Gawthrop is seeking those who would like to advertise their "private road" in a pike advertisement in the Convention Program. Your artwork and \$10 are all that are required.
3. The Convention website content is growing. Give it a click: www.ncr2013.ncr-nmra.org.

Contribution to the Magic of Model Railroading

Troy, MI: Jim Zinser brought in a pledge card form intended for people to pledge money to the "Magic of Scale Model Railroading" an exhibit planned for the NMRA Museum at the California Railroad Museum.

A copy of this form is being included in the mailing of the March *Car House*. It is hoped that Division 8 members will find a portion of their model railroad budget which they can pledge. A member may either mail their pledge directly to NMRA and note that the pledge should be acknowledged coming from a member of NCR-Division 8, **OR** members can bring their pledges to Paul Runyan who will accumulate pledges and mail them to NMRA National HQ.

News From National

Indianapolis, IN has been chosen to host the 2016 NMRA National Convention. The convention will be held Jul 3 -10 in the downtown area.

Errata from the January Car House

Troy, MI: The Show & Tell subject brought in by Dan Mitzel was omitted from the February issue. The subject is included in this month's Show & Tell section.

Guest

Troy, MI: Tonight's guest is Malcolm Sutherland.

CAR HOUSE

March 21, 2013

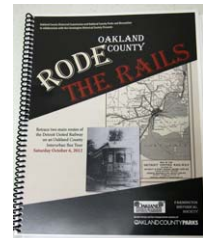
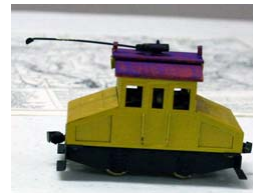
Show & Tell

The topic for this Month's Show and Tell is anything Great Northern or Electric Locomotive or Your Current Favorite Project

Dan Mitzel brought in research materials that he is using to plan a new layout.



George Anderson offered an HO scale KTM Katsumi small industrial locomotive. George also offered a Great Northern Route Map and an Oakland County Traction Tour booklet



Phil Doolittle brought in a city water tower in HO scale. He scratch-built the tower except for the use of RIX Products silo parts for the tank and commercial cargo ladder. The tower will be used on Phil's "Wheatland junction" Free-Mo module.



Tim Fisher offered an article from a 1959 Model Railroader. The article entitle "The Interurban in Its Natural Habitat" featured interurbans in O scale that



The next issue of the magazine had a photo of the entire set-up.

George Van Duyne displayed results of image enhancement software. The software was developed as a project at the University of Texas. One of the features of the software is to "fix" noise in digital images.



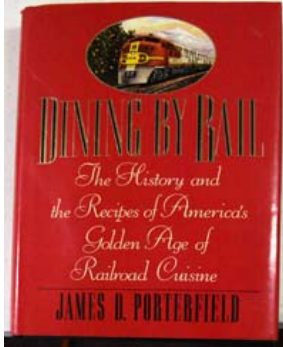
Ken Scherer displayed a 40 foot box car in HO scale. He built this model from an Athearn kit.



CAR HOUSE

March 21, 2013

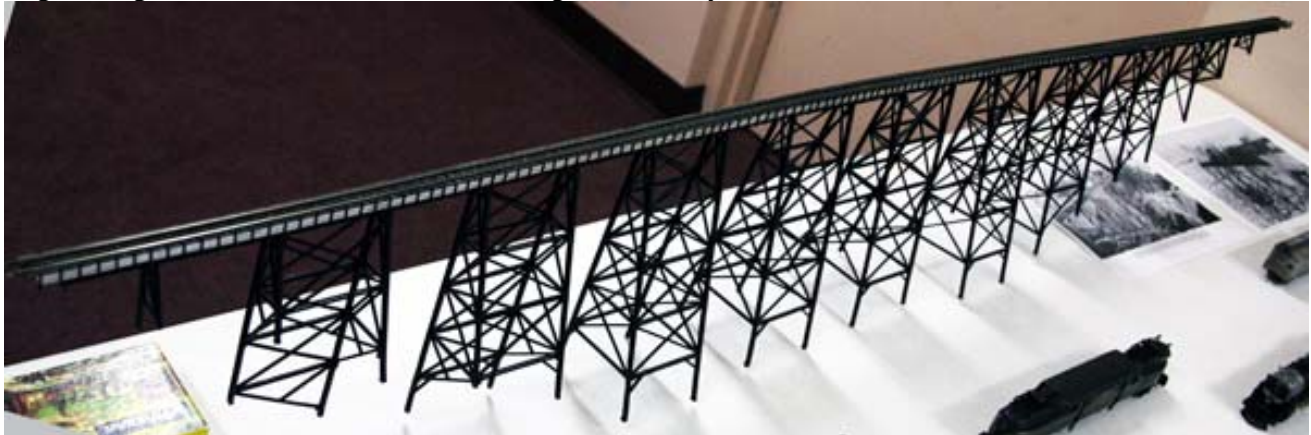
Doug Kass offered publications for the railroad enthusiast, including “Dining by Rail,” “Railway Cuisine,” and “History of Dining by Rail.”



Joel Goldberg presented photos of a pair of Canadian National natural gas-powered locomotives.



Dan Lewis displayed a steel trestle in N scale. He kitbashed the trestle from kits offered by Micro Engineering. Dan added other details including the walkway.



The prototype was on the Milwaukee Road’s North Montana Line Spring Creek Coulee. His model is 700 feet long. The prototype was 1,300 feet long.

Fred Cosgrove brought in an HO scale Chicago South Shore & South Bend GE “Little Joe.” The locomotive is a product of MTH and has DCC and sound, operating pantographs and couplers.



Terry Bossick offered “Park Terrace Railway” an estate train to carry supplies on along narrow lot.



The small layout was suggested by Carl Arendt on small layouts website. This was also Terry’s entry in the Model of the Quarter.

CAR HOUSE

March 21, 2013

John Jackson continues to build his cement plant in HO scale. He has focused his latest efforts on building a structure to house a rotary kiln. The structure is a scale 115 feet tall. John used foam core as the material for the structure's walls.



Rick Ware brought in a Great Northern 2-bay covered hopper. Rick built this HO scale car from an undecorated kit by Eastern Car Works. He painted it and decorated it for the "Big Sky Blue" paint scheme.



Bill Gawthrop continues his weathering projects. This time he weathered an HO scale B&O Class I-12, wagon-top caboose in "pool service" livery. He applied heavy weathering to the underbody and trucks and light weathering on the rest of the car.

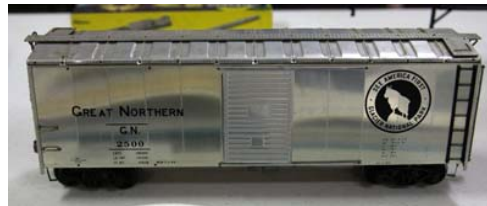


The car is a product of Orient Limited.

Ron King offered 2 mechanical refers in HO scale. He built the models from Varney kits. He removed the ice hatches and added fuel tanks and new roof walks. He also added Atlas Bettendorf trucks and Kadee couplers.



Larry Wolohon displayed a Great Northern aluminum box car and a Great Northern Truss-Rod Box Car. Both models are in O scale.



Gene Kome brought in a refrigerated box car that he built from an Athearn kit and a cylindrical cover hopper, a model by IRC. Both models are lettered for Great Northern and both are in HO scale.



Paul Runyan brought in a Pennsy GG-1 in HO scale. This model is by Broadway Limited. It's one of Broadway's earlier models and the first locomotive for Paul with sound.



CAR HOUSE

March 21, 2013

Jim Zinser displayed a 40' box car and covered hopper in HO scale. Both models are decorated for Great Northern.



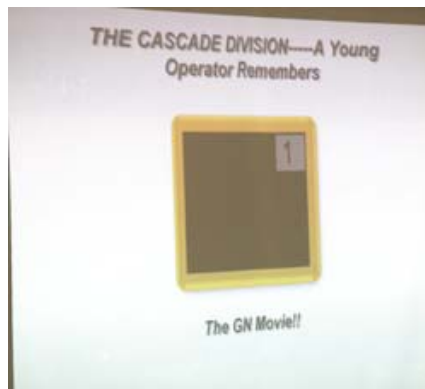
John Gavasso brought in a Great Northern #2552, Class S-1 4-8-4 in HO scale.



Please forward any and all errata to Bill Gawthrop, Car House editor at wegawthrop@aol.com. Virtual tomatoes are also welcome..... it's part of our quality improvement.....

This Month's Clinic

This month's clinic featured a "movie" on the Great Northern's Cascade Division.



Upcoming Events

- **Apr. 28:** Monroe Model Train Show, MBT Expo Ctr., Fairgrounds, Monroe, MI
- **May 10:** Durand Railroad Days, Durand, MI, www.durandunionstation.org

April Clinic

Contest Judging by Joel Goldberg.

Division 8 Board of Directors

Superintendent: John Jackson
jdsmjackson@sbcglobal.net
 Treasurer: Paul Runyan
prrdi61@sbcglobal.net
 Secretary: Bill Gawthrop
wegawthrop@aol.com
 Director: John Gavasso
 Director: Jerry Shanek
Jerry_shanek@yahoo.com

Next Meeting's Show and Tell

The model that you would like to build (bring plans, photos, description) OR your current favorite project.