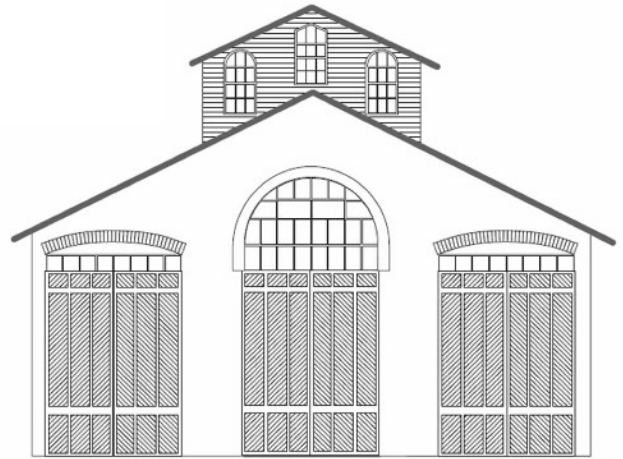


CAR HOUSE

MARCH, 2020



Website:
<http://div8.ncr-nmra.org>
or
clintonriverdivision.ncr-nmra.org



Website:
<http://www.nmra.org/>

CORONA-VIRUS, SELF-ISOLATION, QUARANTINES

The National crisis, self-isolations, stay-in-place orders and quarantines kept us away from one another in March. From the posts and photos on social media, that did not stop many of us from spending time at the work bench, in the railroad room or under the layout - building, operating, wiring, completing benchwork, planning, or just dreaming about model railroading. All good stuff - keep modeling, stay safe and healthy! Check the Clinton River Division website (see above) for updates, when we can meet and other activities.

FROM THE SUPER – MARCH 2020

Well, sorry we didn't have a March meeting. I wanted to hear what Jim Baker had to say about DCC. Hopefully we can get him back to deliver his clinic once we are back to business as normal. At this point, we are all waiting for the "all clear" and until we have it there is no knowing whether there will be an April meeting.

In the meantime, we all have an opportunity to make model railroad progress. Instead of the March Show and Tell, this issue of Car House includes photos of projects some of us are working on at home. Whether you submitted your project photos or not, I hope you are able to enjoy some quality model railroad time. I've been working on some craftsman kits and getting a real start on benchwork for my developing home layout. And reading. I'm in the middle of a long novel, but I am also trying to keep up with the model railroad press.

While I read model railroad magazines, I often use the "stuffer" cards and envelopes found between the pages as book marks. Recently one of these subscription stuffers had a message that caught my attention. It said "Subscribe to the magazine that model railroaders TRUST!"

Whoa! Wait a minute, I subscribe to and read just about all the (not scale specific) mainstream model railroad publications. I regularly read Model Railroader, Railroad Model Craftsman, NMRA Magazine, Narrow Gauge and Short Line Gazette, Canadian Rail Modeler and The Hotbox. Occasionally, I read Model Railroad Hobbist. Never did it occur to me that one of them was publishing “untrustworthy” information.

I find all of these magazines interesting, inspirational, and informative. I will admit that some of them cover the same things over and over, but that keeps this old mind reminded of whatever they are talking about. So enjoy reading your model railroad magazines. That’s one of the “Low Risk Activities” to do while we wait out COVID-19. Here are some others, borrowed with modification from one of my wife’s crafter FaceBook posts.

- Model Railroading
- Think about Model Railroading
- Buying Model Railroad supplies online
- Organizing your Model Railroading supplies
- Staring at your Model Railroading supplies
- Posting photos of your Model Railroading online

I’m sure you can think of more. Be safe and get things done!

Phil Doolittle, Superintendent

SECURITY ISSUES AT THE CHURCH

Unfortunately an unauthorized person was discovered in the Troy Christian Chapel after the January Division meeting. While nothing was missing or vandalized, we all must take extra precautions to protect the church property and all who use the building. Thus, **a member of the Division will monitor the parking lot door until our meeting begins at 7:00 pm. Then the door will be locked and a sign posted with the cell phone number of one of our members.** If you arrive after the door is locked, please call the cell phone listed for entry. This small inconvenience will provide safety for all. Please volunteer to be a monitor for one meeting, on a rotating basis. Thanks to **John Kline**, who will monitor the door for the next meeting.

Who wants to be a Webmaster?

George Van Duyn has been Clinton River Division’s webmaster for several years, keeping us up-to-date with Division happenings and the recent convention information. Thanks for the dedication, George. He is ready to pass the mouse to an IT geek. The position comes with training from George. Contact George or one of the Division officers for more information.

Guests are always welcome at Clinton River Division meetings. Because of National Model Railroad Association insurance regulations, guests are limited to three visits, then must join the NMRA to continue to participate in Division activities.

CLINTON RIVER DIVISION has an additional link to our webpage. **<http://clintonriverdivision.ncr-nmra.org>** - both links (see Page 1) lead you to the website.

T-TRACK MODULES

The January Car House included the attachment of Division 6 - The Motor City Division - Standards for a HO Scale T-Track Module. Several Division 6 members have committed to building modules and a number of Clinton River Division members have expressed interest. Perhaps the two divisions could combine efforts to display modules at a convention or at shows. It seems like a simple project, even if your primary scale is not HO. (Your editor is considering his first foray into the "large" HO scale!)

Please give serious thought to what you can build - it's a perfect project for a "new" modeler or one who has little or no room for a layout. Try out some scenery techniques or kit bash a building or two. It could a great group endeavor, or a school, church or scout venture - a wonderful way to involve youth and new people in the hobby.

Each T-Track module is 18" x 19.5" (4 - 18" 1x3) with 1/2" thick plywood or OSB 18" x 8" minimum, 4 - 9" pieces Bachman straight EZ track, and 15" x 18" masonite backdrop. It is hard to make it simpler! If you did not save the standards and instructions, please email the editor (chappie81@wowway.com) for another copy. The photo is a module completed by Barry Hensel of Division 6.



NMRA NCR Extra 2020 - Kalamazoo, MI

Division 9 is hosting a Special One Day Model Railroad Convention, Saturday, April 25, 2020, at the River Facility, 517 Walbridge, downtown Kalamazoo, with plenty of free parking. The day starts with registration at 7:30 am, with clinics through noon. The afternoon is filled with layout tours throughout Southwest Michigan. Registration is \$25. For information, contact Rich Mahaney, 269-214-4221, hazmatrichm@aol.com *As of this writing, March 25, we have not been notified of cancellation.*

Jerry Shanek traveled to Montreal in February, and visited Acton Vale, a small town about an hour east of Montreal. Acton Vale has a unique railroad station, picturesque with two feet of snow. (Did not have the photo last month)



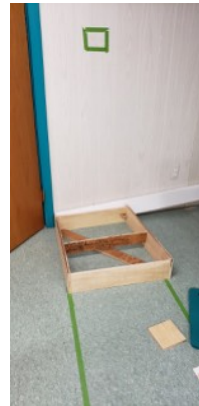
MARCH SHOW & TELL

Theme: Virtual Show and Tell: Current Projects during Self-Isolation

Dan Schilt, new to Clinton River Division, but experienced NMRA member from Atlanta shares photos of his former layout. Great waterfront scene - Boblo, anyone? **Dan** also relates that his former Piedmont Division in Atlanta cancelled their annual show which attracted 10,000 visitors and netted them \$20,000. Hope they can recover and reschedule.



Phil Doolittle is building benchwork and a FOS Scale kit Forley & Company, a shallow background industry.



This structure will mount to the wall just under the green tape rectangle (future hole) and will be the benchwork where the end of my Free-mo module will join, thus making a route to staging. Tape on the floor located the module



Dan Warmus was ready to display these models and more at the March meeting. the Red Wood Empire Route kit is a 1940's Athearn black box kit of metal and wood construction. The Varney F unit (repainted to PennCentral) is a 1947 kit, eight wheel drive, rear trucks connect to the motor via 2 o-rings and a flex shaft aft to fore truck set. This loco is all die-cast and weighs in at 23.9 oz. It held the record at the model railroad club that once resided above the Birmingham train station and pulled 79 + cars. I may have the quantity pulled wrong but this loco pulled them. The boxcar is metal and wood. (continued on Page 5)

Dan Warmus (continued from Page 4). Dan also recommends "Run Like a Dream: Loco Book" from Model Railroad Hobbyist by Joe Fugate. Available for purchase from mrhmag.com which is a great free-of-charge online magazine. (The editor receives no endorsement compensation for this ad!)



John Jackson is busy constructing the "downtown" of Tuxedo Junction, named after the Big Band era song.



Chris Litsair from Stoney Creek Club and Saginaw River Valley Club is assisting his friend Travis Von Grey build benchwork for a 1500 square foot layout. We want to see how this construction progresses!



Bruce DeYoung, MMR, is building a Campbell Oil Derrick Kit from 1963. Bruce found it on E-Bay. His goal is to create a scene on his logging railroad set in Pennsylvania. The decking is done, the tower is built, and I'm happy to say that the long ladder is finally done.



Richard Kubeck passes along information about a couple of websites that may be of interest to all:

- www.roometteslighting.com -sells folding rooms to put behind those empty windows on structures, can be found on YouTube under "roomettes."
- www.ModelTrainTechnology.com -offers lighting control which can be used with Woodland Scenics Just Plug - works with DDC also. YouTube under "model train technology."

Rich Mahaney, NCR Director-at-Large, was prowling DownRiver and in Toledo for prototype shots that you can use in modeling. First is Jones Chemical in Riverview. The chlorine tank cars are unloaded at the plant for re-distribution to customers. Notice the tail track (end of line) so locomotive can push the tank cars into the industry. A simple scene to model.



Second, **Rich** sent this cool photo of a switch engine inside the Nabisco flour plant along the Maumee River in Toledo.



Third, **Rich** found this abandoned station in the Toledo area. Reminiscent of a small town station of long ago. Thanks for the photos and modeling ideas, **Rich**.



NORTH CENTRAL REGION - NCR 2020 - BLACK SWAMP JUNCTION October 15-18, 2020

- Hosted by the Black Swamp Division in Toledo
- Radisson Hotel at the University of Toledo
- Rail Marine activities
- Early Bird Registration \$55 by 9/1/2020
- www.divisiononencr.com/2020

Join our Toledo friends and the rest of the North Central Region for a fun weekend of model railroading in October. Registration information is online.

UPCOMING EVENTS - if and when circumstances allow

APRIL 2020 CLINIC
**“TIPS & TRICKS FOR
STRUCTURES”**
by Bruce DeYoung, MMR

APRIL 2020 SHOW & TELL
STRUCTURES
or
CURRENT PROJECTS
from your self-isolation.

We hope April activities will happen - Check the website for updates

<http://clintonriverdivision.ncr-nmra.org>

- ★ April 16 - Clinton River Division 8 Monthly Meeting, 7:00 pm
Troy Christian Chapel
- ★ April 18 - All Day OP SESSION at Detroit Model Railroad Club in
Holly, contact www.dmrrc.org or 248-634-5811
- ★ April 25 - NMRA NCR Extra 2020 - Kalamazoo, MI (See Page 3)

CLINTON RIVER DIVISION 8 BOARD OF DIRECTORS

Superintendent: Phil Doolittle - doolittlep@comcast.net

Treasurer: Paul Runyan - prrdi61@gmail.com

Secretary: Kent Aughe - chappie81@wowway.com

Directors: John Gavasso
John Jackson - jdsmjackson@wowway.com

Car House Editor: Kent Aughe

Car House Proof-reader: Barbara Aughe

THE APRIL MEETING - WE HOPE!
THURSDAY, April 16, 2020, 7:00 p.m.
TROY CHRISTIAN CHAPEL,

**Second Floor Meeting Room (use parking lot door and stairway just inside the
door. There is also an elevator in the lobby if you prefer)**

400 E. Long Lake Road, Troy

SEE YOU THERE!

(Same place, same time, third Thursday, every month)

