

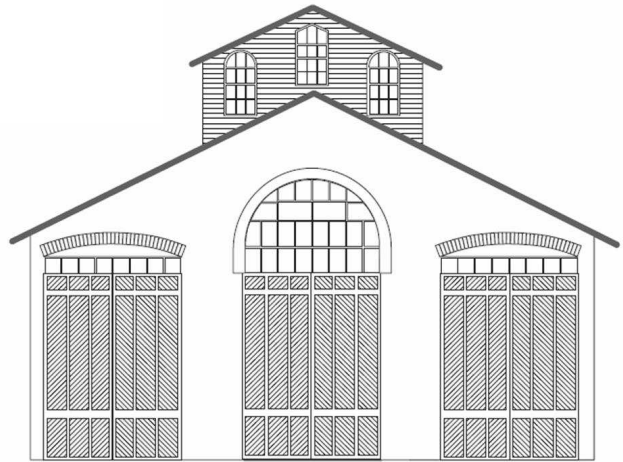
CAR HOUSE



Website:
<http://div8.ncr-nmra.org>



Website:
<http://www.nmra.org/>



THE NEWS

APRIL 18, 2013

Model of the Second Quarter 2013

Troy, MI:



We continue with the theme - models of the Quarter in 2013 featuring a scene. The first quarter's contest featured people in a scene. The second quarter of 2013 Model of the Quarter will feature **water**.

Here are the rules:

1. The scene may be in any scale.
2. The scene must be transportable to the meeting. In other words the judges must be able to judge the scene in person.
3. The minimum size for the scene is:
 - 3.1. 6" x 6" in N or smaller scale
 - 3.2. 12" x 12" in HO scale
 - 3.3. 18" x 18" in S or O scale
 - 3.4. 24" x 24" for scales larger than O

Convention News

Troy, MI: Newsy items from the 2013 NCR Convention Committee include:

1. Layout tours: 14 layouts already confirmed for layout tours; more awaiting confirmation
2. Op Sessions: Layouts now confirmed for the week preceding the Convention. 275 operator slots available. Signup will soon be available via the Convention website
3. Clinics: 18 clinic slots per day
4. Convention DVD: A DVD has been published and is available for those organizations that would like one
5. Display Layouts: Eight layouts will be on display at the Convention venue
6. Bill Gawthrop is seeking those who would like to advertise their "private road" in a pike advertisement in the Convention Program. Your artwork and \$10 are all that are required.

The Convention website content is growing.

Give it a click: www.ncr2013.ncr-nmra.org

Contribution to the Magic of Model Railroading

Troy, MI: It is hoped that Division 8 members will find a portion of their model railroad budget which they can pledge to the Magic of Model Railroading exhibit at the California Railroad Museum..

A member may either mail their pledge directly to NMRA and note that the pledge should be

CAR HOUSE

April 18, 2013

THE NEWS

Model of the Second Quarter Rules Continued

4. The scene **must** contain:
 - 4.1. "Water" real or simulated such as a lake, stream, or river. Add a waterfall if you like
 - 4.2. Believable terrain and "vegetation." must abut or surrounded the "water"
 - 4.3. A structure, off-line or on-line.
 - 4.4. A railroad track
5. The scene **may** contain a bridge(s), people, animals, vehicle(s), signs, and/or rolling stock
6. Elements in the scene may be either built from scratch, kit-built, or kit-bashed.
7. There are **no** restrictions on rolling stock should it appear in the scene.

Entries will be judged at the **June 2013 Division 8 meeting.**

Magic of Model Railroading Continued

acknowledged coming from a member of NCR-Division 8, **OR** members can bring their pledges to Paul Runyan who will accumulate pledges and mail them to NMRA National HQ.

News From National

Troy, MI: National has now scanned 20,000 pictures into the online data base. These are searchable and available for purchase.

The initial goal of \$250,000 has been met for Phase I of the NMRA's exhibit at the California State Railroad Museum. This first phase of NMRA's effort is the first step toward the total goal of a national model railroad museum.

Show & Tell

The topic for this Month's Show and Tell is anything that you planned to build or Your Current Favorite Project

Jim Zinser brought in two fire trucks in HO scale. He built the models from Resin Unlimited kits (no longer in business). Jim added simulated rotating beacon lights on both trucks using red LEDs and circuits by Ngingeering.



Phil Doolittle displayed a mockup of a small layout room and potential 2-level layout designed from an article in *Model Railroader*.



CAR HOUSE

April 18, 2013

John Gavasso's model that he plans to build involves modifying a Roundhouse (MDC) locomotive for a Harriman Ten Wheeler to capture the essence of a Southern Pacific Loco #1102. The prototype pulled "Old 97" into glory on Sunday, September 23, 1903.



Terry Bossick offered a Paul Moore kit for an interurban trolley from 1972. The kit is of wood, metal and paper. At the time Terry paid \$11 for the kit.



Dan Lewis brought in a front elevation scale drawing of the Great Falls, MT station. This is one more of the major stations along the North Montana Line of the Milwaukee Road that Dan intends to build (in N scale).



Marv Linke displayed the plans and materials to build the diesel facility / maintenance building. The original is in Georgia. It is unique in that it has one side open making it easy to see the interior.



Tim Fisher offered a Tichy kit for a USRA single-sheathed box car modified for cement (hauling) service. Prototypes were owned by the D&H and B&O.



Ron King's current project includes the scratch-building of an HO scale Erie caboose. This is one of seven that Ron has built. Sides are milled brass (by Ron), the underbody is from an Athearn bay window caboose, NWSL wheel sets and Kadee couplers. The caboose has working marker lights with LEDs.



Fred Cosgrove offered a Gloor Craft model of a store and warehouse in O scale. Fred bought the kit about 20-



25 years ago when he was modeling in HO scale. He added extra features that the non-detailed kit lacked.

CAR HOUSE

April 18, 2013

Rick Ware brought in a blueprint for a standard freight depot. The drawing is undated (probably circa 1900). The C&O designed this station to accompany "Design No. 2."



Bill Gawthrop displayed plans he drew up from data supplied by Charlie Whipp of the Lapeer Interlocking tower. The tower stood at the crossing of the Grand Trunk Western's Port Huron-to-Flint main line and the New York Central's branch through Lapeer. Bill intends to build the tower in HO scale. The tower will have a detailed interior and be lighted.



Dave Thornton displayed a Rutland box car that he converted from Lionel 3-rail to O scale.



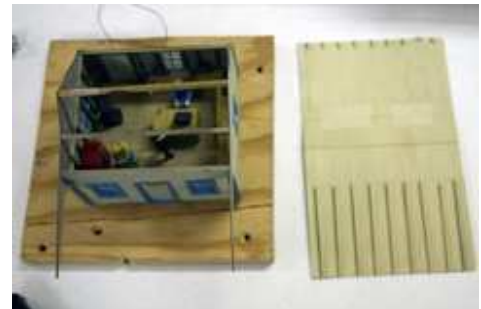
Phil Kenyon brought in a San Francisco cable car in 1/24 scale. The kits "wants" to be built, but it is still in the box.



Thomas Pelle brought in 3 passenger cars and 3 covered hoppers in Z scale.



Larry Wolohon brought in an O scale 1930's gas station that he built. The building features a completely detailed interior.



CAR HOUSE

April 18, 2013

Please forward any and all errata to Bill Gawthrop, Car House editor at wegawthrop@aol.com. Virtual tomatoes are also welcome..... it's part of our quality improvement.....

This Month's Clinic

This month's clinic featured contest judging by Joel Goldberg.

Joel reviewed the rules and gave practical guidelines for the various contest categories.

Upcoming Events

- **Apr. 28:** Monroe Model Train Show, MBT Expo Ctr., Fairgrounds, Monroe, MI
- **May 10:** Durand Railroad Days, Durand, MI, www.durandunionstation.org

April Clinic

Rad Jones and Dan Lewis will present a review of San Diego layouts.

Division 8 Board of Directors

Superintendent: John Jackson
jdsmjackson@sbcglobal.net
 Treasurer: Paul Runyan
prrdi61@sbcglobal.net
 Secretary: Bill Gawthrop
wegawthrop@aol.com
 Director: John Gavasso
 Director: Jerry Shanek
Jerry_shanek@yahoo.com

Next Meeting's Show and Tell

Your layout plans or your current favorite project.