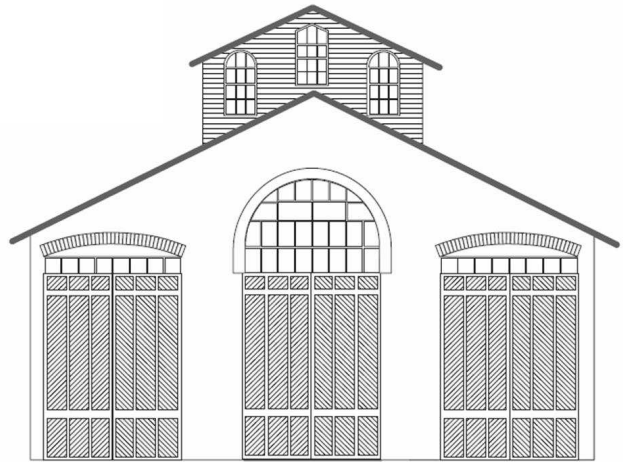


CAR HOUSE



Website:
<http://div8.ncr-nmra.org>

Website:
<http://www.nmra.org/>

THE NEWS

APRIL 17, 2014

Another Achiever

Troy, MI: Rad Jones on the right receives his Association Volunteer Achievement Program certificate from Larry Wolohon. Congratulations Rad!



Model of the Quarter

Troy, MI: The Model of the Second Quarter 2014 is a piece of maintenance of way rolling stock.

The rules are as follows:

1. The rolling stock cannot start from a ready-to-run model.
2. The maintenance of way model may be built in any scale.
3. The model can be either
 - 3.1. Scratch-built *OR*
 - 3.2. Kit-built *OR*
 - 3.3. Kit-bashed
4. The model must be painted and lettered

Judging of entries will be conducted at the June 19, 2014 meeting

Keepsakes?

Troy, MI: Dave Thornton [still] has some N box cars lettered for the Gibraltar Railroad. These models were offered at the 2007 NMRA Convention in Detroit. Only 4 are left! This may be your last chance to own a true keepsake from the memorable convention right in our own backyard!



Guest

Troy, MI: Philip Ruehl is our guest this evening. He models in HO scale and is developing a shelf layout.

Errata

Troy, MI: When I mentioned Brooks Stover's article in the April 2014 issue of the NMRA Magazine, I incorrectly identified Brooks Stover's B&O articulated as a Class EL-3a and not an EL-3. Indeed the model is of an EL-3. Sorry for the slip up.
Bill Gawthrop

CAR HOUSE

April 17, 2014

Show & Tell

This Month's Theme was Structures

Craig Haines brought in pedal cars in 1/2 inch scale. He built the models from scratch to go into a station mini-scene. Lots of parts per car!



Mark Mincek offered a fire station in HO scale. Mark built the model from a Magnusson kit many years ago; then, rebuilt it a few years ago. The water tank and doors are scratch-built.



Jim Zinser brought in scratch-built pump house. Jim built the HO scale model from drawings by Harry Brunk in Narrow Gauge & Shortline Gazette.



Terry Bossick converted an inexpensive barn with Grantline windows.



Phil Kenyon built a Z scale 2-story house.



CAR HOUSE

April 17, 2014

Rad Jones brought in the Heiss Skating Company building in N scale. Rad kit-bashed the building from various DPM kits. Rad painted and weathered the building with Polly Scale paint. He developed and printed signs on his computer. The business is named for his wife who is an Olympic skater.



Fred Cosgrove offered an O scale, scratch-built card-stock building “Motoligins”s. The structure is off of Fred’s former DSR trolley layout. The model was featured on the cover of “Traction Models” magazine, October 1970.



Larry Wolohon offered an O scale crossing shack. He built the model from a Bar Mills kit



Steve Weber’s current project is a wayside freight station. The model is in HO scale.



Rick Ware displayed the “Clifton Motor Company” which he built starting from a DPM kit. Rick built the model to enter in a contest at Rider’s Hobby Shop in Madison Heights (now long-gone). Rick scratch-built the shed, added details such as roof hatch, downspouts, water tank, etc.



CAR HOUSE

April 17, 2014

Steve Akers displayed a 2-stall [John Allen-design] engine house in HO scale. Steve also scratch-built a model of an old-time gas station.



Ron King displayed an HO scale water tank and tool shed. Ron built, painted and weathered the model he built from a kit by Fine Scale.



John Jackson brought in 300 painted figures in HO scale. John bought the figures from a vendor at the train show at the Novi Expo in January.



Dave Thornton offered a current project, an O scale flat car with 3 Massey Harris tractors. The flat car is a product of AHM with Athearn trucks, Intermountain wheels, and Kadee couplers. Dave added a brake wheel, grab irons and corner steps. Dave painted and lettered (w/decals) the model.



Bill Gawthrop brought in an HO scale GP40 decorated for Canadian Nation in the "Visual Design" paint scheme. In an effort to better represent the prototype, Bill started with a stock Atlas CN GP40 to which he:

- Removed the dual headlight above the cab windows,
- Added a bell where the headlight had been
- Modified the low hood by adding a dual headlight
- Added canopies above the walkways behind the cab.
- Weathered the locomotive.



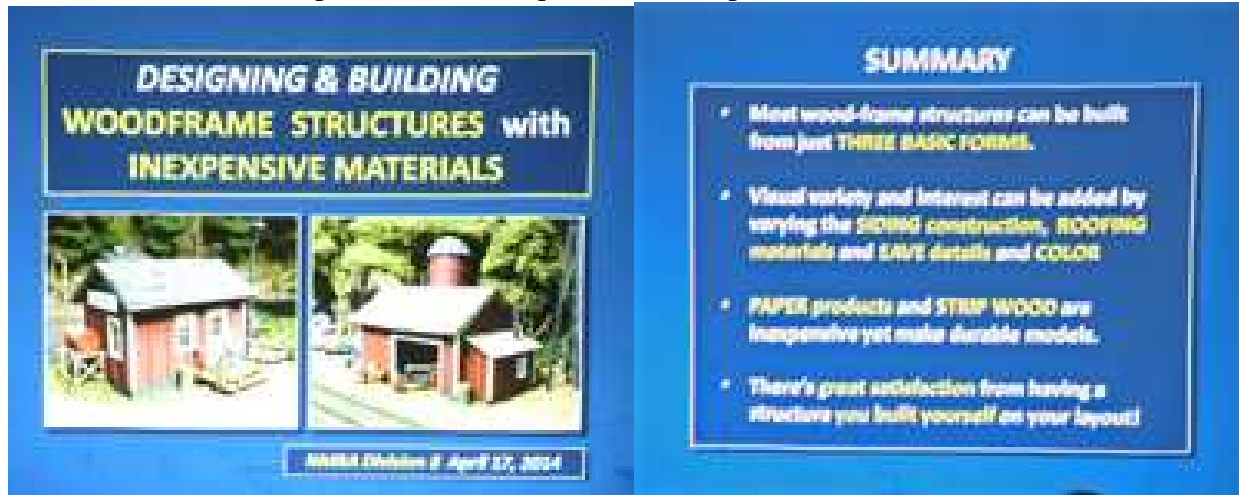
Please forward any and all errata to Bill Gawthrop, Car House editor at wegawthrop@aol.com. Virtual tomatoes are also welcome..... it's part of our quality improvement.....

CAR HOUSE

April 17, 2014

April Clinic

The April clinic was given by Brooks Stover. The topic was structures from inexpensive materials. Brooks described his experiences, techniques, and examples of his work in S scale.



Upcoming Events	April Clinic
<ul style="list-style-type: none"> ➤ May 3 & 4: Hobby-Rama, Gibraltar Trade Center, Mt. Clements, MI www.hobby-rama.com ➤ July 13-20: NMRA National Convention, Cleveland, OH, http://www.2014cleveland.org/ ➤ July 18-20: National Train Show, Cleveland, OH, http://www.nationaltrainshow.org/2014/cleveland.html 	<p>The clinic Big Steam, a DVD hosted by Larry Wolohon.</p>
Division 8 Board of Directors	Next Meeting's Show and Tell
<p>Superintendent: John Jackson jdsmjackson@sbcglobal.net</p> <p>Treasurer: Paul Runyan prrdi61@sbcglobal.net</p> <p>Secretary: Bill Gawthrop wegawthrop@aol.com</p> <p>Director: John Gavasso</p>	<p>Next month's show and tell theme is "big steam" or your current favorite project.</p>