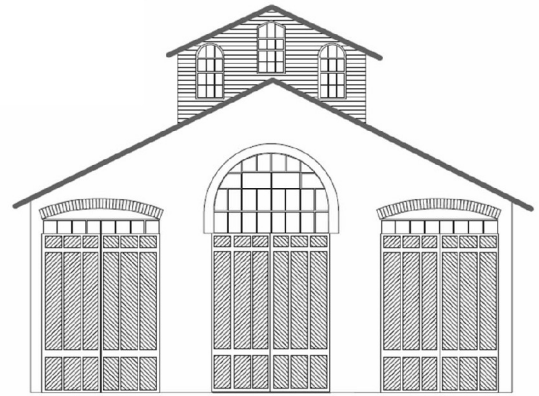


# THE CAR HOUSE

Monthly Newsletter of  
**Division 8** North Central Region  
National Model Railroad  
Association



Website: <http://div8.ncr-nmra.org>



May 20, 2010

## The News

### Another Big Turnout

Troy, MI: One more time, NCR-Division 8 members show their interest.



Over 40 folks participated in the May 20<sup>th</sup> meeting. Indeed, attendance has been over 40 people in every meeting in 2010.

### Another AP Certificate

Troy, MI: Larry Wolohon presents Saul Kalbfeld (right) with a certificate signifying that he has earned his Model Railroad Engineer – Electrical certificate. Congratulations Saul!



### Visitors

Troy, MI: Visitors at tonight's meeting included:

1. Tom Dart and friend Beatrice (from France). Tom is in the process of setting up Doug Tagsold's On3 DRG&W layout in an area above his indoor swimming pool.
2. Stewart Smith who models the Union Pacific in HO scale.

### News from National

Troy, MI: Dave Thornton reminded everyone at tonight's meeting that the NMRA is going to make a **special announcement** at the National Convention. What could it be?????

Dave also said that the **Diamond Club** has now raised \$60K of its targeted \$75K to digitize the NMRA archives. Any loose change will be greatly appreciated.

### Layout Tour / Open Houses

Troy, MI: Dan Lewis has organized a layout tour for Saturday, June 12. Stops on the tour will be at the Gratiot Valley Model Railroad in Mount Clemens and the Boston & Maine of Jack Watson. A map is being included with this mailing of the *Car House*.

### Lewis Retires

Troy, MI: Dan Lewis is retiring as layout tour / open house chairman after serving many years in that capacity. We thank Dan for his years of service and now look forward to someone stepping in to fill in Dan's big shoes.

**Volunteers ARE WELCOME PLEASE.**

May 20, 2010

### National Convention News

Troy, MI: Kerry Albrecht reports that over 1,000 people have signed up for the NMRA National Convention. 79 of those people are from Michigan and 29 are from Division 8.

### SHOW & TELL

Meeting participants presented a wide array of items during show and tell. The topic was any brass model railroad item. Of course, current projects were also fair game.

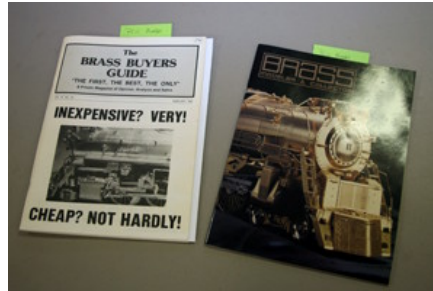
**Mark Mineck** offered a brass HO scale model of the Cleveland Union Terminal electric. These locomotives were used in Cleveland's "green" initiative enacted in 1930. The prototype used to take passenger trains from Collinwood yards while the steam locomotives remained in Collinwood. Mark grew up just a few miles from the location where these electrics were stationed.



**Bill Moore** brought in two magazines specialized in brass locomotives.

1 "The Brass Buyers Guide: The First, The Best, The Only A Private Magazine of Opinion, Analysis and Satire"

2 "Brass Modeler & Collector"



**Ed Black** brought in a beautifully scratchbuilt "carpenter's Gothic" farm house in HO scale. I call this house genuine "country." Ladies might call it "cute."



House & Chickens



Chickens!

Ed also brought in "chickens on a sprue."

I thought a first that these chickens were actually a scale TPed tree!

**Phil Doolittle** brought in an HO scale brass 0-6-0 by United entitled "Omaha" (I believe for the Canadian National).



Phil also offered a completed and painted B&O wagon-top box car which he built from an F&C resin kit. He brought in a kit of the same car but with different doors.



**Dick Dittus** brought in an On3 RGS Ten-Wheeler number 20. Per Dick, this is the first brass locomotive that he bought.



**Phil Kenyon** offered a brass signal bridge built at the Lansing convention a few years back.





May 20, 2010

**George Anderson** brought in a brass Mason Bogie in On3 scale. This locomotive is a product of Max Gray. The locomotive was custom painted and lettered depicting an engine in its as-built, fresh-from-the-factory condition.



**Bill Gawthrop** brought in the Last Class Saloon in HO scale. Bill is scratch-building this building (still needs rafters) for one of his Free-Mo modules. Bill used the sea-salt weathering technique to blister and peel the paint per clinic by Dan Lewis in January. The front door does have a BRASS door knob.



**Jim Zinser** offered the city block buildings and department store. The structures are kitbashed to allow a narrow fit into a shelf portion of Jim's layout. The city block is



detailed to represent businesses reflecting the interests of a young niece and nephews in Jim's family. The buildings are in HO scale.

**Larry Wolohon** brought in HO scale two brass models.  
1 A Chicago Burlington & Quincy Class R1, 2-6-2  
2 A Great Northern covered hopper for sand service.



**Ken Scherer** brought in an HO scale Alco DL600B in brass. The locomotive is lettered for the C&O.



**Terry Bossick** offered a brass subway car which he purchased from a Division 8 member some years ago at one of our meetings. Per Terry, all he can figure is that this model was intended for the lowest level of Larry Lauer's lower level line. This HO scale model has been painted for Terry's Detroit & Port Huron line.



**Rick Ware** offered a G scale rail and tie car. Rick purchased



this basic plastic flat car of unknown origin at a train show. Rick scratch-built the tie bin and blocking for the rails. Additional details are yet to be added. The car carried Code 332 BRASS rail.

**Peter Jacobson** offered an HO scale Southern Car and Foundry tank car that he is building from a resin kit.



May 20, 2010

**John Jackson** offered an HO scale Canadian National Class H6g 4-6-0. The locomotive is a product of VH Models crafted by Samhonsa. John purchased the locomotive from Train Center Hobbies in Birmingham back in 1995.



**Jack Liwo** brought in an HO scale CB&Q Hudson which he purchased in 1981. The locomotive is by Sunset and sports a can motor and a tender with speaker holes ready for a sound system.



**Fred Cosgrove** brought in two Chicago South Shore & South Bend RR brass interurbans, beautifully painted and lettered combines. The HO scale combine is a product of Nickel Plate Importers.



The O scale CSS&SB combine is from a Russ Brigg kit and built and painted by DUR member Warren Lewis.

**Bruce Fielder** offered an HO scale brass model of a Treadwell 80 ton hot metal car, a product of Overland. Bruce also presented a photo and description of the car in the 1951 Cyclopedia of the Steel Industry” by Watkins.



**John Kline** brought in a new DVD that included Mike Burgett's C&O layout. John also brought in a copy of the Fire Apparatus Journal that had an article on the C&O's Greenbrier, WV hotel fire department.



**Gene Kome** offered an HO scale brass Erie Class K5



heavy pacific. This is a 1941-era heavy pacific from Key Imports.

**Dan Lewis** showed an N scale Milwaukee Road rib-side caboose. The specially painted and lettered caboose is in brass.



**Dave Thornton** brought an O scale brass B&O wagon-topcaboose.



**No Name** but a beautiful outside-braced brass caboose decorated for the Illinois Central. The HO scale model is by Overland.

Perhaps I misplaced the Show & Tell submission sheet.





May 20, 2010

Thanks to all who participated in Show and Tell w.e.g

Please forward any and all erratta to Bill Gawthrop, Car House editor at [wegawthrop@aol.com](mailto:wegawthrop@aol.com). Virtual tomatoes are also welcome..... it's part of our quality improvement.....

### This Month's Clinic

This month's clinic was the Brass Model Business by George Kohs.



George explained his experiences over the past the conditions to develop and sell brass railraod models have cahnged dramatically.

1. The economy has been in a slump for the past 1 ½ years
2. Major Korean builders are no longer in business to sell brass railroad models
3. The brass model railroad building business is attempting to move to China with not much success.
4. The experience and knowledge base are not there (in China). Hence, the quality of models is not there either.

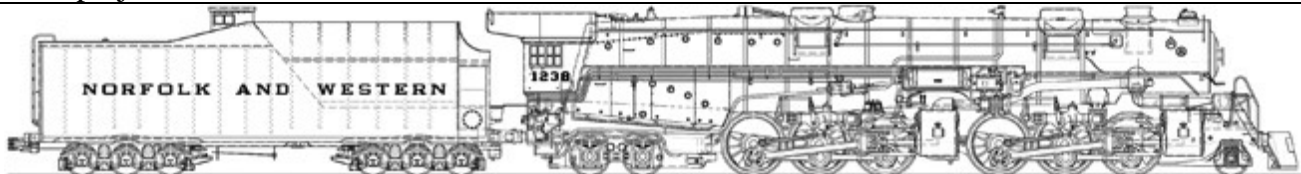
George is still personally supervising work of "his" Korean model builder. They are introducing one project per year on average. Each project is a brass locomotive,

passenger car or freight car in O scale.

Per George. they have been anticipating the production of the Class 'A' ever since we developed a profound admiration for the Norfolk & Western's engineering during the production of our Y6a and Y6b models. The Class 'A' is a natural progression for our Norfolk & Western series and it will not be the last addition to this series. Our Class 'A' will incorporate all of the features that Kohs & Company models have become known for and will offer the hobbyist/collector an exact 1:48 miniature replica of one of the finest prototype locomotives ever operated.

You can see George's products at his website:

<http://www.kohs.com/>



Upcoming Events	June Clinic
<p>1. <b>July 11 – 18:</b> NMRA National convention, Milwaukee</p>	<p>Larry Wolohon will present “Why You Should Model a Prototype which is not the Prototype of your Layout.”</p>
Division 8 Board of Directors	Next Meeting’s Show and Tell
<p>Superintendent: Jerry Shanek  <a href="mailto:Jerry_shanek@yahoo.com">Jerry_shanek@yahoo.com</a></p> <p>Secretary: Bill Gawthrop  <a href="mailto:wegawthrop@aol.com">wegawthrop@aol.com</a></p> <p>Treasurer: John Jackson  <a href="mailto:jdsmjackson@sbcglobal.net">jdsmjackson@sbcglobal.net</a></p> <p>Director: Saul Kalbfeld  <a href="mailto:fjgbus@comcast.net">fjgbus@comcast.net</a></p> <p>Director: Curt Danielewicz  <a href="mailto:CDanielewicz@ameritech.net">CDanielewicz@ameritech.net</a></p>	<p>The topic for next ( June17th ) meeting’s Show and Tell is:</p> <p>Anything prototype rolling stock including locomotives or structures that is not a prototype for your layout.</p> <p>The spirit of this theme is for participants to bring an item that would look foreign on their layout .</p> <p>Of course, you may bring in your prized current project as well.</p>