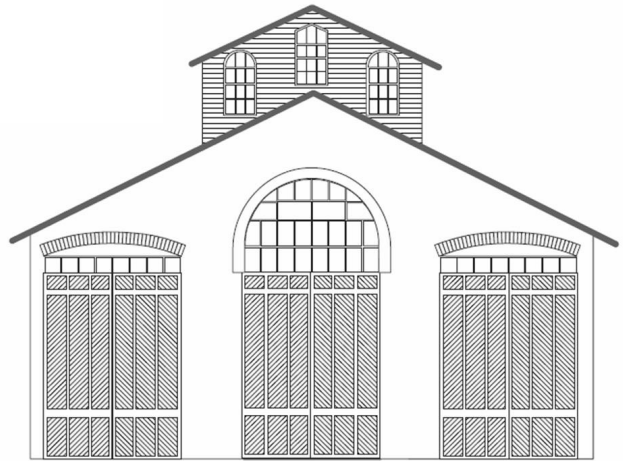


# CAR HOUSE



Website:  
<http://div8.ncr-nmra.org>

Website:  
<http://www.nmra.org/>



## The News

May 17, 2012

### Grand Rails Looking for Volunteers

Grand Rapids, MI: The Grand Rails Convention committee is still looking for a few good men and women to volunteer for various duties during the convention. Contact the committee via the website: [www.gr2012.org](http://www.gr2012.org).

Division 8 gets credit for its members volunteering for the convention.

### Meeting Guest

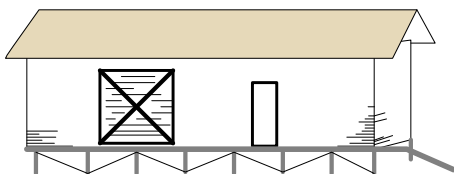
Troy, MI: Tonight's meeting guest is George Van Dyne.

### Thornton to Present to Troy Historical Society

Troy, MI: Dave Thornton will be presenting the history of model trains to the Troy Historical Society on August 23. This is an evening meeting (starts at 7:30) and Dave would like assistance from other Division 8 members. Contact Dave if you are interested.

### Model of the Second Quarter 2012.

Troy, MI: Don't forget that the Model of the Quarter Contest will be judged at the June 21<sup>st</sup> meeting.



### Gawthrop Receives AP Award

Troy, MI: Bill Gawthrop received his Master Builder, Scenery Achievement certificate from Larry Wolohon.

Bill earned his certificate featuring sections of his HO scale Coal & Coke Railroad.



### Thornton Re-Elected

Troy, MI: Dave Thornton has been re-elected to another term as NMRA Vice President, Administration. Congratulations Dave.

### King Divulges Contacts

Troy, MI: At the April meeting Ron King described his lighting techniques for his station platform. Ron promised (then) that he would bring the contact for the electronics firm where he purchased the LEDs. And, here's the contact: "strip LEDs" at [www.AllElectronics.com](http://www.AllElectronics.com).

# CAR HOUSE

May 17, 2012

## Show & Tell

### Figures of your favorite current project

**Phil Kenyon** brought in a Bachmann “Old Time Set” which included an N scale Jupiter and 5 cars.



**Phil Doolittle** offered brass models of the Union Pacific’s “119” and the Central Pacific’s Jupiter in HO scale. These models are products of Pacific Fast Mail.



**John Gavasso** brought in an HO scale Jupiter by Bachmann.



John’s engine is the one in the background.

**Ken Scherer** brought in a box car and two covered hopper cars lettered for SP and UP. The models are in HO scale.



**George Anderson** displayed a 40 foot boxcar that he built from a LaBelle kit.



**Fred Cosgrove** offered HO scale models of the “119” and Jupiter.



**Marc Forrest** displayed an A-B diesel pair decorated for Union Pacific and a 7-car passenger set in HO scale. Marc explained that these are early products of Pacific Fast Mail.



Marc said that his was his first valuable and attractive PFM set.

**Marc Forrest** also displayed a Union Pacific Big Boy in HO scale. This model is by Precision Craft. Marc acquired this locomotive in 2009. It is DCC and sound equipped. This model joins Marc’s other stable of UP steam locomotives.



# CAR HOUSE

May 17, 2012

**Saul Kalbfeld** shared a story that he wrote from inspiration he received following a visit to the Orange Museum in Paris, California. He wrote about a mythical “Orange Museum & Paris” trolley.

**Tom Weiss** brought in a Union Pacific “Lucy Piece.” This is an aluminum coin stamped with an image of the UP’s M10000 streamlined diesel locomotive.



**Jim Zinser** displayed a PFE refer in HO scale which carried both the UP and SP heralds.



Jim also brought in a “ticket” that was used to “admit” one to a funeral of a model railroader.



**Terry Bossick** offered an HO scale Kraus-Moffei diesel hydraulic locomotive decorated for Southern Pacific.



Terry also brought in an HO scale 4-8-2 by Max Gray and lettered for the Southern Pacific.



**Ron King** offered an HO scale 4-6-6-4 [Challenger] ex-D&RGW by Athearn. Ron detailed, painted, and weathered the locomotive. The locomotive is lettered for the Allegheny & Eastern, a branchline of the Erie Railroad.



**Larry Wolohon** displayed an O scale Ten Wheeler. This locomotive is a Great Northern Class E-6.



**Dave Thornton** brought in an O scale 4-8-2 lettered for the Baltimore & Ohio. This model by Sunset represents a Class T-3 [light] Mountain.



**Bill Gawthrop** brought in an HO scale SD40-2 by Kato. The locomotive includes extra details to conform to the prototype.



The prototype was acquired from UP/MP in the 1980’s and was patched painted (as seen here in the model), then painted in the GT [blue/orange] “noodle” scheme in the mid-1990’s. It was one of the last SD40-2 to remain in the blue-orange scheme and it’s still in operation today.

# CAR HOUSE

May 17, 2012

**Paul Runyan** brought in an HO scale 50' automobile box car lettered for Union Pacific.



**Tim Fisher** displayed a Union Pacific Challenger and books. The locomotive is in HO scale.



**Thomas Pelle** brought in Z scale grain cars and a Z scale engine.



**Gene Kome** brought in two HO scale box cars, one lettered for UP and one lettered for the SP. Both cars are by Athearn. Gene assembled these cars many years ago.



Please forward any and all erratta to Bill Gawthrop, Car House editor at [wegawthrop@aol.com](mailto:wegawthrop@aol.com). Virtual tomatoes are also welcome..... it's part of our quality improvement.....

## This Month's Clinic

This month's clinic was an interesting video featuring the building of replicas of the Jupiter and "119". The original locomotives were, of course, the "power" present at the driving of the golden spike in 1869 joining the eastern and western portions of the transcontinental railroad.

### Upcoming Events

- July 22: Lake Shore Garden Railways tour. Jerry Shanek will forward details.
- July 29 – Aug. 4: Grand Rails, NMRA 2012 National Convention, Grand Rapids, MI: [www.gr2012.org](http://www.gr2012.org)

### June Clinic

The June clinic will be the history of narrow gauge.

### Division 8 Board of Directors

Superintendent: John Jackson  
[jdsmjackson@sbcglobal.net](mailto:jdsmjackson@sbcglobal.net)  
 Treasurer: Paul Runyan  
[prrdi61@sbcglobal.net](mailto:prrdi61@sbcglobal.net)  
 Secretary: Bill Gawthrop  
[wegawthrop@aol.com](mailto:wegawthrop@aol.com)  
 Director: Saul Kalbfeld  
[fjgbus@gmail.com](mailto:fjgbus@gmail.com)  
 Director: Jerry Shanek  
[Jerry\\_shanek@yahoo.com](mailto:Jerry_shanek@yahoo.com)

### Next Meeting's Show and Tell

The Show & Tell topic for June is anything **narrow gauge**.  
 Of course, you may bring in your current favorite project as well.