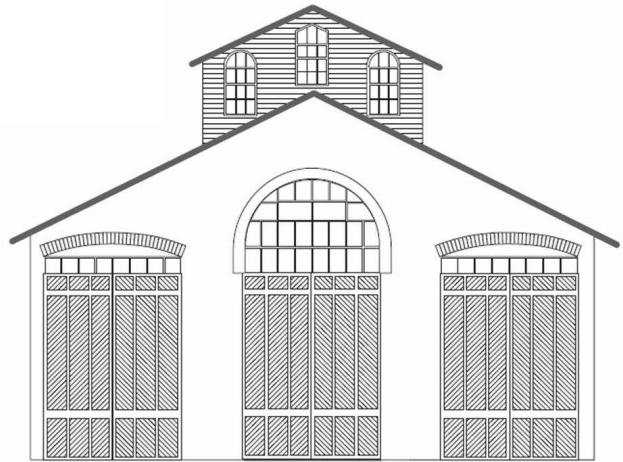


# CAR HOUSE



Website:  
<http://div8.ncr-nmra.org>

Website:  
<http://www.nmra.org/>



## THE NEWS

MAY 15, 2014

### Modification of Division 8 Constitution

Troy, MI: The NMRA is trying to restore the individual tax status back to the Divisions within NMRA. As such, the third paragraph of our Division 8 Constitution is modified to exclude “social activity” and replace with “educational.” To comply with the requirements of the tax code.

### Model of the Quarter

Troy, MI: The Model of the Second Quarter 2014 is a piece of maintenance of way rolling stock.

The rules are as follows:

1. The rolling stock cannot start from a ready-to-run model.
2. The maintenance of way model may be built in any scale.
3. The model can be either
  - 3.1. Scratch-built *OR*
  - 3.2. Kit-built *OR*
  - 3.3. Kit-bashed
4. The model must be painted and lettered

**Judging of entries will be conducted at the June 19, 2014 meeting**

### Layout Tours to Resume in the Fall

Troy, MI: By acclamation of the members in attendance, it was agreed that the Division 8 layout tours would resume in the fall.

### Errata

Troy, MI: The caption for Fred Cosgrove’s O scale card-stock building should have read “Gordie’s Coney Island.” The structure is just off of a past DUR Club member Basil Motoligin’s DSR Trolley layout.

Sorry for the slip up.

*Bill Gawthrop*

# CAR HOUSE

May 15, 2014

## Show & Tell

### This Month's Theme was Big Steam

**Tim Fisher** displayed an HO scale Santa Fe Hudson. This 4-6-4 represents a 3460 class locomotive, a model of the second group of 4-6-4's for the Santa Fe. The prototype had 84" drivers and 300 psi boiler pressure. Built for speed, these engines pulled Santa Fe's name passenger trains between Chicago and La Junta, Colorado.



**Fred Cosgrove** offered an HO scale N&W Class A 2-6-6-4. The prototype was designed by N&W. The 1224 was built between 1943-1944, the second group of locomotives in this class. The tractive effort was 125,000 lbs. with a drawbar of over 7,000 lbs.



**Rick Ware** brought in a framed collage of Canadian Pacific steam locomotives in Alberta and British Columbia. Rick obtained the collage from a trip in October 2008. The images include: #2024 in Calgary Historical Park, #2816 "Empress", #2860 "Royal Hudson", #29 static display in front of CPR HQ in Calgary.



**Larry Wolohon** offered an O scale Union Pacific "S" Class 0-6-0. Larry also brought in a copy of the book "Steam's Finest Hour" and a Lionel catalog with a UP Big Boy, 4-8-8-4 on the cover.



**Bill Gawthrop** brought in An HO scale Baltimore & Ohio 2-10-2. The B&O had 125 of these "Big Sixes" as they called them.



**Jim Zinser** brought in an HO scale Soo wood caboose. Jim built the model from a Centralia Car Shop kit.



# CAR HOUSE

May 15, 2014

**Paul Runyan** displayed a Pennsy 2-10-4 "J" Class locomotive. This HO scale represents one of the 125 "J's" built by Pennsy's Altoona Works between 1942 & 1943. The last of the "J's" was scrapped in 1959.



**John Gavasso** offered an HO scale Norfolk & Western Class H-6 2-8-8-2; however, the model is decorated for the Santa Fe.



**Phil Doolittle** brought in a CN 4-8-4 in HO scale. This "U-2g class numbered 6233 is by True-Line Trains. The prototype was built in January 1943 and scrapped in July 1961.



**Phil** also brought in a kit-built old garage in HO scale. He added interior details.



**George Van Duyn** brought in a 4-6-6-4 "Challenger" in HO scale. George improved the model by Rivarossi by adding a power pick-up in the tender and a decoder. He lettered the Clinchfield-prototype for his own railroad. Of course, George did the weathering as well.



**George Anderson** brought in a 1912 Christie Front-Drive Steamer Fire Engine. George wasn't sure of the scale.



**Ken Scherer** brought in a 4-8-4 decorated for the Chessie System. The prototype for this HO scale locomotive pulled the Chessie Steam Special in the 1970's.



**Bob Scherer** displayed a brass 2-6-6-0. Bob has had this HO locomotive for years, but has not gotten around to decorating it.



# CAR HOUSE

May 15, 2014

**Phil Kenyon** brought in an HO scale Pennsylvania mallet.



**Terry Bossick** offered a Pennsy GG! In the Gree-5-stripe paint scheme. This GG1 had a steam generator for heat for passenger cars.

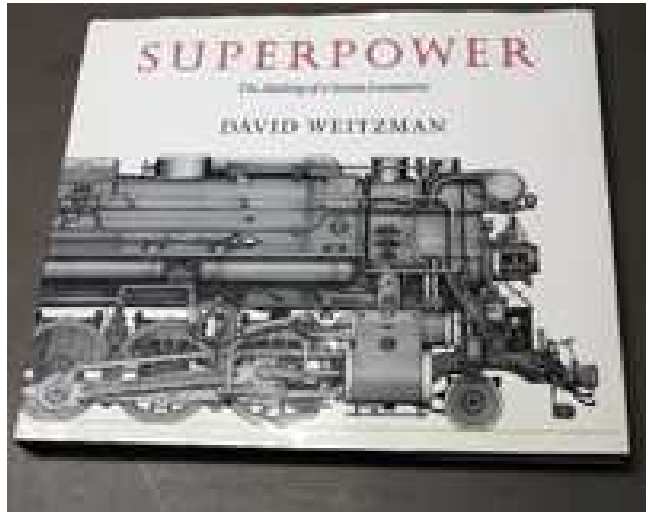


**John Jackson** displayed uncoupling tools:

1. Commercially available "pick" type
2. Scratch-built one modeled after the commercial one
3. Scratch-built from his design using a golf tee with a slight angle and ground on the end.



**Dave Thornton** brought in a book on "Super Power."



**Tom Pelle** brought in a bridge which a fellow made him using a 3D printer.



**Dave Lewis** brought in an N scale Challenger decorated for the Milwaukee Road.



Please forward any and all errata to Bill Gawthrop, Car House editor at [wegawthrop@aol.com](mailto:wegawthrop@aol.com). Virtual tomatoes are also welcome..... it's part of our quality improvement.....

# CAR HOUSE

May 15, 2014

## May Clinic

The May clinic was supposed to be a DVD on big steam. However, due to technical difficulties and the inability of anyone in attendance to get the sound and video to work together, the DVD was not shown. Lesson learned.... If you plan to show a DVD at an up coming meeting do one of the following:

A. Bring your own computer and data projector

**OR**

B. Send the DVD to Dan Lewis several days prior to the meeting so that he may have the proper equipment checked out ahead of the meeting.

Upcoming Events	June Clinic
<ul style="list-style-type: none"> <li>➤ <b>July 13-20: NMRA National Convention,</b> Cleveland, OH, <a href="http://www.2014cleveland.org/">http://www.2014cleveland.org/</a></li> <li>➤ <b>July 18-20: National Train Show,</b> Cleveland, OH, <a href="http://www.nationaltrainshow.org/2014/cleveland.html">http://www.nationaltrainshow.org/2014/cleveland.html</a></li> </ul>	<p>Lewis Hoy will present the "Formation of the Penn Central"</p>
Division 8 Board of Directors	Next Meeting's Show and Tell
<p>Superintendent: John Jackson <a href="mailto:jdsmjackson@sbcglobal.net">jdsmjackson@sbcglobal.net</a></p> <p>Treasurer: Paul Runyan <a href="mailto:prrdi61@sbcglobal.net">prrdi61@sbcglobal.net</a></p> <p>Secretary: Bill Gawthrop <a href="mailto:wegawthrop@aol.com">wegawthrop@aol.com</a></p> <p>Director: John Gavasso</p>	<p>Next month's show and tell theme is Penn Central, or Pennsylvania, New York Central, or New Haven Railroads. Of course you may offer your current favorite project as well.</p>