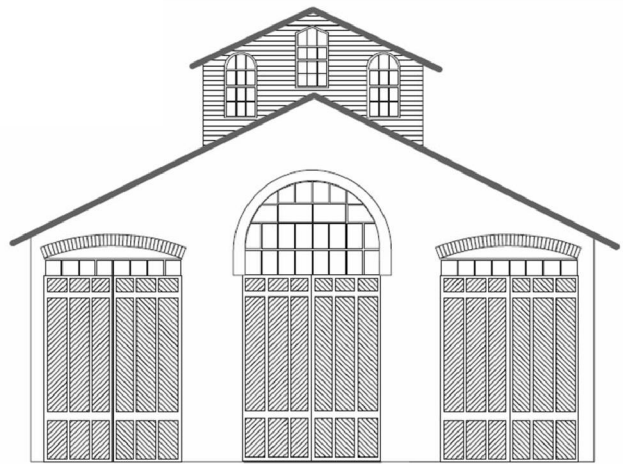


CAR HOUSE



Website:
<http://div8.ncr-nmra.org>

Website:
<http://www.nmra.org/>



The News

May 21, 2015

Model of the Quarter

Troy, MI: The subject for the Model of the Second Quarter in 2015 is a highway bridge. This bridge can be any of a number of varieties of bridges that carry a highway over a river, change in terrain or another right-of-way.

The rules are as follows:

1. The structure cannot start from a ready-to-run model.
2. The structure model may be built in any scale.
3. The model can be either
 - 3.1. Scratch-built OR
 - 3.2. Kit-built OR
 - 3.3. Kit-bashed
4. The model must be painted.

Entrants will be judged at the June 2015 meeting of Division 8.



Guests

Troy, MI: Tonight's guests include:

- Gary Gloss from Harrison Township who models in G scale
- Tom Elan from Farmington Hills

Layout Tour Chairman Needed

Troy, MI: As Phil Doolittle is now our Division Superintendent we are looking for a person to chair the Division 8 layout tours. Candidates should apply to the Division 8 Superintendent.

CAR HOUSE

May 21, 2015

From the Super

Troy, MI: Ever have a project that just drove you nuts? For months? If there's any justice in the world and I get a little luck, I'll bring mine in for Show & Tell this month.

This project was purchased as a craftsman kit (gift from my wife, actually) but it has turned into, not a kit-bash, but a major kit-scratch-bash...and not intentionally! I jumped into it with enthusiasm...in January 2014. It's really a good-looking model. You've seen it advertised in the magazines. You may have seen a well-constructed version of it in the contest room at the Cleveland NMRA Convention last July. It would be a great "front-of-the-layout" showpiece. BUT...

I got the plaster foundation painted and it looks great, but then I broke the front steps off while working on some other part of the process. They'll get glued back on when it's almost done. This kit was designed with pre-cut wall joists to detail the interior. I dutifully stained and installed dozens of them. More on that later. Also to detail the interior, the kit has complete post and beam details. Each post and beam frame looks like an "E" on its side, and at least 60% of the two dozen "E's" *broke* as it was removed from its laser cut sheet of wood. They all had to be glued back together before they could be installed. Once all the post and beam structure was in place, I discovered that the *pre-*

cut joists were cut too long and had to be trimmed in place to fit within the posts, beams and braces!

The 2 long sides of the building, now stained and painted, and with windows and dozens of carefully trimmed joists installed, warped badly. So, I dampened them and pressed them flat for several days. Wouldn't you know it; they came out of the press straight, but distorted and cracked! After a few more days they resumed their warped shape as well. I gave up and rebuilt the sides out of styrene. Hang the interior joist detail! Had to pop all the windows out of the wood sides and reinstall them in the new sides, of course.

The kit came with lots of other interior detail. That means I had to build a plethora of desks, chairs, and drafting tables from micron-sized pieces of laser-cut super-thin plywood, some of which were designed with mis-matched sizes. Oh the patience required! (But largely missing...)

I could go on and tell you of the incomplete instructions, the struggles to install interior and exterior lights, to fill gaps between parts of the building, to replace figures installed inside which were knocked over after the building was all closed up, and so on, but I don't want to drag on like this project has.

Model railroading is fun, but I don't need this much fun again for quite a while!

Phil

Doolittle Attends Mid-Central Region Convention

Phil Doolittle described the format and activities at the spring Mid-Central Region Convention in Lexington, KY.

Phil said that overall the convention was very good in all aspects. Mike Brestel was the keynote speaker.

CAR HOUSE

May 21, 2015

Show & Tell and Clinic

This Month's Theme Showing Telling About
Something from Your Favorite Railroad

Saul Kalbfeld is designing a new layout to replace the NYC-based one that is in his basement. The new HO scale layout will have a NYC theme.



Richard Kubeck brought in three HO scale demonstrator locomotives:

- GE GEVO
- EMD SD70ACE
- GE AC6000



John Gavasso displayed a brass HO scale NYC Class F12e 4-6-0.



Ken Scherer offered a post card showing a Grand Trunk Western 4-8-4.



Rick Horn brought in an HO scale Detroit Terminal RR NW-2. Rick said the he was fortunate to "drive" the prototype when he was a youngster.



Bob Scherer offered a Detroit Bay City & Western box car that he kitbashed from a mixture of Accurail, Tichy, and spare parts.



CAR HOUSE

May 21, 2015

Mark Mincek brought in an HO scale B&O F7A. The model is by Athearn Genesis.



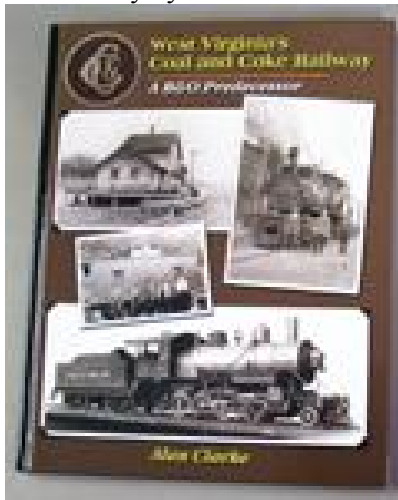
Paul Runyan displayed a Pennsylvania RR F7A detailed match the prototype. He also displayed The Pennsylvania Railroad in the Late 1940's-1950's by Don Ball. Paul opened to the page in the book showing the prototype for which he detailed the [Stewart] model.



Kent Aughe displayed a book on the Monon and described why he likes this railroad.



Bill Gawthrop offered a book, West Virginia's Coal & Coke Railway by Alan Clarke .



John Jackson brought in samples of two of his favorite railroads. They include:

- GTW Alco S2/S4
- N/S 615-1



CAR HOUSE

May 21, 2015

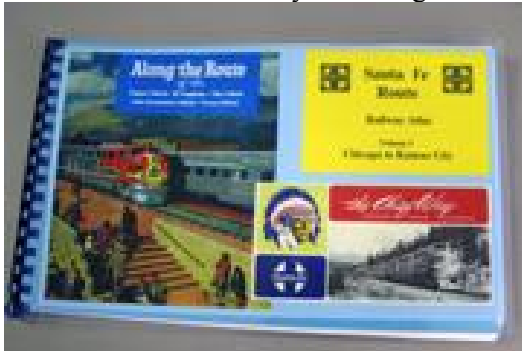
Phil Kenyon brought in an N scale 2-6-0 decorated for the C&O.



Thierry Lach displayed an N scale GE 44-onner by Bachmann.



Gene Kome brought in a Santa Fe Atlas covering the line from Kansas City to Chicago.



Rad Jones offered a background building in N scale. The building is representative of small town buildings in Michigan along the New York Central.



Rick Ware offered:

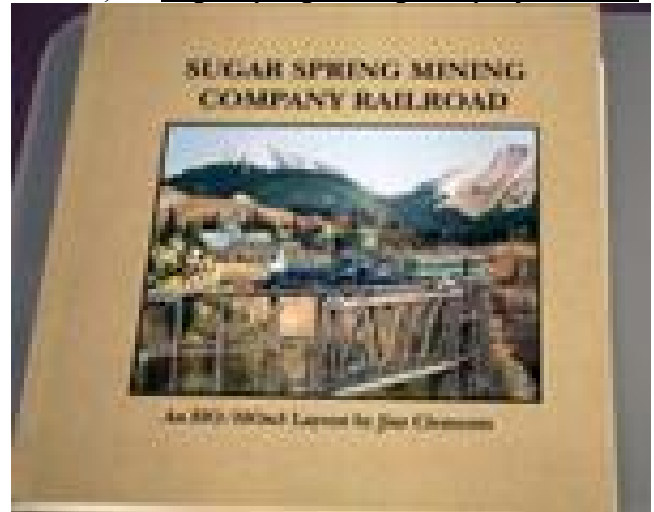
- The Durbin Route, a book describing the history of the C&O Greenbrier Branch (eastern W. Va.) which is a major reference for Rick's layout.
- A C&O stock certificate
- Chessie System litter bag



George Anderson brought in an On30 passenger train including the engine "Delaware" and two coaches.



Jim Clements brought in a book about his HO railroad, the Sugar Spring Mining Company Railroad.



CAR HOUSE

May 21, 2015

Larry Wolohon brought in an O scale RS-1 decorated for Great Northern Railway and RR History.



Fred Cosgrove offered an HO model of the Chicago South Shore & South Bend Railroad "Little Joe" #801. This MTH model has DCC and sound, rising pantographs and automatic uncouplers. It compared in power with the Pennsy GG1 according to Fred.



Phil Doolittle brought in examples in HO scale of his favorite railroads.

1. DT&I GP40 typical of engines he uses on Free-mo layouts emulating railroads in southeast Michigan.
2. CN 2-8-2 The class 1 that his railroad connects with
3. "DOO Line" 4-4-2 (ex CNW) by Tenshodo (from the 1960's) representing his (to-be-built) short line. D-O-O stand for the cities (yet to be named) that the railroad serves.
4. "Alan" 2-truck Shay (Benson) also from the 1960's. "Alan" stands for the "Apparition Logging and Navigation's dual-gauge logging and other stuff operation that will have Trackage rights on the DOO Line.



Thomas Cipelle brought in an HO scale loaded autorack.



CAR HOUSE

May 21, 2015

Upcoming Events	June Clinic
<p>➤ July 11: Detroit Model Railroad Club open house, Holly, MI, www.dmrrc.org</p>	<p>Pat Messey will talk about hobby shows.</p>
Division 8 Board of Directors	Next Meeting's Show and Tell
<p>Superintendent: Phil Doolittle doolittle@comcast.net Treasurer: Paul Runyan prrdi61@sbcglobal.net Secretary: Bill Gawthrop wegawthrop@aol.com Director: John Gavasso John Jackson jdsmjackson@sbcglobal.net</p>	<p>The topic for the June Show & Tell is some you bought at a hobby show. You, of course, may bring in your current favorite project.</p>