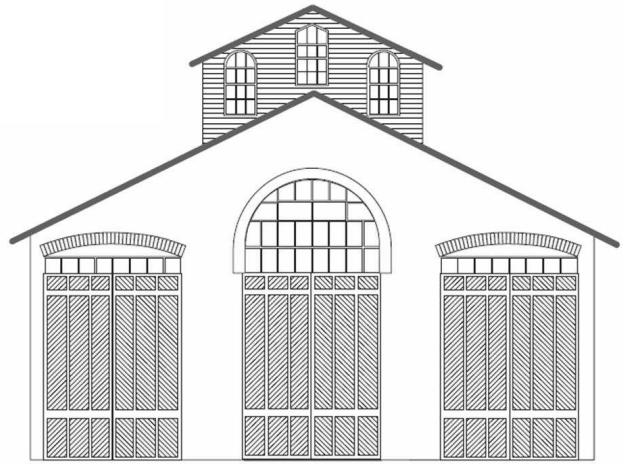


# CAR HOUSE



Website:  
<http://div8.ncr-nmra.org>

Website:  
<http://www.nmra.org/>



## The News

May 19, 2016

### Curtain Falls

Grosse Pte. Woods, MI: The curtain falls on the HO scale Cimarron & Santa Fe of Tim Fisher. Soon the railroad empire will only be a memory as Tim prepares to move to new quarters.



### Guests

Troy, MI: A guest at tonight's meeting is Dave Okowski (sp?). Dave models in HO scale with a modular layout.

### Pay Up

Troy, MI: Twelve peoples still owe Division dues. If you are one of these people would you kindly help our treasury?

### Promoting the Clinton River Division

Troy, MI: One more time the Division is making an effort to attract those NMRA members in our area who are not Division members, You could do your part by encouraging one of these NMRA members or another model to join us on the third Thursday of every month of some modeler comradery.

### Division Logo in need of a Makeover

Troy, MI: The Division logo needs a makeover to show "Clinton River Division." Who out there has the skills and tools to take on this task?



### The Wheeling & Lake Erie

Bellevue, OH: The Wheeling & Lake Erie Railroad is a regional railroad that operates in northern Ohio and western Pennsylvania. The Railroad is known for its eclectic paint jobs on its locomotives. Here's a recent example from Bellevue, Ohio



Photo by Bill Gawthrop

# CAR HOUSE

May 19, 2016

From the Super, June 2016.....

Fourteen NMRA members, most of them from the Clinton River Division, spent Saturday, May 21 at Rochester's Van Hoosen Farm Museum weathering rolling stock under the guidance of visiting instructors Alan Bell and Jeff Youst. Here are a few photos of the action.



Here Alan is applying Dullcote using an air brush and a clamp stand to hold the model. His advice is to always clean the model first using alcohol and a cotton swab, then Dullcote it to give it some "tooth" for weathering powders to grab on to, and to totally avoid touching the model with your bare fingers until after the weathering is finished and re-sealed with another coat of Dullcote.

Our special thanks go to George Van Duyne for supplying the spray booth and compressor that enabled the group to apply the Dullcote. Also our thanks are due to the museum staff for erecting a nice tent under which the spray booth was kept shaded. (I'd add "and dry", but we never had any rain.)

Jeff Youst gives John some pointers on application of paint to his C&O caboose. In the course of the day, John turned this shinny new, almost toy-like model into a very fine looking respectable working railcar anyone would be happy to have running on their railroad.



Jeff and Allan offering walk-around pointers.



# CAR HOUSE

May 19, 2016



Warren visits the snack table.  
Nobody went hungry!

Bill asks a question while some work, some pay attention, and some snack.



Many of the attendees expressed appreciation and enjoyment for the workshop on Saturday. As it turns out, only a few attended on Sunday, but those who did had the opportunity to watch weathering instructional DVD's and experiment with additional techniques. I actually had some success fading a bright red Canadian Pacific gondola using a heavy coating of white artist oil paint, and then carefully removing most of it with a clean paint brush and Turpenoid. It's scary to put that much paint on, but as you work it, it gets lighter and lighter until it actually looks pretty good!

This workshop was one of several attempts to improve the experience we can have through the Clinton River Division of the NMRA. If you have any suggestions for other activities or opportunities to make our Division better, please pass them on to me. Thanks.

Phil Doolittle, Superintendent  
Clinton River Division NMRA NCR

# CAR HOUSE

May 19, 2016

## Show & Tell

### This Month's Theme was anything Scratchbuilt

**Greg Rich** offered an iron bridge which he built using an Atlas deck truss bridge and pieces of scrap. The model is in HO scale.



**Tom Hoermann** brought in an HO scale box car which he scratchbuilt as a replica of a 24 foot Sandy River Railroad car. The prototype box car was built by the William Dyer Company of Strong, Maine circa 1890.



**Bill Gawthrop** displayed an O scale privy. The model was inspired by the multitude of like-type structures common across West Virginia in the 1940's and 50's. The model is built from individual boards. It includes a scale Montgomery Ward catalog and can of lime.



**Phil Doolittle** brought in an HO scale water tower which he scratchbuilt. This tower dominates his Free-mo module "Wheatland Junction." Phil says that largest construction challenge was the proper spaces of the tower's 5 legs.



**John Jackson** offered a cement loading shed in HO scale. The shed includes four loading bays. John kitbashed the model from Walthers kits and sheet stock.



# CAR HOUSE

May 19, 2016

**Saul Kalbfeld** brought in a 40-year-old “Colonial Inn” and “Bills Barn”, an NYC caboose, and FastTrack assembly gig. The models are in HO scale.



**Richard** Kubeck offered some favorite tools including a Rigid palm drive and an engineer's flashlight.



**Ken Scherer** scratchbuilt three types of farm wagons in HO scale, including a gravity wagon, ammonia wagon, and hay wagon.



Ken also displayed some structures that he built in the long-ago past.



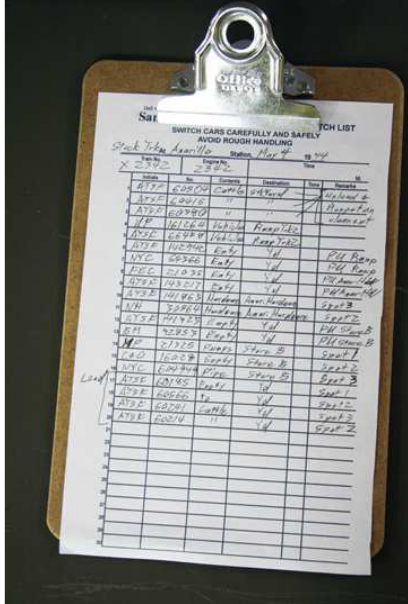
**Bill Moore** brought in an HO scale Armour Beef & Provisions Building. Bill built the model from a Walthers Cornerstone kits. Bill was inspired by the triangular prototype in Holyoke, Mass.



# CAR HOUSE

May 19, 2016

**Tim Fisher** offered a switch list from which he bases his operation sessions. The lists with a typical 10-car consist can be used with extras and/or locals to provide fun and challenges.

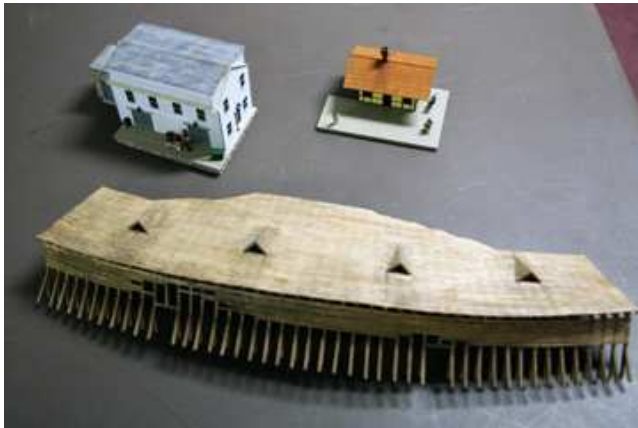


**Steve Akers** displayed a scratchbuilt HO scale gas station and store.



**Marv Linke** brought in N scale models:

1. Passenger stop, all scratchbuilt excepts door and windows
2. Machine repair, all scratchbuilt excepts door and windows
3. Snow shed, all scratchbuilt



**Larry Wolohon** brought in a #6 O scale LH switch scratchbuilt using a FastTrack template and the latest double issue of Railway Prototype Cyclopedia, Volumes 31 & 32.

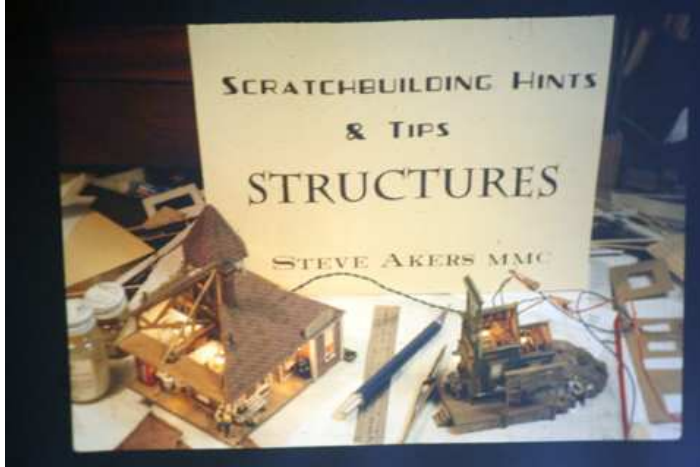


# CAR HOUSE

May 19, 2016

## May Clinic

Steve Akers presented a very interesting clinic on scratch building. He explained techniques that he has used and showed examples. Steve entertained a number of questions from the audience.



## Upcoming Events

- **Jun.11 & 12:** Detroit Model Railroad Club Open House, [www.dmrrc.org](http://www.dmrrc.org)
- **July 3 – 10:** NMRA Convention, Indianapolis, IN, <http://www.nmra.org/conventions/highball-indy>

## June Clinic

Richard Kubeck will present a clinic on tools.

## Division 8 Board of Directors

Superintendent: Phil Doolittle  
[doolittlep@comcast.net](mailto:doolittlep@comcast.net)  
 Treasurer: Paul Runyan  
[prrdi61@gmail.com](mailto:prrdi61@gmail.com)  
 Secretary: Bill Gawthrop  
[wegawthrop@aol.com](mailto:wegawthrop@aol.com)  
 Director: John Gavasso  
 John Jackson  
[jdsmjackson@sbcglobal.net](mailto:jdsmjackson@sbcglobal.net)

## Next Meeting's Show and Tell

The topic for Show and Tell is:  
 1. Your favorite tool  
 Or  
 2. Your current favorite project