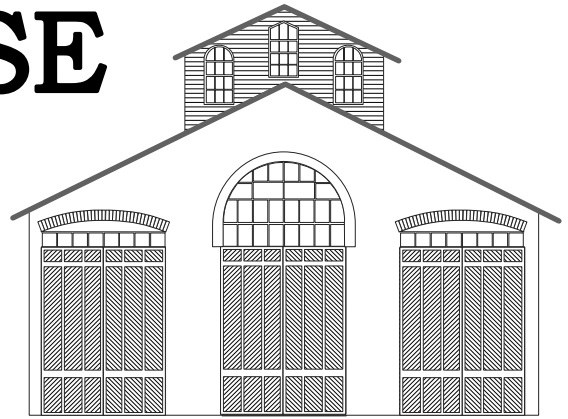
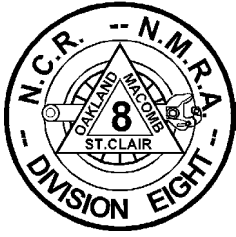


# THE CAR HOUSE

The Monthly Newsletter of  
Division 8 North Central  
Region  
National Model Railroad  
Association  
June 18, 2008  
Website - <http://div8.ncr-nmra.org>



**CONGRATULATIONS TO ALLEN CROWLEY AND RAD JONES. ALLEN, AT LEFT RECEIVES HIS AP ELECTRICAL ENGINEER AWARD FROM LARRY WOLOHON. AT RIGHT, RAD JONES IS PRESENTED HIS AP SCENERY AWARD.**



## Call to Order

The regular meeting of Division 8 was called to order at 7:06 PM. After the group settled I was able to count about 30 present not counting the usual stragglers who arrived after the tally. A moment of silence please for the immanent departure of Tiger stadium. Our beloved Michigan Central Depot, down the street, should also have a similar dignified end.

## Show and Tell

This month's topic of resin based kits brought out a diverse group of offerings. **Jim Zinser** showed a Westerfield stock car that had been a convention car at the 1989 Houston NMRA convention. The good looking car carries reporting marks for the Houston and Texas Central. Jim also commented that the convention is memorable due to the hurricane that stuck during convention week. **Larry Wolohon** has considerable experience working with resin kits. This will be the subject of his clinic at this year's national convention. He showed a Southern SU class boxcar, circa 1920. He also brought a Sunshine models Central RR of Pennsylvania gondola carrying a heavy load. Finally he showed a current project, Irv's Hardware from Sylvan Models, based on the modeling style of the late **Irv Schultz**. Just when you thought you knew every tool in the store, **Dave Thornton** showed off a Forstner bit, useful for boring large holes in wood stock, and neatly too, I might add. The results are way too neat for use by a common electrician. **Dan Lewis** showed an N Scale resin kit. He commented that such products are not common in N, but did show one car that turned out nicely. **Rick Ware** brought in a good looking covered bridge by Campbell, a railfan trip hat, sorry I missed the specifics and an example of a bad Woodland Scenics tree model, shades of our beloved "**Thumbs**". **Show and Tell** continued on the next page.

## A RECENT HOROSCOPE THAT APPLIES TO ALL MODEL RAILROADERS

Inspiration for the year of the MMR

**PISCES** (Feb 19-March 20) You are capable of handling 10 projects at once. It's especially true of projects that appear to have nothing to do with each other. Actually, they're all part of the same goal.

## Show and Tell Continued

**Ed Black** showed off a hobo friendly truss rod box car, with 8 rods for maximum comfort. **Dick Dittus** resin steam shovel kit, 100 parts, when assembled makes a dandy model. We'll be expecting updates. **Joel Goldberg's** current project is a scratch built engine house with a removable roof and abundant interior detail. Joel thanks **Ed Black** and **Dick Dittus** for their assistance and guidance. **Dan Mitzel** is working from a 1972 RMC article to crate a microlayout. The project is the first stage of a branchline layout. he discussed how he has researched small town trackplans that he obtained through the South Dakota records and archives. **Rad Jones** showed a yard office resin kit, a narrow building that can be sandwiched between yard tracks. Lots of add ons are available for the basic kit, including interior details.

Keen observer **Tim Fisher** noted that its a workplace where no one can lie down on the job. **Jim Clements** brought in an outhouse kit that is available as a web

download from Paper Creek Models. He commented that full instructions are included. Jim's other current project is a series of laser cut outhouses for stations along the line. **George Anderson** has a book release coming entitled **Copper Country Rail**.



**Uwe Thormaehlen** commented on a European magnetic control system which guides model cars along a hidden wire. **Tim Fisher's** usual current project is rounding p articles for the NCR Hotbox. **Jim Zinser** has an article in the works covering his top 20 modeler's tools. Phil Doolittle brought in an old time truss rod box car. He said that the rods interfere with the trucks. Assistance from the membership came in the form of "cut the rods." Ouch. **Jim Hiller** took us back in time to 1954 with his Lionel PRR 6-8-6. A very nice tinplate model. He also brought in the 1954-1955 Lionel catalog. I remember that one with Dad and Son's amazed expressions. Thanks to all who participated in this month's **Show and Tell**, and to those who didn't, there's always next month.

**Financial Report** The checking account has a balance of \$1933.31 in addition to the two 1k CD's. Collections are up to date and the division has 86 members. The consensus is that the various recruiting efforts have paid off with the addition of new members. **Dan Lewis** made a motion that the division purchase another 1k CD. This was seconded by **Joel Goldberg** and so carried.



## Announcements

The South Oakland County Model RR club will host a card order operating session on July 26. Further details not available. For the September NCR convention in Toledo, **Dave Thornton** announced that featured speakers will be **Allen McClelland** and **Andy Sparandeo**.

## NMRA News

**Dave Thornton** said that the organization is trying to break the twenty thousand member barrier with a recruiting drive this year. For Several years membership has been stuck below this goal. Also the NCR should be receiving the four thousand dollar distribution from the GLE2007 convention.

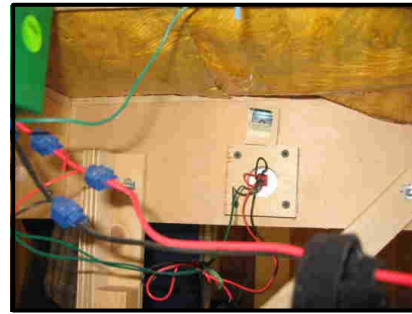
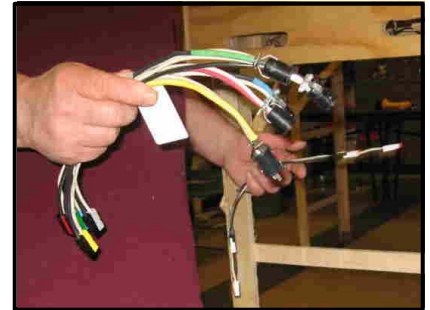


## Free-MO Update by Phil Doolittle

Pictures below are several photos from the recent Free-MO seminar. Phil reported at the division meeting that a proposal for prospective participants is being formed with the intention of the first functional modules being ready by the end of 2008. About 30 people attended the seminar. The main focus of the group will be gatherings to operate the assembled modules for the membership. Operation at public shows is a secondary and much less important objective. At this time, the theme of the organization will be operations and the scenery of southeast Michigan in the late 1970's. An ideal train length would be about 15 cars to keep passing tracks on a single track mainline to a reasonable length. In addition to individual's modules, a community effort is needed to construct a staging yard and turning loop. These would be stored by a member of the group who has the space to accommodate their size. For those who are able to surf the web, there is an abundance of Free-MO technical and design information available.

## FREE-MO SEMINAR MODULE DETAILS

Digital photos by Saul Kalbfeld



## Upcoming Schedule

The next meeting of Division 8 of the NCR of the NMRA will be held at 7:00 PM on July 17, 2008 at the Troy Christian Chapel located at 400 E. Long Long Lake Road in Troy on the south side of the street between Livernois Road and Rochester Road.

**Thanks again to Joel Goldberg for this month's digital photography.**

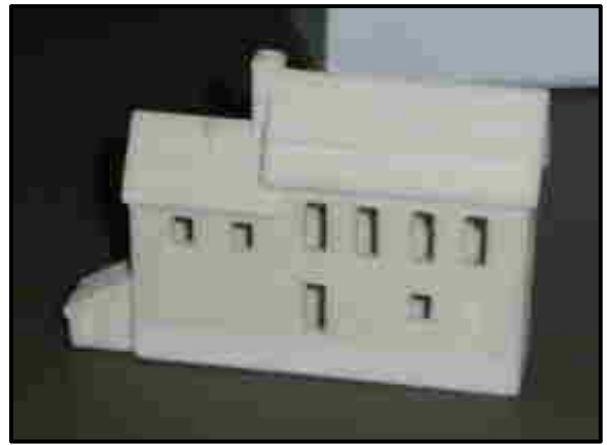
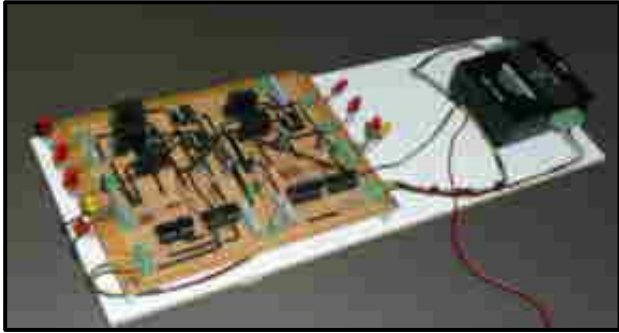
**The scheduled clinic will be a video on train wrecks presented by Jerry Shanek**

**The Show and Tell subject for the meeting will be railway work equipment or a current project.**

The June, 2208 meeting was adjourned at 9:40 PM.

Respectfully Submitted,

**Saul Kalbfeld, Division 8, NCR-NMRA Secretary**



Saul B. Kalbfeld  
4837 Pelican Way  
West Bloomfield, MI 48323

**FIRST CLASS MAIL**

