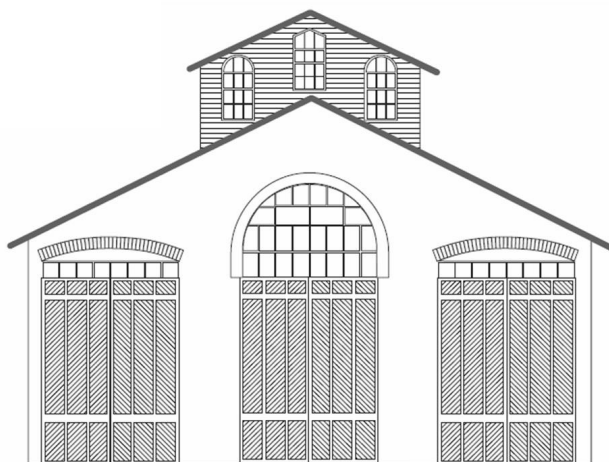


The

Monthly Newsletter of **Division 8** North Central Region of the NMRA

# CAR HOUSE



Website:  
<http://div8.ncr-nmra.org>

Website:  
<http://www.nmra.org>

## The News

June 21, 2012

### Another Achiever

Troy, MI; Larry Wolohon presents Gene Kome (right) with his certificate for Master Builder – Scenery. Congratulations Gene!



### Moore's Layout Featured

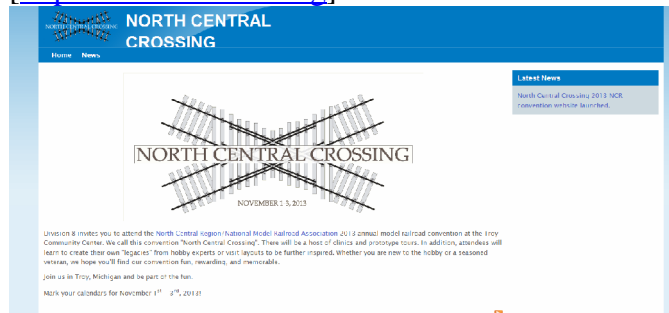
Milwaukee, WI: Bill Moore's [Grosse Point version] Bedford Division of the Boston & Maine in HO scale is featured in the August 2012 edition of Model Railroader Magazine! The article features Bill's benchwork-to-ceiling super detailed mountain scenery.

### 2013 NCR Convention

Troy, MI: Plans are moving forward for the 2013 North Central Convention, "North Central Crossing." The venue [Troy Community Center] is secured.



Initial promotion is planned to occur at the National Convention as members of Division 8 will wear buttons emblazoned with the Convention logo. The website [[www.ncr2013.ncr.nmra.org](http://www.ncr2013.ncr.nmra.org)] is active and can be accessed from Division 8's website [<http://div8.ncr.nmra.org>]



On-line promotions are planned to begin in September.

# CAR HOUSE

June 21, 2012

### Railfanning

Buckhannon, WV: This is prime weather for checking out the prototype. Maximum daylight, bright and sunny skies, and warm weather add to the pleasure.



Leased units on the Appalachian & Ohio Railroad, Buckhannon, W. Va., June, 2012

Photo by Bill Gawthrop

### Model of the Second Quarter 2012.

Troy, MI: Sadly, there were no entrants for the Model of the Second Quarter 2012 contest.

### Model of the Third Quarter 2012.

Troy, MI: The Model of the Third Quarter Contest will feature another structure. This time it will be a vehicle. Yes, if you were to enter a vehicle to be judged for an NMRA award, it would be entered in the “structures” category. Don’t ask me; that’s the rule.



Anyway, here are the rules:

1. The vehicle may be scratch-built or kit-bashed
2. The vehicle may be in any scale.
3. The application of the [prototype] vehicle may be on-road or off-road.
4. The vehicle must be painted.

## Show & Tell

Figures or your favorite current project

**Jim Clements** brought in spikes and rail from a narrow gauge gold mine in California. Jim also offered spikes from a narrow gauge line in copper country in the Upper Peninsula of Michigan.



**George Anderson** displayed a Mason Bogie in On3 scale. This Max Gray product is custom painted and lettered.



# CAR HOUSE

June 21, 2012

**Marv Linke** displayed an HO scale 2-4-4-2 which he is repairing for Ed Black. Marv made running gear repairs, replaced the drive gear, modified the motor and its mount, and added electrical pick-up wipers for all wheels.



**Dan Lewis** displayed trees that he is fabricating. These trees are made from Super Trees products of Scenic Express. The trees are enhanced to represent cottonwoods and aspens.



**Bob Scherer** brought in a commemorative HO<sub>N3</sub> scale box car lettered for Soundtraxx.



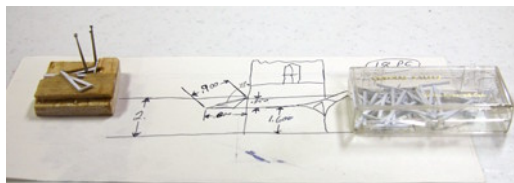
**Larry Wolohon** displayed a Conoco tanks car in HO<sub>N3</sub>. Larry scratchbuilt the car a while back and won second place in a rolling stock contest.



**Ken Scherer** displayed two brass belt buckles which he received as presents.



Ron King brought in roof brackets [from Evergreen 2x6's] for the HO scale Montclair station that he is scratch-building. The station will go in Akron on his layout.



**Phil Doolittle** brought in an HO<sub>N3</sub> train. The locomotive is a product of Blackstone with DCC and sound. The locomotive will be lettered for the D&RGW, The box car was built from a Alan Co. kit.



**Bill Gawthrop** offered a current project, the building and weathering of open frame autoracks in HO scale. These open frame cars represent the prototype in the 1960's and 70's. He is building these cars and finishing his Woodhaven, MI auto load-out module in preparation for the Free-Mo set-up at the National Train Show in Grand Rapids.



# CAR HOUSE

June 21, 2012

**Rick Ware** offered a 4-wheel side dump ore car also known as a "U-Hopper." The car is a G scale product by Bachmann.



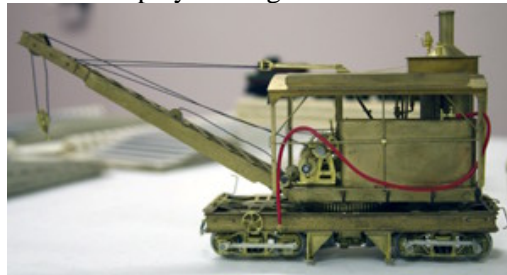
**George VanDyne** presented an HOn30 industrial tram. The models are from AHM circa 1965. The locomotive has a scratchbuilt body to resemble an electrical "mule."



**Thomas Dart** offered a beautiful On3 D&RGW "Mudhen", class K-36.



He also displayed a log loader in On3.



Both models are by Overland.

As Thomas was unable to attend (the street in front of his house was impassable due to construction), Bill Gawthrop presented the models on his behalf.

**Fred Cosgrove** displayed a Rio Grande 2-8-0, Class C-16 in On30 scale. The model is by Broadway Limited and includes DCC and sound.



**Dave Thornton** displayed in three albums a collection of photos of Colorado narrow gauge that he took in 1971.



**Jim Sieradzinski** displayed a D&RGW 2-8-0 which he custom painted and weathered. The model is by Roundhouse.



# CAR HOUSE

June 21, 2012

Please forward any and all erratta to Bill Gawthrop, Car House editor at [wegawthrop@aol.com](mailto:wegawthrop@aol.com). Virtual tomatoes are also welcome..... it's part of our quality improvement.....

### This Month's Tip

**Marv Linke** offers the following tip. Insulating exposed wires, especially in tight places can be made easy using nail polish. Marv purchases the least expensive brand in any color to do the job.



### This Month's Clinic

This month's clinic was given by Rad Jones and Jim Clements entitled, "Standard, Narrow and Dual Gauge with the Sugar Spring Mining Company." Rad, first gave an overview of the various gauge sizes throughout the world. He then gave a bit of history about the resolution of a standard for "standard gauge" of 4' 8 1/2" and "narrow gauge" of anything less than 4' 8 1/2." The most prominent "narrow gauge" size in the U.S. are 3' 6."

Jim then showed various scenes on his HOn3 scale Sugar Spring Mining Company layout. These scenes illustrated the application of standard, narrow and dual gauge track.

#### Upcoming Events

- "Grand Rails," the 2013 edition of the NMRA Convention, Grand Rapids, MI, July 29 – August 4.

#### July Clinic

"Freight Cars" by Vince Robinson.

#### Division 8 Board of Directors

Superintendent: John Jackson  
[jdsmjackson@sbcglobal.net](mailto:jdsmjackson@sbcglobal.net)  
 Treasurer: Paul Runyan  
[prrdi61@sbcglobal.net](mailto:prrdi61@sbcglobal.net)  
 Secretary: Bill Gawthrop  
[wegawthrop@aol.com](mailto:wegawthrop@aol.com)  
 Director: Saul Kalbfeld  
[fjgbus@gmail.com](mailto:fjgbus@gmail.com)  
 Director: Jerry Shanek  
[Jerry\\_shanek@yahoo.com](mailto:Jerry_shanek@yahoo.com)

#### Next Meeting's Show and Tell

Anything freight cars, or your current favorite project.