

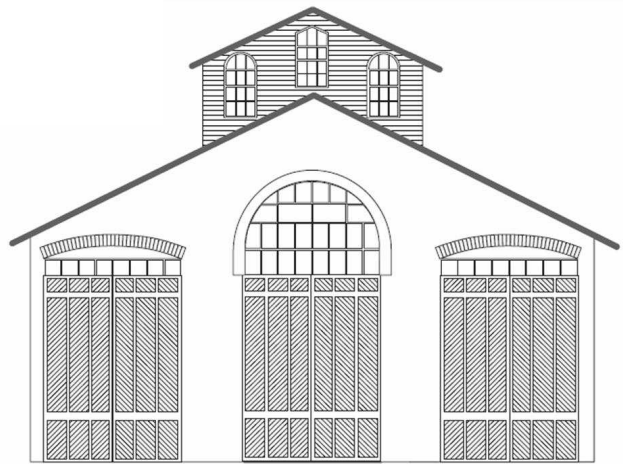
# CAR HOUSE



Website:  
<http://div8.ncr-nmra.org>



Website:  
<http://www.nmra.org/>



## The News

August 20, 2015

### From the Super

Troy, MI:

### I Lessons from the Empire Builder

Most of you know that several Division 8 members, me included, were in Portland last week for the NMRA Convention. I wondered what aspect of the convention to write about, but it hit me on the way home that I should focus this little article on the trip home rather than the convention itself.

My wife and I rode the Amtrak Empire Builder from Portland to Minneapolis, where I am now, using a friend's computer to compose this note. So here are my lessons from the Empire Builder.....

- There are a HECK OF LOT of freight trains going east and west along the Burlington Northern (now BNSF) route used by Amtrak! The largest number consists of 100% covered hoppers, probably grain. Second in quantity are tank trains, followed by intermodal. General freight (including large blocks of auto-racks) hold down fourth place. I only saw one coal train along this route.
- Sections of the route have stunning scenery, the Columbia River and the south end of Glacier National Park specifically,
- Modern railroaders wear bright orange or

- Green visibility vests with reflective yellow stripes.
- Crews "blue flag" trains at night with portable flashing blue lights. They applied these to our train during station stops.
- There are still engines on the BNSF wearing the silver and red Santa Fe "war-bonnet" livery, blue and yellow Santa Fe livery, and green Burlington Northern livery.
- There are still green BN cabooses up in the high country, although I never saw one attached to a moving train.
- BNSF owns a HECK OF A LOT of engines!!!!
- MU lash-ups are most frequently all BNSF, but I also saw BNSF-CSX-NS groupings along with an unidentified unit, perhaps a small road or a lease. And how about BNSF-SF for a charge!
- Track quality varies from silky smooth to feeling like you are on the ties.
- Track maintenance takes a lot of yellow machinery, a ton of guys, and happens a lot. Sectional track and switches abound. They move sectional track with two crawler-tracked excavators, using chains to lift each end of the track with a back-hoe arm.
- Rib-sided covered hoppers have not been supplanted by centerflow cylindrical types, as I once feared. Rib-sides were probably 30 to 40 % of the ones I saw.

[CONTINUED ON PAGE 2

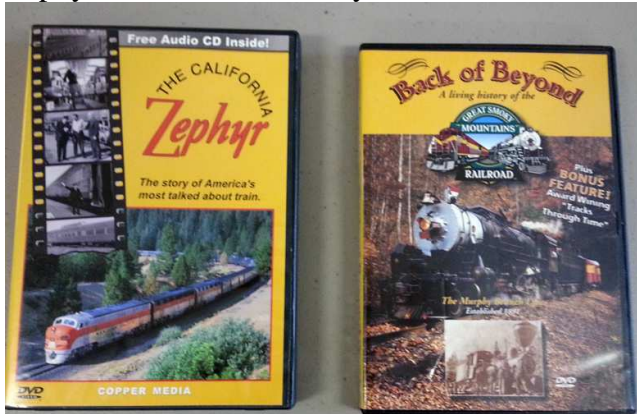
# CAR HOUSE

August 20, 2015

	<p>[CONTINUED FROM PAGE 1]</p> <ul style="list-style-type: none"> <li>• Some graffiti artists are pretty darn clever. They prefer box cars, and tag a few covered hoppers, but pretty much leave tanks alone.</li> <li>• Amtrak dining car food is palatable!</li> </ul> <p>You can learn a lot riding real trains.</p> <p>Phil</p>
<p><b>Thanks</b> Troy, MI: Many thanks to John Jackson who shouldered the duties of Superintendent and Dispatcher while Phil Doolittle and Bill Gawthrop were having fun out west. And thank you, Phil Kenyon for taking the pictures.</p>	<p><b>Layout Tour Chairman Needed</b> Troy, MI: We Say Again: We are STILL looking for a person to chair the Division 8 layout tours. Candidates should apply to the Division 8 Superintendent.</p>

**Show & Tell and Clinic**  
 This Month's Theme is Movie Time  
 Meeting Attendees brought in a DVD of Their Favorite Railroad Topic

**Marv Linke** brought in tow DVDs, "California Zephyr" and "Back and Beyond."



**Phil Kenyon** offered "Love Rides the Rails."



# CAR HOUSE

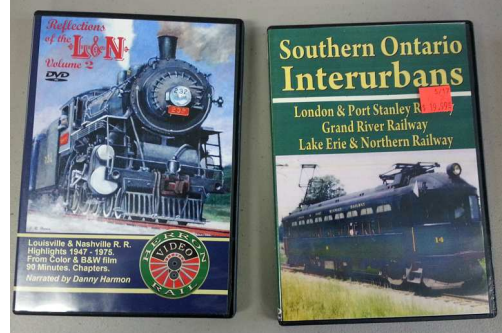
August 20, 2015

**Rick Ware** shared “Dream Plan Build”, “Jim EuDaly’s C&O Hinton” and “Bill & Mary Miller’s C&S Ohio Creek.”

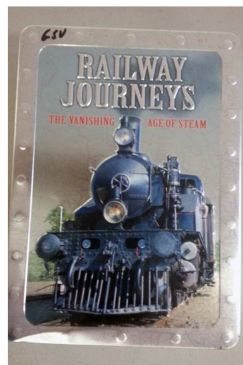


**John Jackson** who also brought in “Dream Plan to Build.”

**Fred Cosgrove** shared “Reflections of the L&N (section on Detroit Terminal) as well as “Southern Ontario Interurban Railways.”



**George Van Duyne** brought in “Railway Journey’s Vanishing Age of Steam.”



**Dave Thornton** displayed a current project, a Rutland box car in O scale.



## Upcoming Events

- **Sept 11-12:** Michiana Education & Technical Conference, South Bend, IN, <http://michiana-nmra.org/2015>
- **Sept. 19:** Redford Model Railroad Club Open House, Inkster, MI, <http://www.redfordmodelrailroadclub.com/index.html>
- **Oct. 29 – Nov. 1:** North Central Region Convention, Fort Wayne, IN, <http://www.nmra.org/region-conventions#NorthCentral>
- Oct. 31 – Nov. 1: Gratiot Valley Trains Show, Mt. Clemens, MI, <http://www.gvrr.org/>

## August Clinic

**Larry Wolohon** will present “Photo Night.”

Members should send Larry [<mailto:larrywolohon@comcast.net>] railroad or model railroad photos (jpeg format) for him to include in the “Show.”

THE

Monthly Newsletter of **Division 8** North Central Region of the NMRA

# CAR HOUSE

August 20, 2015

<b>Division 8 Board of Directors</b>	<b>Next Meeting's Show and Tell</b>
<p>Superintendent: Phil Doolittle <a href="mailto:doolittlep@comcast.net">doolittlep@comcast.net</a></p> <p>Treasurer: Paul Runyan <a href="mailto:prrdi61@sbcglobal.net">prrdi61@sbcglobal.net</a></p> <p>Secretary: Bill Gawthrop <a href="mailto:wegawthrop@aol.com">wegawthrop@aol.com</a></p> <p>Director: John Gavasso John Jackson <a href="mailto:jdsmjackson@sbcglobal.net">jdsmjackson@sbcglobal.net</a></p>	<p>The topic for Show &amp; Tell at the September meeting is any from the NMRA National Convention or your favorite current project.</p>