

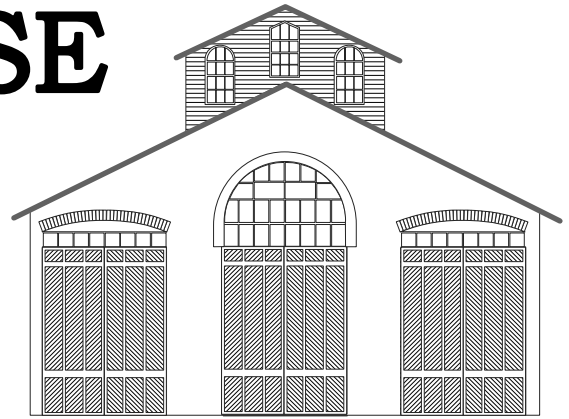
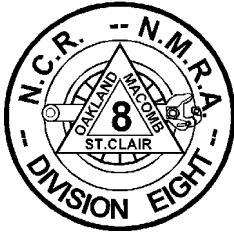
THE CAR HOUSE

The Monthly Newsletter of
Division 8 North Central
Region

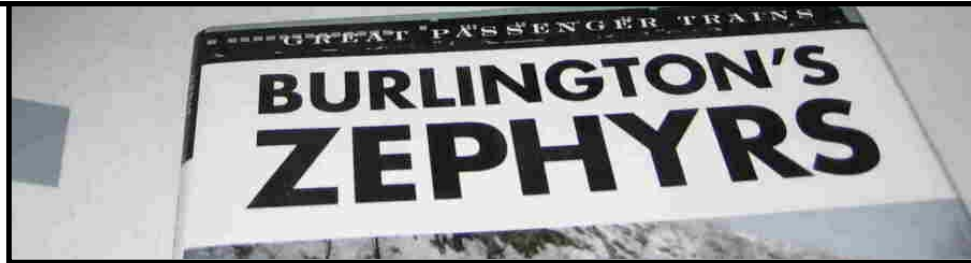
National Model Railroad
Association

September 21, 2006

Website - <http://div8.ncr-nmra.org>



September Show & Tell Topic



Call to Order by Treasurer Marv Linke

The September meeting of Division 8 was called to order at 7:05 PM, according to the standard clock in the main waiting room of the historic Michigan Central Depot in Detroit, which has been listed in the National Register of Abandoned Places. This month we had no new members and no visitors. 28 members were in attendance.

Show and Tell

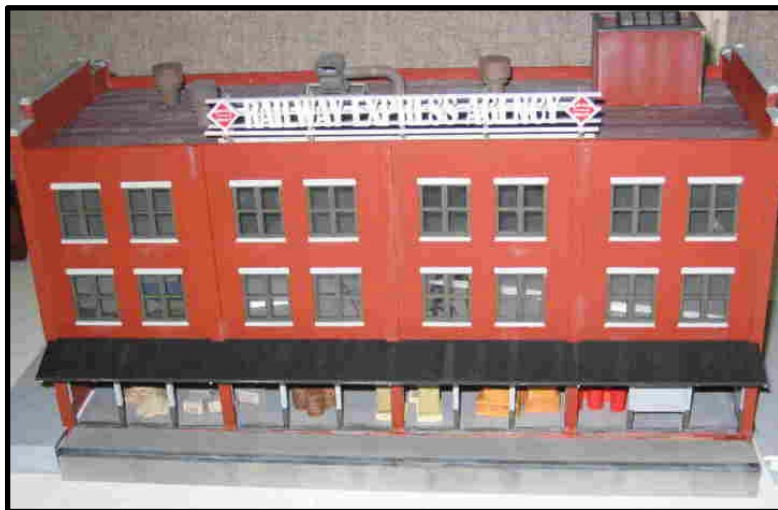
As seen above, the Show and Tell subject was the Burlington's Zephyrs or any or of the many variations thereof. We also had a mixed bag of current projects and favorite models. **Don Varney** brought in an Athearn F7 A-B set as seen above. **Rick Ware** just did a "tell" this month describing having been on the CB&Q Silver Quail car in Chicago. We had 2 copies of the above book shown. **Dave Thornton** compared the CB&Q and poor cousin Rock Island, competitors on the great American prairie. he said the Rock went all the same places as the CB&Q only slower.

Dan Lewis has created a herd of N Scale antelope from Preiser Deer. The process involved surgically removing the rack from the male deer only, drilling holes in the skulls of the unfortunate beasts and installing antelope horns. For those who might be interested, an N Scale deer, after the horns are removed, can also be used as a large dog in HO, a smaller dog in O, some kind of weird rodent in G, and a roach in 1:1 scale. The herd seen at right is out of focus due to random movements of the animals and more likely, someone's shaky hand. **Bill Moore** brought in a Walthers building flat modified to look like an actual mill in Bill's New England region. **Ed Black** brought in a Victorian style house and garage built from the simplest of all materials, cardboard. It is very convincing as a background structure.



Show and Tell continued

Phil Doolittle showed a programming and test track with some additional features. In addition to his on going projects, a highway truss bridge and a stock yard, **Tim Fisher** is working on an auto loading ramp and a stock yard. **Stu Sonta** brought in a nice N scale model of the Union Pacific M10000 passenger train that was a contemporary design of the Zephyrs. **Doug Liefeld** was in Branson, MO recently for a bit of Middle America high culture and returned with a steam engine puzzle. **Jerry Shanek** commented on a PBS series currently running, Modern Marvels and that one of the recent programs featured on freight trains in America. **Saul Kalbfeld** brought in several examples of rolling stock from the 1960's to 1970's to contrast with today's ready to run equipment. I apologize for not getting the names of several members who brought in some very interesting projects. Below right is a Walthers REA building with open freight doors and a multitude of interior detail and a Bar Mills REA roof sign. Also seen below is a pair of Lionel tank cars converted to scale and very nice looking. By far the most interesting contribution was a 1938 Lionel Flying Yankee that has been in the owner's possession since boyhood. Thanks to all members, identified or not who participated in the September Show and Tell and thanks again to **Joel Goldberg** for the digital photos.



Division 8 Business and Finances

Treasurer **Marv Linke** reports the checking account shows a balance of \$2609.51 in addition to 2 \$2000.00 CD's. Unfortunately these will not mature until after the buy in closes at the next **World Series of Poker** in Las Vegas. Marv reminds the members

that annual dues time is approaching and that the cutoff for renewal will be in January. With a change of treasurers coming up Marv wants to make sure the office holder does not have to chase after members for 6 to 9 months. Elections are coming up and president **Curt Danielewicz** and treasurer **Marv Linke** have timed out or in politico talk are term limited and will not be running again. They have some good candidates in mind who could take over. Secretary **Saul Kalbfeld** will serve for another year unless a dark horse emerges victorious in the election to remove him from the post.

Announcements

We mourn the passing of Division 8 member Kenneth Sanborn on October 5, 2006. Ken was 76 and married to beloved wife Lynn. He is survived by three daughters, many grandchildren and great grandchildren. Burial will be in Great Lakes National Cemetery. Memorial contributions may be made to the American Cancer Society or the Henry Ford Hospice. **Larry Lauer** reports that our senior division member, **Bill Peterson**, in Jacksonville, FL recently turned 93 and is in good health. **Tim Fisher** thanks **Larry Wolohon** and **Stu Sonta** for their recent assistance in nursing the Hot Box back to health. The next issue will report on the Grand Rapids convention October 13-15. Tim also reminds us that the HB needs good 1 page articles with photos and drawings if possible. In regional news, the nascent Ann Arbor division, as yet numberless, held a meeting with 17 people in attendance. They are attempting to bury old NMRA and NCR political issues that caused much discord in years past.



2007 NMRA Convention Update

Dave Thornton reminds us that as of this meeting there are 304 days until the 2007 Great Lakes Express convention opens. The layout tours have been mostly finalized and progress is good in other areas. By the time you read this, the October 7th meeting will have occurred with additional progress taking place. Volunteers are needed now and will be needed later. An offshoot of Dave's comments revolved around recent NMRA fund raising letters and how benefactors and money received from deceased members estates can benefit the organization.



Webmaster Report

Marv Linke dons his other hat to say that a new feature of the Division 8 web site will be a "**Photo of the Month**" feature. Send him your pictures with a description for consideration.

Also Department

Multi-hat Marv is also sending material to Scale Rails regarding Division 8 activities, as he will do each month leading up to the GLE2007 convention. If you have anything worthy to say, contact Marv.

Upcoming Schedule

The next meeting of Division 8 of the NCR of the NMRA will be held at 7:00 PM on October 19, 2006 at the Troy Christian Chapel located at 400 E. Long Long Lake Road in Troy on the south side of the street between Livernois Road and Rochester Road.

The Show and Tell for the meeting will be anything on the Pennsylvania RR or a current project. The scheduled presentation is a report on the Philadelphia convention.

The September, 2006 meeting was adjourned at 9:15 with the division gourmands repairing to Big Boy. Actually, Webster's second meaning for gourmand is glutton, but I won't go there. Cheers.

Respectfully Submitted,

Saul Kalbfeld, Division 8, NCR-NMRA Secretary



Saul B. Kalbfeld
4837 Pelican Way
West Bloomfield, MI 48323

FIRST CLASS MAIL

