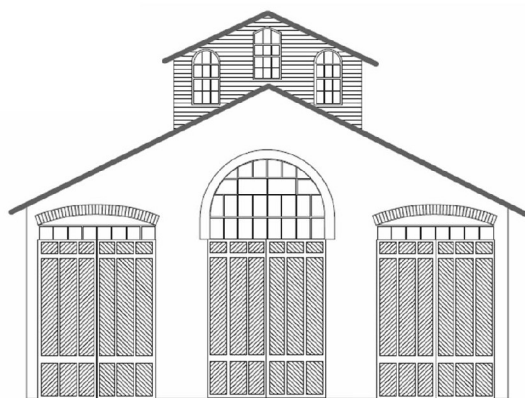


THE CAR HOUSE

Monthly Newsletter of
Division 8 North Central Region
National Model Railroad
Association



Website: <http://div8.ncr-nmra.org>



Meeting: September 17, 2009

The News

Quarterly Modeling Contest Entries



And the Winner Is!

Troy, MI:
The winner
of the
Quarterly
Modeling
Contest,
building a
section
house was
won by Tom
Weiss.



Tom bested the field of 5 entrants who
competed in constructing the section house
based on a Union Pacific prototype.



Division 8 Survey

Troy, MI: The Board of Directors is asking Division 8 members to tell us a little more about your layouts. If you haven't done so, please take a few moments to fill out the survey at the end of this month's newsletter and email it to John Jackson (keeper of the Division Roster) jdsmjackson@sbcglobal.net. Members can also hand the survey to John at the next meeting.

Help Needed

Troy, MI: Marv Linke needs help manning a table at the upcoming Gratiot Valley train show for **Division 8**, November 1. Please contact Marv at marv11@comcast.net

New Division

Millersburg, IN: It's official, the "Michigana" Division has become a part of the Midwest (not the North Central) Region of the NMRA. The superintendent is Jim Six with Mark Plank as Chief Clerk and Paymaster. You can view their activities via Yahoo Group:

http://groups.yahoo.com/group/NMRA_Michiana_Division/members?start=21&group=sub

Meeting: September 17, 2009

Scribed Needed

Troy, MI: The Board of Directors is STILL looking for a volunteer scribe (reporter) to convey Division 8 news to the NCR Hot Box. The successful candidate will proudly serve the needs of the Region and Division. Candidates may apply to any Board member

Problems Reading .pdf Files

Troy, MI: Several members report problems reading .pdf files such as the maps for the layout tours. I suspect that since many members were able to read / view these files, that the problem may be the use of a version Adobe older than Version 9. Members should download the free Adobe Reader, ver. 9. If this doesn't cure the problem, please email me [wegawthrop@aol.com] and we can further investigate.

No Division 8 Meeting In October

Troy, MI: There will be no Division 8 meeting October. This is due to the North Central Region Convention October 15 – 18.

Contest on!

Troy, MI: Al Crowley announced the model of the quarter for the 4th quarter of 2009. Al made available layout print of the St. Paul, Minnesota Flag Stop for contestants to use in constructing this building.

The contest rules are:

1. The flag stop may be built in any scale
2. The base may not exceed 40 x 50 scale feet
3. Any material may be used for the wall and roof.
4. Walls are lap siding boards and scalloped shingles.
5. Standard parts can be used.
6. Platform size may be reduced

Contestants are to bring their completed models for judging at the **January 21st 2010** Division 8 meeting.

[Plans for the flag stop are given in a separate document accompanying this newsletter.](#)

SHOW & TELL

Meeting participants presented a wide array of items during show and tell. The topic was anything related to power supplies. Of course, current projects were also fair game.

Dave Thorton brought in a homebrewed power supply formerly used by the Detroit Model Railroad Club. The power supply is



conservatively rated at 20 volts / 15 amps and uses a Variac (voltage divider-type) throttle for super smooth operation.

Rick Ware brought a Crest 18 volt / 10 amp DC power supply that he uses as a backup for his and Marie's outdoor G-scale layout.



Jim Zinser offered a DC power supply with multi-voltage outputs. This is a great replacement for the “wall-warts.” Jim uses this power supply for all kinds of testing on his workbench.



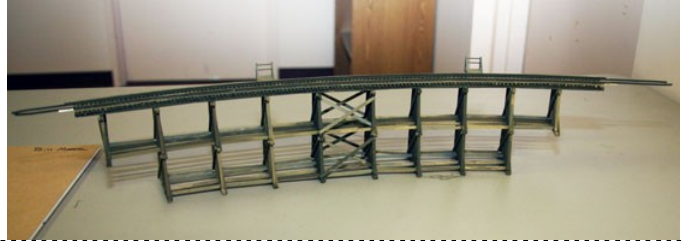
Roger Trey brought in an MRC “Throttle Pack” circa 1970’s. He uses this power pack and a sister to power switch machines on his layout.



Peter Jacobson brought in a power supply detailed inside and out scaled to HO. This one sports three coal-fired furnaces with turbines. The model was designed by Peter based on an exhaustive search of power plants.



Bill Gawthrop offered one of his current projects (a work-in-progress). This one is an HO scale framed bent trestle which will carry the Coal & Coke mainline over a ravine near Alexander, West Virginia. The curvature is 36” radius. The trestle is built from dimensioned lumber, pine ties and balsa. Rails are code 83 and the guard rails are code 70.



Jim Dennis is using this “older model” power supply for powering LED’s and cooling fan for the DCC system.



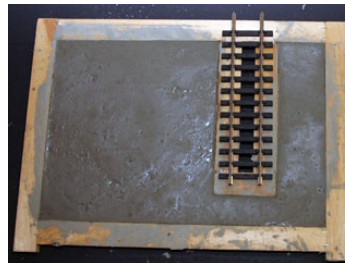
Joel Goldberg brought an HO scale corn crib and an outhouse (privy) in N scale. Joel scratchbuilt the corn crib after one he saw and measured in Montana. Joel got the outhouse while attending the N-scale Convention in Portland, OR.



Jerry Shanek brought in a Crest 22V-5A power supply that he uses to power his AristoCraft trains.

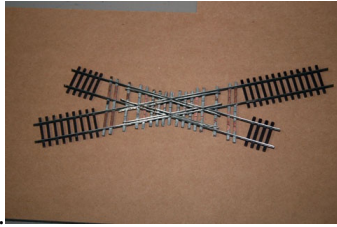


Jerry Shanek also brought in his entry to the quarterly modeling contest. Unfortunately he ran out of time building the model. He therefore is presenting it as a current (work-in-progress) project.



This is the (real) concrete foundation. The scale is G.

Bill Moore displayed a scratchbuilt 30-degree track crossing in HO scale. He used a combination of methods from Marv Linke and Fast Tracks



Ken Scherer displayed photos of a tree-line and building flats painted on a backdrop, his current project in HO scale.



Thanks to all who participated in Show and Tell w.e.g

Please forward any and all erratta to Bill Gawthrop, Car House editor at wegawthrop@aol.com. Virtual tomatoes are also welcome..... it's part of our quality improvement.....

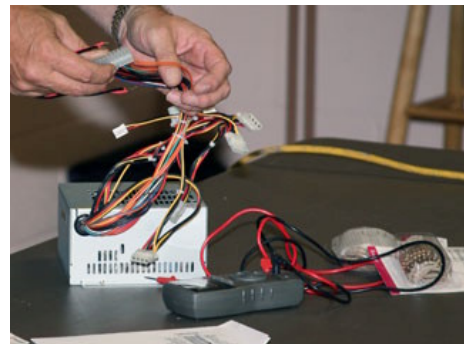
This Month's Clinic

Peter Jacobson presented "PC Power Supply Conversion" a how-to clinic on turning a computer power supply into a power supply for your model railroad.



Peter stepped through the conversion process first by illustrating the steps in a slide presentation. He then proceeded to demonstrate the conversion with an computer power supply and conversion parts.

In addition to the process, Peter also suggested a bill of materials for the conversion project.



Copies of the the presentation can be obtained via email request to Peter at paj@absoft.com

Upcoming Events

1. **October 4, 2009:** Trainorama Flea Market and Show, Costick Community Center, Farmington Hills, MI
2. **October 4, 2009:** Great Lakes Live Steamers, rides in the park, Royal Oak, MI
<http://www.greatlakeslivesteamers.org>

November's Clinic

Rememrences from the NMRA National Convention by Larry Wolohan and Jim Zinzer

Upcoming Events, continued from page 4

3. **October 15 – 18, 2009:** NMRA North Central Region Convention, Ft. Wayne, IN
<http://www.hoosierdiv3nmra.org/09/index.html>
4. **November 1, 2009:** Gratiot Valley Train Show & Sale at the Gibraltar Trade Center, Mt. Clemens, MI <http://www.gvrr.org/11-09f1.htm>
5. **November 7, 2009:** The 10th Michigan Railroad History Conference will be held at the Cascade Manor House, Jackson, Michigan.
<http://www.michiganrailroads.com/MRHC/MRHC-Home.htm>
6. **November 14 / 15 and November 27 /28 /29:** Detroit Model Railroad Club Open House, Holly, MI <http://www.dmrcc.org>
7. **January 17, 2010:** Paris Junction Model Train Show, sponsored by WOD /NFR / NMRA, <http://www.londongrs.com>

Division 8 Board of Directors

Superintendent: Jerry Shanek
Jerry_shanek@yahoo.com
Secretary: Bill Gawthrop
wegawthrop@aol.com
Treasurer: John Jackson
jdsmjackson@sbcglobal.net
Director: Allen Crowley
Crowley1127@yahoo.com
Director: Curt Danielewicz
CDanielewicz@ameritech.net

Next Meeting's Show and Tell

The topic for next (November) meeting's Show and Tell is:
Anything from the NMRA National Convention in Hartford, CT or the North Central Region Convention in Ft. Wayne, IN. Of course, you may bring in your prized current project in lieu of something from the convention(s).

SURVEY follows on next page.

**DIVISION 8 SURVEY
LAYOUT DATA**

(Data will be added to the current Division 8 roster and provided to membership)

Name _____

Layout Road Name _____

Scale _____

Era Modeled _____

Layout Theme _____

Modeling (check items that most directly applies):

 Prototype Railroad (specific to location and date) _____

 Prototype Railroad (freelanced to a geography) _____

 Fictional Railroad (specific to location and date) _____

 Fictional Railroad in fictional geography _____

Please detach and send to John Jackson.

Thank you for your input. Div. 8 BOD