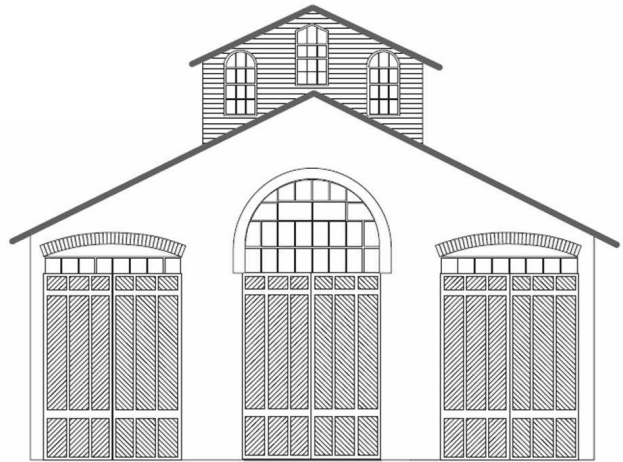


# CAR HOUSE



Website:  
<http://div8.ncr-nmra.org>

Website:  
<http://www.nmra.org/>

## THE NEWS

SEPTEMBER 20, 2012

### We have a Winner

Troy, MI: Larry Wolohon (right) is the winner of the Model of the Quarter for the third quarter of 2012 with his O scale model of an REA delivery truck.



### Model of the Quarter Entries



### Division 8 Roster

Troy, MI: The 2012 roster of Division 8 members is in "final edit" prior to being distributed to the membership. The roster content includes member name, email address, telephone number and model railroad scale and name. An example roster was passed around at the meeting. The roster will be distributed along with the October *Car House*.

### New Hobby Shop in Troy

Troy, MI: Empire Hobbies has opened its doors 3278 Rochester Road, Troy. This shop is owned by the same family who owned Merri-Seven Hobbies [now closed] in Livonia.

Empire has a full line of trains in all scales plus hobby supplies and models in other subjects. They are open from 11 to 7 M - F, and 11 - 6 on Saturdays.

Empire offers discounts to members of the NMRA upon proof of membership.

### Guests

Troy, MI: Guests at tonight's meeting included the "Car Knockers" from Division 6.

Mark Ellis      Tom Kosta      Jim Hockenberger  
 Doug Malaznik   Bill McMillan   John Bopp

# CAR HOUSE

September 20, 2012

## THE NEWS

### Model of the Fourth Quarter 2012

Troy, MI: The Model of the Fourth Quarter Contest will feature another vehicle. This time the vehicle will be a piece of construction equipment.



Here are the rules:

1. The equipment may be scratch-built or kit-bashed.
2. The equipment may be in any scale.
3. The application of the [prototype] equipment may be on-road or off-road.
4. The equipment must be painted.

*Suggestions* for “extra” credit:

- Window glazing
- Driver / occupants
- Weathering

Entries will be judged at the December 20, 2012 Division 8 meeting.

### 2013 Convention News

Troy, MI: The committee for for the North Central Region Convention 2013, “North Central Crossings” is moving forward. Budgets are being formulated at this point. Immediate actions in addition to the development of the budgets include:

- Firming up the number and size of modular layouts that will be set up at the Troy Community Center.
- Development of the content for the convention flyers
- Development of the artwork for the convention volunteer tee shirts
- Development of the plans for the Silent Auction that incidentally will be run by Chuck White of Fort Wayne.

### Presentation to Troy Historical Society

Troy, MI; Dave Thornton reports that his presentation on model railroading was a hit with the 50+ attendees at the August meeting of the Troy Historical Society

### Erratta

Troy, MI: George VanDuyne’s name was misspelled in the August issue of the Car House.

## Show & Tell

### Figures or your favorite current project

**Terry Bossick** brought in an O scale crew car for track maintenance on trolley lines. The model is by Kato.



**Dan Lewis** displayed a Russell snow plow in N scale. The model started as a Walthers kit to which Dan detailed and repainted the plow. The model features free-standing grabs.



# CAR HOUSE

September 20, 2012

**Rad Jones** brought in a collection of N scale MOW equipment produced from kits of Railway Express Miniatures. Per Rad, several pieces of MOW used at Campbell Bridge on the layout were damaged when the layout was moved. The scene depicted the bridge being moved. The models have since been repaired.



**Phil Doolittle** displayed the “good deals” that he received from Walthers. These 4 cars are part of Phil’s Amtrak “rainbow train” of the early 1970’s



The cars are HO scale.

**Larry Wolohon** brought in track laying tools for O scale including:

- Fast Track #6 turnout jig
- Points holder
- Points jig
- Tie breaker



**Marv Linke** offered a Kadee spiker for spiking ties to rail. This spiker was made by Kadee but is not longer available. This example is marked as #42 and from the 1950’s.



**Phil Kenyon’s** current project is assembling a manual turnout control by Fast Track. The control body is wood.



**Fred Cosgrove** offered photos that he obtained from Google Earth of Frankfort, KY an area that he is considering modeling.



**Jerry Shanek** offered a pair of prototype rail clips. The clips along with a threaded bar are used to keep the track in gauge at places (turnouts, curves) where trains tend to spread the rails.



# CAR HOUSE

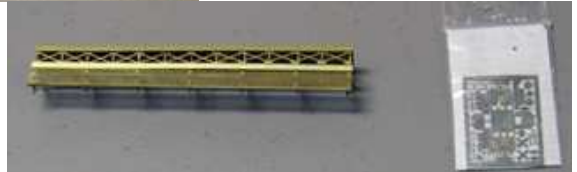
September 20, 2012

**Jim Sieradzinski** displayed an HO scale weed sprayer, MOW box car, and crew /tool car



**Thomas Pelle** brought in Z scale models:

- Speeder
- #2 turnout
- Brass deck girder bridge which he is in progress of building from a kit.



**George VanDuyne** offered a rotary snow plow and tender in HO scale. The plow is a product of Athearn while the pedigree of the tender is unknown. George explains that the tender needs an oil tank but so far, he has only cut the hole for the tank.



**Bill Gawthrop's** current project is weathering rolling stock for his HO scale Southeast Michigan Free-Mo collection.



**Gene Kome** brought in unpainted HO scale propane tanks from JL Innovations. Gene also brought in a photo of an experimental open hopper car cover to be used to control coal dust.



**John Jackson** brought in felt-tip markers in track colors (tie brown, rail brown, rust) by Testors. These markers contain paint and are easy to use to paint rails in place.



Please forward any and all erratta to Bill Gawthrop, Car House editor at [wegawthrop@aol.com](mailto:wegawthrop@aol.com). Virtual tomatoes are also welcome..... it's part of our quality improvement.....

**CAR HOUSE**

September 20, 2012

<b>This Month's Clinic</b>	
<p>Dave Thornton presented month's clinic on hand-laying turnouts. During this interesting clinic Dave presented:</p> <ul style="list-style-type: none"> <li>◆ Rationale for hand-laying turnouts</li> <li>◆ Tools and supplies</li> <li>◆ General Tips</li> <li>◆ His experiences hand-laying turnouts in O scale for: <ul style="list-style-type: none"> <li>○ His home layout</li> <li>○ The Detroit Model Railroad Club.</li> </ul> </li> <li>◆ Examples of his work.</li> </ul>	
<b>Upcoming Events</b>	<b>October Clinic</b>
<ul style="list-style-type: none"> <li>➤ <b>Trainorama</b> by Redford Model Oct. 28: Railroad Club, Costick Community Center, Farmington Hills, <a href="http://www.redfordmodelrailroadclub.com">www.redfordmodelrailroadclub.com</a></li> <li>➤ Nov. 3-4: <b>Gratiot Valley Train Show &amp; Expo</b>, Gibraltar Trade Ctr., Mt. Clemens, <a href="http://www.gvrrt.org">www.gvrrt.org</a></li> <li>➤ Nov. 10-11,23-24-25: Open House, <b>Detroit Model Railroad Club</b>, Holly, MI, <a href="http://www.dmrrc.org">www.dmrrc.org</a></li> </ul>	<p>Dan Lewis will present "Operations from the Viewpoint of the Host" as the clinic for September.</p>
<b>Division 8 Board of Directors</b>	<b>Next Meeting's Show and Tell</b>
<p>Superintendent: John Jackson <a href="mailto:jdsmjackson@sbcglobal.net">jdsmjackson@sbcglobal.net</a></p> <p>Treasurer: Paul Runyan <a href="mailto:prrdi61@sbcglobal.net">prrdi61@sbcglobal.net</a></p> <p>Secretary: Bill Gawthrop <a href="mailto:wegawthrop@aol.com">wegawthrop@aol.com</a></p> <p>Director: Saul Kalbfeld <a href="mailto:fjgbus@gmail.com">fjgbus@gmail.com</a></p> <p>Director: Jerry Shanek <a href="mailto:Jerry_shanek@yahoo.com">Jerry_shanek@yahoo.com</a></p>	<p>October Show and Tell will be anything operations. You may bring your current favorite proeject as well.</p>