

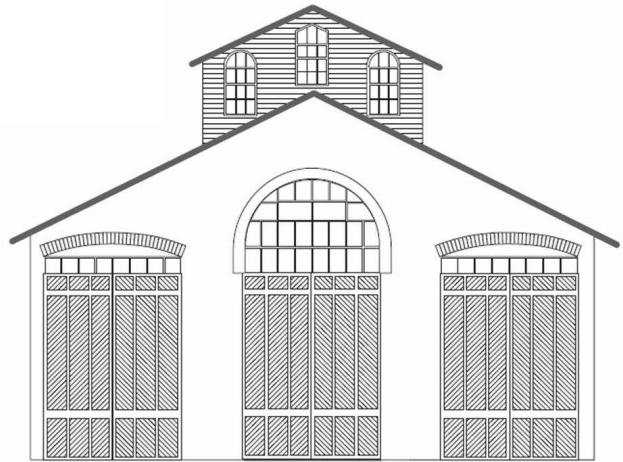
# CAR HOUSE



Website:  
<http://div8.ncr-nmra.org>



Website:  
<http://www.nmra.org/>



## THE NEWS

SEPTEMBER 19, 2013

### Model of the Fourth Quarter 2013

Troy, MI:



We continue with the theme - models of the Quarter in 2013 featuring a scene. The fourth quarter of 2013 Model of the Quarter features **an industrial scene**.

Here are the rules:

1. The scene may be in any scale.
2. The scene must be transportable to the meeting. In other words the judges must be able to judge the scene in person.
3. The minimum size for the scene is:
  - 3.1. 6" x 6" in N or smaller scale
  - 3.2. 12" x 12" in HO scale
  - 3.3. 18" x 18" in S or O scale
  - 3.4. 24" x 24" for scales larger than O
4. The scene must contain:
  - 4.1. "Vegetation" in the form of ground cover and may also include bushes, trees, "water," etc.
  - 4.2. An industrial building or buildings.

*Continued on next page*

### Convention News

Troy, MI: Newsy items from the 2013 NCR Convention Committee include:

1. Plans are being finalized for the Convention.
2. As soon as you register for the Convention, you can sign up for slots in the operating sessions. Use the Convention website <http://www.ncr-nmra.org/event/north-central-crossing-2013-ncr-convention> to make your choices. Deadline for signup is October 1, 2013!
3. Tour Layouts: 30 layouts will be open during the Convention. Details and photos appear on the Convention website.
4. Deadline for buying a shirt when registering for the Convention is October 1.

### New Webmaster!

Troy, MI: George Van Duyne is Division Eight's new Webmaster! Congratulations George. He will be taking over the reins from Marv Linke over the next several weeks.

# CAR HOUSE

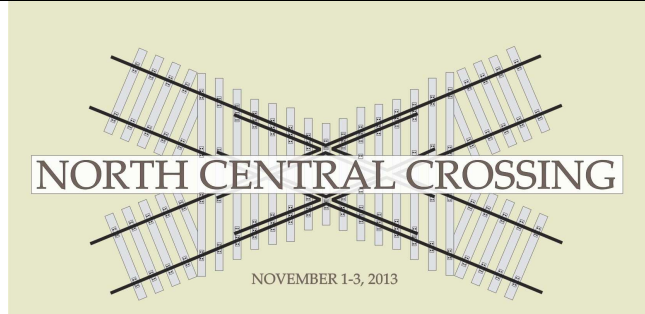
September 19, 2013

## THE NEWS

*Continued from the previous page*

- 4.3. A railroad track or tracks fully ballasted and weathered.
- 5. Elements in the scene may be either built from scratch, kit-built, or kit-bashed.

**Judging of entries will be conducted at the upcoming December 19<sup>th</sup> meeting.**



**Don't miss out! Register now for a great convention in Troy, Michigan**

## Show & Tell

This Month's Theme was Anything Southern Railway or Your Current Favorite Project

**Dan Lewis** (on guitar) and **Phil Doolittle** (on mandolin) perform the song, "Green Light on the Southern" written by Norman Blake. The lyrics describe railroading on the Alabama Great Southern Line.



**Bill Gawthrop** brought in an HO scale Southern Box Car (with "green light herald.") Bill built the model from a Walthers kit about 30 years ago. He added Kadee couplers and metal wheels.



**Larry Wolohon** displayed an HO scale stock car which he built from a Northeastern kit.



# CAR HOUSE

September 19, 2013

**Walt Connell** offered an Alco RS-3 decorated for the Southern. The model is in HO scale by Atlas.



**Rick Ware** brought in a Southern Railway bulkhead flat car with plastic pulpwood load. The HO scale model is by Tyco.



**Tom Weiss** presented a Southern SW1500 in HO scale. The switcher is a work-in-progress.



**Greg Rich** brought in an HO scale 1914 IHC truck. Greg built the model from a collection of Jordan parts from his scrap box. He found a photo on the Internet of this truck.



**Saul Kalbfeld** brought in HO scale models:

1. Southern 60' all-door box car
2. Southern 60' outside braced box car
3. Southern "Big John" 200T covered hopper.



**George Anderson** brought in a Southern 3-bay hopper with a "Freddie Light."



**Paul Runyan** displayed an "elderly" 50' box car decorated for the Southern Rwy. He built the model from an Athearn "blue box" kit.



# CAR HOUSE

September 19, 2013

**Jim Zinser** brought in an HO scale box car decorated for Ohio Southern and an HO scale box car decorated for Southern Pacific.



**John Jackson** displayed a Special Instruction Manual for the Potomac Yard circa 1950 and a Southern Railway Conductor & Trainmen Time of Return Log Book. The Potomac Yard in Alexandria, VA was served by the Southern, ACL, PRR, B&O, RF&P, and C&O.



**Vince Robinson** offered vintage models in O scale.



**Tom Pelle** displayed a Z scale Mikado decorated for the Southern Railway.



**Bill Moore** presented a current project, the Rumford Press printing plant in HO scale.





# CAR HOUSE

September 19, 2013

**Phil Kenyon** displayed a Southern Pacific switcher in N scale.



**Dave Thornton** offered photos from the UP of Michigan. The photos include images from the Quincy Mine and the ferry "Badger."



Please forward any and all erratta to Bill Gawthrop, Car House editor at [wegawthrop@aol.com](mailto:wegawthrop@aol.com). Virtual tomatoes are also welcome..... it's part of our quality improvement.....

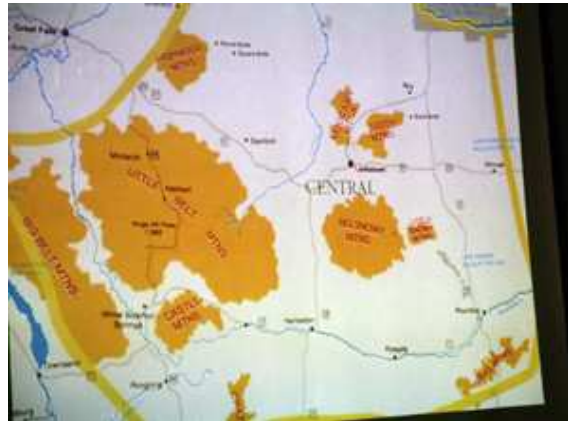
# CAR HOUSE

September 19, 2013

## This Month's Clinic

As a nuance of software and hardware gremlins, the regularly scheduled clinic by Larry Wolohon was postponed until October.

This month's clinic was given by Dan Lewis and featured Dan's research for his North Montana Line of the Milwaukee Road, in N scale. Dan has visited the sites along the prototype and had the opportunity to interview a number of railroad employees from the region.



### Upcoming Events

- **Oct. 27:** Trainorama, Costick Community Ctr., Farmington Hills, MI
- **Nov. 1-3:** NCR Convention, Troy, MI
- **Nov. 2-3:** Gratiot Valley Train Show & Sale, Gibraltar Trade Ctr., North, Mt. Clemens, MI
- **Nov. 9-10:** Detroit Model Railroad Club Open House, Holly, MI

### October Clinic

Larry Wolohon will review the activities and events of the 2013 NMRA Convnetion in Atlanta

### Division 8 Board of Directors

Superintendent: John Jackson  
[jdsmjackson@sbcglobal.net](mailto:jdsmjackson@sbcglobal.net)  
 Treasurer: Paul Runyan  
[prrdi61@sbcglobal.net](mailto:prrdi61@sbcglobal.net)  
 Secretary: Bill Gawthrop  
[wegawthrop@aol.com](mailto:wegawthrop@aol.com)  
 Director: John Gavasso  
 Director: Jerry Shanek  
[Jerry\\_shanek@yahoo.com](mailto:Jerry_shanek@yahoo.com)

### Next Meeting's Show and Tell

Anything Milwaukee Road or your current favorite project.