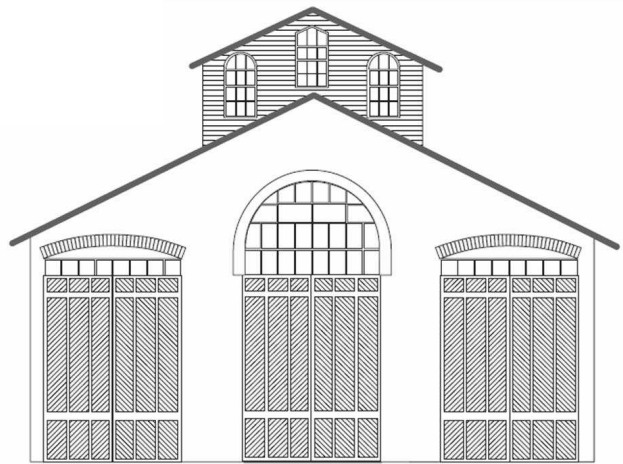


# CAR HOUSE



Website:  
<http://div8.ncr-nmra.org>

Website:  
<http://www.nmra.org/>



## THE NEWS

SEPTEMBER 18, 2014

### Model of the Fourth Quarter 2014

Troy, MI: The Model of the Quarter Contest returns with the Fourth Quarter Challenge. The Model of the Fourth Quarter 2014 is Hi-Rail vehicle. The Hi-Rail vehicle is also known as a road-rail vehicle and covers any vehicle that can operate on both road / highway and railroad tracks.

The rules are as follows:

1. The vehicle cannot start from a ready-to-run model.
2. The vehicle **MUST** have the capability to run on railroad track.
3. The vehicle model may be built in any scale.
4. The model can be either
  - 4.1. Scratch-built OR
  - 4.2. Kit-built OR
  - 4.3. Kit-bashed
5. The model must be painted and lettered
6. The model may be operational (moves under its own motorized power) or non-operational (non-powered, but must roll on rails).
7. Entrants may submit documentation to further explain the features of their models.

### Examples:



Entrants will be judged at the December meeting of Division 8.

### Banner

Troy, MI: The membership of Division 8 gave its okay to purchase a new banner. This banner will be used to promote the division at shows. Brooks Stover and Ken Scherer will coordinate the design and purchase of the new banner.

### Thanks

Troy, MI: Many thanks to John Jackson for subbing for met at the September.

*Bill Gawthrop*

# CAR HOUSE

September 18, 2014

## Revised Division 8 Web Page

Troy, MI: George Van Duyne reports that the "Layouts" web page is now established on the Division 8 web site (<http://div8.ncr-nmra.org/>). The Layout page is accessed by clicking on that option in the menu at the top of the Division 8 home page. Each layout entry lists the layout name, size, scale, and amount of scenery completed. There is a section for a description (to be written by the layout owner) and area for several photos. Photos are displayed in a small "thumbnail" format. Clicking on the thumbnail will display the photo in full size. Finally, there is space for an optional link to a layout web page or online photo album if one exists.

Note that the layout owner's name or address is not listed to ensure privacy. To submit your layout for the layout page use the "Suggestions" link or send an email to [info@div8.ncr-nmra.org](mailto:info@div8.ncr-nmra.org). Comments or suggestions on the format of the Layouts page also welcome.

## NCR Convention, 2015



Fort Wayne, IN: The NCR's 2015 Convention will be in Fort Wayne next year, from October 29th to Nov 1st. Our main feature will be Prototype TOURS with NINE (9) different destinations for a total of FOURTEEN (14) tours. Some of the places we're going include: Norfolk Southern's Dispatching Center in New Haven, Indiana North Eastern's Locomotive Facility in Ashley-Hudson, Bungee's Soybean Processing Plant in Decatur, Triple Crown Services' Road Railer Facility, and the Allen County Public Library for a 3D printing demo. Our plans also include: A complete slate of clinics (with both "hands on," and formal presentations), layout tours, operating sessions, on site model railroads displayed, silent auction, door prizes, model contest, company store, and a Special Guest Speaker for our Sunday Brunch and Awards presentation. We'll be offering a Convention shirt and two (2) convention cars. One will be another modern hopper car with INE markings. We're also planning a steam era wood sided box car lettered for the GR&I. We hope to have sets with multiple numbers. A video describing our convention can be downloaded from our web site: <http://div3.ncr-nmra.org>

# CAR HOUSE

September 18, 2014

## Show & Tell

This Month's Theme anything from an NMRA Convention

**Fred Cosgrove** brought in a wood refer from the 1980 NMRA Convention in Orlando. This HO scale car was made by Athearn, customized by Con-Cor.



**Rick Ware** offered an HO scale double door box car from the NMRA "Great Lakes Express" Convention in Detroit in 2007.



**Greg Rich** fabricated two locomotives in HO scale from Mantua Generals.



Greg built #33 first with a new motor, decoder and LED light. He built #32 next with the same details except he used a Tsunami decoder and ZIMO surge cube. He also added tungsten weights to assist in tractive effort.

**Larry Wolohon** offered an O scale CRIP gondola that he lettered and weathered per RPC #28 [magazine].



Larry also brought in a copy of RPC #28, a brochure from Steam Railroad Institute - Train Expo 2014 and a timetable #79 from the Cleveland Convention.



**George Anderson** displayed a Z-braced rock car in On30 by Prairie Locomotive Works in Indiana.



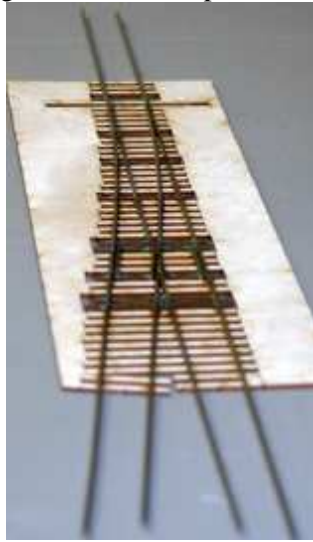
**David Cook** offered an oil house in HO scale.



# CAR HOUSE

September 18, 2014

**Rad Jones** brought in an HO scale turnout that he scratch built at a clinic using a Fast Trac template.



**Phil Kenyon** brought in Z scale hoppers lettered for the Ann Arbor Railroad. He also offered an HO scale Indiana Northeastern covered hopper.



**Ken Scherer** brought in a Railroad Graphics CD and a pen from PECO.



**Tom Dart** offered a beautiful brass Shay in On3 scale. The locomotive contains DCC with sound. It is custom painted and lettered for the McPhee Lumber Company [which interchanges with the Durango & Silverton.] Extras on this locomotive also include a [real] wood pile, NWSL wheel pick-ups with "Keep Alive" electronics.



# CAR HOUSE

September 18, 2014

**John Jackson** brought in:

- A set of RiteWay clamps (straight & right angle)
- Spring Mills Depot HO scale Cement Car
- Bar Mills “Bud Smiley’s Gas Stop” in HO scale
- Railroad Graphic CD “Backdrop Photos for Home Printer.”



**Tim Fisher** offered convention cars:

- Houston Astrorail 1989 plug-door box car kit
- Kansas City Heartland Express TOFC. The trailer has the logo of the Heartland Express Trucking Company which allowed which allowed the Convention to use the logo.



**Saul Kalbfeld** offered a track plan with two duck-unders that frustrate prototype operations.



**Dan Lewis** displayed the Milwaukee Road station of Great Falls, Montana in N scale. Dan scratch-built the station from photos.



# CAR HOUSE

September 18, 2014

**Mark Mincek** displayed a kit that he intends to build. It's the Fyfe Building the prototype of which is located at the corner of Adams and Woodward Avenues. The kit includes 3D printed parts.



Please forward any and all erratta to Bill Gawthrop, Car House editor at [wegawthrop@aol.com](mailto:wegawthrop@aol.com). Virtual tomatoes are also welcome..... it's part of our quality improvement.....

Upcoming Events	October Clinic
<ul style="list-style-type: none"> <li>➤ <b>Oct. 26:</b> TRAINORAMA, Costick Activity Center, Farmington Hills, MI</li> <li>➤ <b>Nov. 1&amp;2:</b> Gratiot Valley Show &amp; Sale, Gibraltar Trade Center, Mt. Clemens, MI <a href="http://www.gvrr.org/images/current_flyer.pdf">http://www.gvrr.org/images/current_flyer.pdf</a></li> <li>➤ <b>Nov. 8&amp;9, Nov. 28-30:</b> Detroit Model Railroad Club, Holly, MI <a href="http://www.dmrcc.org/">http://www.dmrcc.org/</a></li> </ul>	<p>The clinic for October is hoppers from the copper country in the upper peninsula of Michigan by George Anderson.</p>
Division 8 Board of Directors	Next Meeting's Show and Tell
<p>Superintendent: John Jackson <a href="mailto:jdsmjackson@sbcglobal.net">jdsmjackson@sbcglobal.net</a></p> <p>Treasurer: Paul Runyan <a href="mailto:prrdi61@sbcglobal.net">prrdi61@sbcglobal.net</a></p> <p>Secretary: Bill Gawthrop <a href="mailto:wegawthrop@aol.com">wegawthrop@aol.com</a></p> <p>Director: John Gavasso</p>	<p>The October Show and Tell will be anything from the upper peninsula &amp;/or current project.</p>