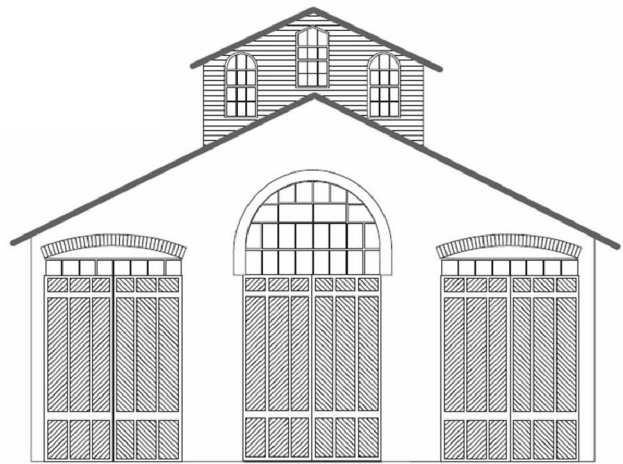


CAR HOUSE



Website:
<http://div8.ncr-nmra.org>

Website:
<http://www.nmra.org/>



The News

October 15, 2015

Model of the Fourth Quarter in 2015

Troy, MI: The subject for the Model of the Fourth Quarter in 2015 is a pedestrian bridge. This bridge can be any of a variety of bridges that allow pedestrians a pathway over a river, change in terrain or another right-of-way. The model can represent a prototype from any era.

The rules are as follows:

1. The structure cannot start from a ready-to-run model.
2. The structure model may be built in any scale.
3. The model can be either
 - 3.1. Scratch-built *OR*
 - 3.2. Kit-built *OR*
 - 3.3. Kit-bashed
4. The model must be painted.



Entrants will be judged at the December 2015 meeting of Division 8.

New Screen for Troy Christian Chapel

Troy, MI: The Chapel Board is now considering the proposal of Division 8 to purchase a new movie screen

Name of Division 8

Troy, MI: Eleven names have been proposed as “replacement” for “Division 8.” Voting for the name change will take place at the Board of Directors meeting in December. Following that vote, the BOD will submit its request to the North Central Region BOD for action.

Guests

Troy, MI Guests at tonight’s meeting included; Dewey Norton, Ken Chick, (?) Yohe, and Larry Wright.

Website in Need of Layout Photos

Troy, MI: George Van Duyne requests that members submit photos of their layouts for display on the division’s website. Contact George directly. Let’s freshen up our website.

Remote Control for Data Project

Troy, MI: The Division now has a remote control for its data projector. Thanks to Marv Linke for making this happen.

Railfanning anyone?

Chop nose GP9 in Willard, OH, Oct 26.
 Photo by W. Gawthrop



CAR HOUSE

October 15, 2015

From the Super

I use a lot of acrylic paints. I use Polly Scale, and am investigating various replacement paints now that it is no longer made. I use many “craft paints” and am investigating making “model paints” from them as described in a recent RMC article – that is as soon as I can find “Liquitex Airbrush Medium”. All the art stores I’ve checked seem to be out of it. I use acrylic artist’s paints when I paint “art” pictures on canvas. One of the greatest arguments for acrylic paints is that they clean up so easily with water.

At the art center where I take painting lessons, there is a big red bucket with a lid labeled for disposal of oil paints and oil painting fluids like linseed oil, turpentine, mineral oil, etc. The bucket is also labeled “Empty Every Night!” Looking at that bucket got me thinking: if they take so much care to dispose of oil paints, what is happening to the acrylic paints we use? We wash them down the drain.

Acrylic paints are plastic. Does the idea of plastics in the water give you pause? It does me. Have you heard of the huge area of the Pacific Ocean where plastic bottles and other plastic debris have been collecting for several years? It’s a serious problem. But that’s relatively big pieces that people and fish can see in the water,

right? What about the plastic in paints? Well, it turns out I have a friend, Sam, who in addition to being an excellent modeler is by training and profession a civil engineer who has expertise in waste disposal. He’s been a consultant on some very impressive development projects. I figured he ought to know a bit about this issue, so I asked him. He says the microscopic particles of plastic in the paints are among the hardest to filter out in the waste disposal water treatment process. That means they find their way into the rivers and ultimately the ocean. As a result he takes some precautions. When he finishes with a paint, he cleans as much paint from the brush as possible with a paper towel before washing the brush. He does the same with any leftover quantity of the paint he has poured out to use. Paper towels end up in landfills or incinerators with the paint dry, so the plastics in that paint generally don’t enter the water.

I have adopted his approach to cleanup as much as I can, and I urge you to do the same. It may not make very much difference, but it’s easy, so let’s make a small contribution to a cleaner hobby.

Phil Doolittle

Show & Tell

This Month’s Theme was Structures

John Gavasso brought in an HO scale saw mill diorama.



Paul Runyan brought in a current project, much delayed. A Campbell kit to build an HO scale church.



CAR HOUSE

October 15, 2015

Rick Ware offered a yard office and attached sheds. He used a partial boxcar and styrene sides and roof sheets for sheds based on an article from an old model railroading magazine of a now-forgotten name and date. The structure was painted, decaled, and weathered with chalks.



Phil Doolittle displayed "Tower House." He built this HO scale model from a Laser Art kit. Phil says that he always likes to think that his HO scale people have a place to live.



Bill Moore brought in an HO scale model of the Fitchburg, Mass. Depot. Bill built the model using Walthers "Milwaukee Street Depot."



Dave Thornton offered an O scale Pennsy GLA hopper car which he is in the process of converting this Lionel 3-rail model to a 2-rail model. Detail is outstanding as Lionel has come a long way from its modest models of the past to these well-detailed products of the present.



Dave also brought in a book which covers the Pennsy's GLA hoppers.



CAR HOUSE

October 15, 2015

Mark Mincek offered an HO scale A&P Supermarket. Mark built the model from a DPM kit with modifications including a Bar Mills sign. The advertising signs are authentic to the 1956 era.



Larry Wolohon brought in an O scale crossing shanty.



George Anderson brought in "Bosch Brewing Co." [in Houghton, MI] which he converted from Campbell's "Brett's Brewery."



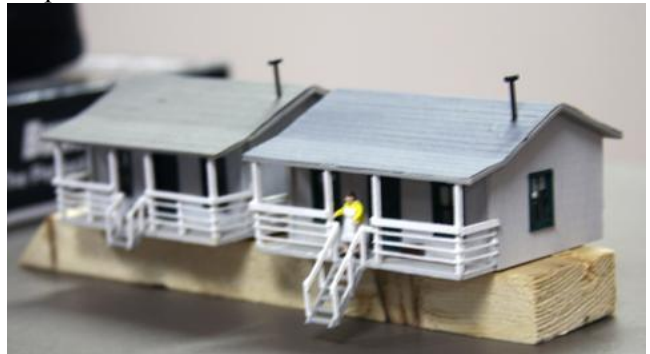
Fred Cosgrove offered an O scale, scratch-built Coney island restaurant. The building was built by Basil Motoligin and lettered for Fred Gordon Atherton as seen on the cover of "Traction Models" magazine.



Richard Kubeck brought in tools including a Differ drill chucks, zip tie maker, and Stepping tool.



George Van Duyne displayed HO scale company houses which he scratch-built from scribed siding, strip wood, photo mounting board, commercial door and window castings. George freelanced the design based on pictures found on the Internet.



CAR HOUSE

October 15, 2015

Tim Fisher brought in an HO scale model of the Santa Fe station in Quinlan, Oklahoma. Per Tim this is a non-standard Santa Fe design. Tim scratch built this model for a prior layout. He designed the station from 2 pictures and basic dimensions.



Bill Gawthrop displayed an HO scale tract house which he built from a Walthers Cornerstone kit. Bill built 16 of these houses for his Ferndale free-mo module. Bill added details and people to different houses.



Dan Lewis offered the "FentonMill" in N scale. BEAUTIFUL!



Dan also brought in tree samples, a current project.



Saul Kalbfeld offered samples of "projects gone wrong."

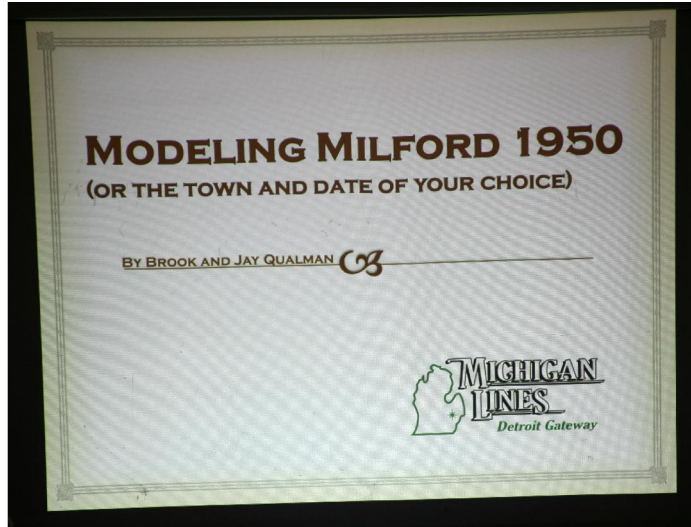


CAR HOUSE

October 15, 2015

October Clinic

Brook and Jay Qualman presented a wonderful, very informative clinic on how they researched, designed and built Milford, Michigan in 1950 in HO scale.



Upcoming Events	November Clinic
<ul style="list-style-type: none"> ➤ Oct. 29 – Nov. 1: North Central Region Convention, Fort Wayne, IN, http://www.nmra.org/region-conventions#NorthCentral ➤ Oct. 31 – Nov. 1: Gratiot Valley Trains Show, Mt. Clemens, MI, http://www.gvrr.org/ ➤ Nov. 14: South Oakland Model RR Club Open House ➤ Nov. 15: Lansing Model RR Train Show & Sale. www.lmrc.org ➤ Nov. 15: Model RR Show & Workshop, Livonia, MI 	<p>Lewis Hoy will give a presentation on traction.</p>
Division 8 Board of Directors	Next Meeting's Show and Tell
<p>Superintendent: Phil Doolittle doolittlep@comcast.net Treasurer: Paul Runyan prrdi61@gmail.com Secretary: Bill Gawthrop wegawthrop@aol.com Director: John Gavasso John Jackson jdsmjackson@sbcglobal.net</p>	<p>The topic for Show & Tell is traction or your favorite current project.</p>