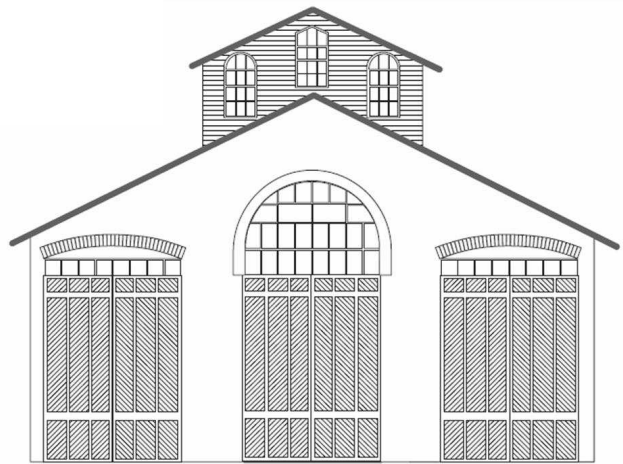


CAR HOUSE



Website:
<http://div8.ncr-nmra.org>

Website:
<http://www.nmra.org/>

THE NEWS

NOVEMBER 15, 2012

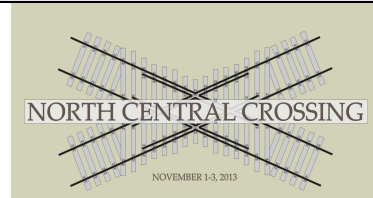
Big Boy Restaurant is Closing

Troy, MI: It is with a sad heart that I report that the Big Boy Restaurant at Dequindre and Long Lake Roads in Troy is closing its doors forever. This restaurant has been an anchor at this corner since I have lived in the area (+36 years). It has been our Division 8 gathering place after meetings for many years.

The restaurant will be open for us on the 20th at which time we can wish the owner a great future in retirement.

Judging of the Model of the Fourth Quarter 2012

Troy, MI: Just a friendly reminder that the Model of the Fourth Quarter Contest be judged at the December meeting. Bring your construction equipment.



North Central Crossings

Troy, MI: Planning for the 2013 North Central Region Convention continues.....

- ◆ Convention Content has been solidified:
 - Clinics by internationally known experts
 - Model & Photo Contests
 - Layout Tours
 - Silent Auction
 - Operating Sessions (preceding, during, and following the Convention)
- ◆ Convention Website <http://www.ncr2013.ncr-nmra.org/> is up and running. Content will be added soon
- ◆ Sales and Marketing
 - Handbills at local train shows and hobby shops (in southeast Michigan)
 - In-person presentations to
 - Meetings of NCR Region Divisions beginning March 2013)
 - Meetings of Model Railroad Clubs
- ◆ Solicitation of contributions to the Convention
 - Model railroad product vendors
 - Local hobby shops
 - Local commercial establishments
 - NMRA members

CAR HOUSE

November 15, 2012

Show & Tell

Steam or your favorite current project

Phil Doolittle brought in three books on steam:

1. 1897 New Cateschsh of the Steam Engine
2. 1952 The Steam Locomotive ion America (Alfred Bruce)
3. 2005 Canadian National Steam (Kevin J. Hollam)



Gene Kome brought in fours books on steam locomotives:

1. Erie USRA Heavy Pacifics
2. NYO&W Class Y2 Mountains
3. NYO&W 2-8-0 Consolidations
4. Santa Fe Locomotive Development



Marv Linke offered a current project. The installation of DCC and sound decoder in an N scale Kato RSC-2. Marv milled the frame for the circuit board and speaker. Mysteriously, Marv lettered the locomotive for the Milwaukee Road.



Rick Ware displayed a Bachmann Class B, 25 ton Climax in G scale.



George Van Dyne brought in an HO scale light Pacific by Bowser. George built this locomotive in January, 2012. He painted and weathered the locomotive using Polly-S paint. George also installed a TCS decoder.



Joel Goldberg displayed an HO scale 1950-60 era gas electric that he built from a kit by Walthers. He is in the process of updating the model.



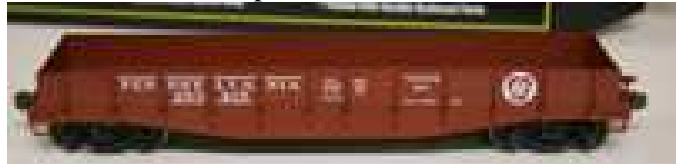
CAR HOUSE

November 15, 2012

Jim Dennis offered a by Indiana Harbor Belt 3-cylinder 0-8-0. Jim built this HO scale locomotive from an AHM kit.



Larry Wolohan displayed an O scale gondola. Larry added Kadee couplers and painted the trucks and wheel sets. The model is a product of Weaver.



Jim Zinser brought in:

1. An HO scale 2-8-2 lettered for the Soo. This brass model is by Division Point.



2. A Shay which Jim kit-bashed and super detailed from a Roundhouse kit. This HO scale model has a full cab interior with opening firebox door.



Bill Gawthrop offered a 2-truck, 55 ton Climax in HO scale. Bill weathered the model by Spectrum and added real coal to the coal bunker. Along with the model Bill showed a photo he took in 1960 of the prototype sitting in the weeds in Ellamore, West Virginia. He also showed a photo of the restored Climax now operating on the Durbin and Greenbrier Railroad.



Ron King displayed a 0-8-0 decorated for the Erie Railroad. Ron added water hoses, cab curtains and sunshades and new headlights to this HO locomotive by Life Like. Ron weathered the locomotive as well.



Paul Runyan brought in a Nickel Plate Road Berkshire in HO scale. The locomotive is a product of Proto 2000.



Phil Kenyon brought in a Mallet letter for the Pennsylvania.



Dan Lewis brought in an N scale 2-8-0 "Consolidation" which he weathered.



CAR HOUSE

November 15, 2012

Terry Bossick displayed an HO_n30 scale model of an Orenstein & Koepfel tank locomotive intended for industrial or manufacturing use.



John Gavasso offered an HO scale 4-6-0 "Ten Wheeler" circa 1900. This locomotive is lettered for the Lake Shore & Michigan Southern. It has 80" drivers and pulled the "Empire State Express."



Fred Cosgrove offered a 2-4-4 Forney in On30 scale. This outside-frame locomotive is lettered for the Sandy River & Rangley Lakes RR. The model has DCC and sound.

John Jackson displayed a cement plant he is building in HO scale. He is using a Walthers Cornerstone Glacier Gravel kit as a basis for the preliminary grind building and electrostatic precipitator building. John used a Pikestuff single stall engine house as a starting point for use as a dump building for loaded hoppers.



Jack Liwo found two 1970's era kits that have to be cleaned up, (maybe) re-motored and decorated for the Boston & Maine.



CAR HOUSE

November 15, 2012

Please forward any and all erratta to Bill Gawthrop, Car House editor at wegawthrop@aol.com. Virtual tomatoes are also welcome..... it's part of our quality improvement.....

This Month's Clinic

Dean Pryers presented "Restoring the Pere Marquette 1225." Dean covered the events and people leading up to the formation of the Steam Railroading Institute including the drive of several Michigan State University students.

He described the move of the 1225 from the MSU campus and the original restoration activities.

Dean briefly discussed the 1225's activities following restoration. He then gave the reasons for the current requirements for boiler rebuild and the status thereof.

Dean's presentation was loaded with technical information and companion photos of the rebuilding process.



Upcoming Events	December Clinic
-----------------	-----------------

- Nov. 23-24-25; Dec. 1,2,15&16: Open House, **Detroit Model Railroad Club**, Holly, MI, www.dmrcc.org
- Nov. 19 – Dec. 18: **Stoney Creek Model RR Club** Operating Modular Layout at Chrysler Museum, Auburn Hills, MI, <https://sites.google.com/smrrc/>

The December clinic is combined with the Show & Tell. See below.

Division 8 Board of Directors	Next Meeting's Show and Tell
-------------------------------	------------------------------

- Superintendent: John Jackson
jdsmjackson@sbcglobal.net
- Treasurer: Paul Runyan
prrdi61@sbcglobal.net
- Secretary: Bill Gawthrop
wegawthrop@aol.com
- Director: Saul Kalbfeld
fjgbus@gmail.com
- Director: Jerry Shanek
Jerry_shanek@yahoo.com

Next meeting Clinic and Show & Tell are the annual slide show presentation.

Bring your slides or send your digital images to Dan Lewis (by December 1) for inclusion into a meeting presentation.