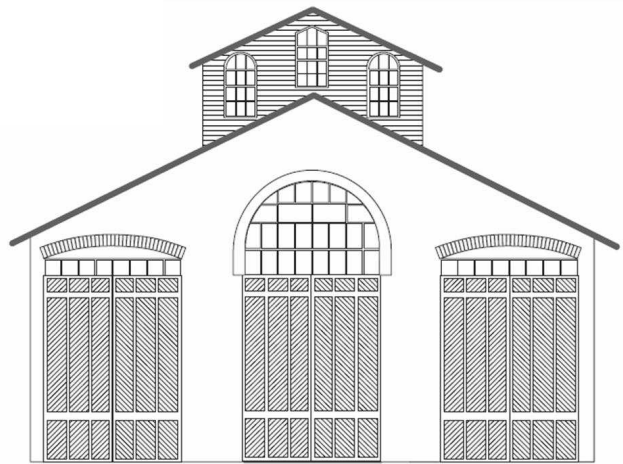


CAR HOUSE



Website:
<http://div8.ncr-nmra.org>

Website:
<http://www.nmra.org/>



THE NEWS

JANUARY 16, 2014

Hats Off

Troy, MI: Hats off to all of those who braved the bad weather to participate in the Division 8 meeting. For those in attendance, we were treated to a wonderful clinic on Modeling Early Tank Cars by John Bopp.

Errata

Troy, MI: Omissions and corrections from the December 2013 edition of the *Car House* include:

- Omitting the fact that Division 8 donated \$250 to the Troy Christian Chapel for the use the church during 2013.
- Misspelling John Bopp's name.

February Layout Tour

Troy, MI: Thanks to Phil Doolittle for arranging our first layout tour in 2014. This tour will feature two layouts in northern Oakland County:

- John DePauw's Elgin, Joliet & Eastern Railway in HO scale
- Brooks Stover's Buffalo Creek & Gauley in S scale.

The layout tour will be held on February 16th from 1 until 4 p.m.

Guest

Troy, MI: Braving the weather is this month's guest, Steve Weber who models in HO scale.

News from National

Troy, MI: Dave Thornton reports:

- There is an effort to create a new region known as "Continental Europe." This region will include all of continental Europe. Details are being worked on. The [current] British Region will remain as is.
- The new division in the North Central Region has been fully approved and is now official. The division known as "Division 9" includes the counties of Branch, Calhoun, Hillsdale, Kalamazoo, St. Joseph, and Van Buren in the southwestern portion of Michigan.
- The sale of the NMRA Headquarters Building has been completed.

Next North Central Region Convention Coming up sooner than you think!

April 25-27, 2014



Register Now!

http://www.divisiononencr.com/Convention/Toledo_2014.html

CAR HOUSE

January 16, 2014

THE NEWS

Model of the Quarter

Troy, MI: The Division 8 Board of Directors has decided to continue the Model of the Quarter contests in 2014. As such, this year's contests will feature rolling stock in different eras.

The Model of the First Quarter 2014 will be a piece of rolling stock whose prototype would have been built prior to 1914.

The rules are as follows:

Here are the rules:

1. The model cannot be ready-to-run.
2. The model can either be:
 - 2.1. Freight car OR
 - 2.2. Passenger car OR
 - 2.3. Non-revenue car
3. The model may be built in any scale.
4. The model can be either
 - 4.1. Scratch-built OR
 - 4.2. Kit-built OR
 - 4.3. Kit-bashed
5. The model must be painted and lettered

Judging of entries will be conducted at the March 20, 2014 meeting.

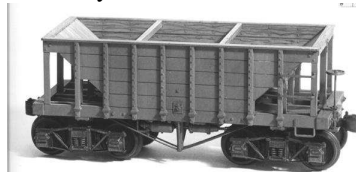
Perhaps your Model of the Quarter might be something like one of these:



Model by Silver Crash



Model by Silver Crash



Model by TichyTrain Group



Model by Westerfield

Show & Tell

This Month's Theme was Tank Car or What You Got as a Holiday Gift

Jim Zinser brought in a Christmas present, Hallmark locomotive and caboose ornaments. These ornaments unexpectedly match a Lionel locomotive and caboose that Jim received as a child, his very first train.



Ed Black brought in a Hall-Scott motor car which he scratchbuilt except for couplers, bell and a Ken Kidder motorized truck. He built the model from a Harold Geissel drawing in Model Railroader. The prototype was built in 1909.



CAR HOUSE

January 16, 2014

Rad Jones displayed a book that he received for Christmas. This book gives the history of the circus world museum and circus train cars and rail wagons.



Jim Dennis brought in a model of the last locomotive that the New York Central bought in November, 1967, just prior to the PC merger. This is an HO scale Alco C-430 model.



Dave Thornton offered an O scale tank car lettered for Hooker Chemical, Montague, IL. Dave used to work for Henkel a sister company of Hooker.



Larry Wolohon brought in:

- An O scale 2-bay hopper by U.S. Hobbies, decorated for the Montour RR
- An ACF Tank Car Book
- A Morning Sun Book on Tank Cars in Color



Bill Gawthrop offered an HO scale Sperry Rail Car in the 1960's-70's paint scheme. The model is a Proto2000 product of Walthers



Dan Lewis displayed two tank cars in N scale. These are water cars decorated for the Milwaukee Road.



Joel Goldberg displayed a reworked Walthers kit, circa 1960 of a doodlebug. Joel added detail including a front grill, new trucks, bell, whistle, underbody brake rigging, marker lights. He decorated the model for the C&NW #9905.



CAR HOUSE

January 16, 2014

Phil Doolittle brought in a Christmas and current project. It's an HO scale model Winchendon Machine Company kit by "LaserModeling 3" and is based on the actual building in Winchendon, MA. Phil has built the first floor thus far. He is waiting on the machine tools that will be placed on the first floor of this two-story building.



Rick Ware offered:

- A scratchbuilt (not by Rick) Bear Creek Lumber Company 2-axle tank car. The G scale model consists of a wood flat base with tank atop.
- A Hartland Locomotive Works plastic kit of a 2-axle tank car in G scale. The model consists of a wood flat car upon which sits a black tank. Rick is in the process of texturing and painting to make the model appear more realistic.



John Jackson offered four presents that he received for Christmas including:



- A print of the Strasburg RR depot
- A stencil set and accompanying DVD
- FRED
- Digitrax UR-90 I/R receiver



Please forward any and all errata to Bill Gawthrop, Car House editor at wegawthrop@aol.com. Virtual tomatoes are also welcome..... it's part of our quality improvement.....

CAR HOUSE

January 16, 2014

| January Clinic | |
|---|--|
| <p>This month's clinic was presented by John Popp. John described the evolution of the tank</p>  <p>car from its early mid-19th century beginnings up through the early 20th century.</p> | <p>John also display numerous examples inj HO scale of this tank car evolution.</p>  |
| Upcoming Events | February Clinic |
| <ul style="list-style-type: none"> ➤ Feb. 8-9 & 22-23: Detroit Model Railroad Club Open House, Holly, MI ➤ Feb. 15 & 16: 44th Annual Ann Arbor MRRC Train Show and Sale, Saline Middle School, Saline, MI ➤ Apr. 25-27: Maumee Express, NCR Convention, Toledo, OH ➤ May 3 & 4: Hobby-Rama, Gibraltar Trade Center, Mt. Clements, MI | <p>Vince Robinson will describe the moethods of securing and transporting lading on freight cars.</p> |
| Division 8 Board of Directors | Next Meeting's Show and Tell |
| <p>Superintendent: John Jackson jdsmjackson@sbcglobal.net</p> <p>Treasurer: Paul Runyan prrdi61@sbcglobal.net</p> <p>Secretary: Bill Gawthrop wegawthrop@aol.com</p> <p>Director: John Gavasso</p> <p>Director: Jerry Shanek Jerry_shanek@yahoo.com</p> | <p>Next month's show and tell will be freights cars with lading. You may, of course, bring your current favorite project.</p> |