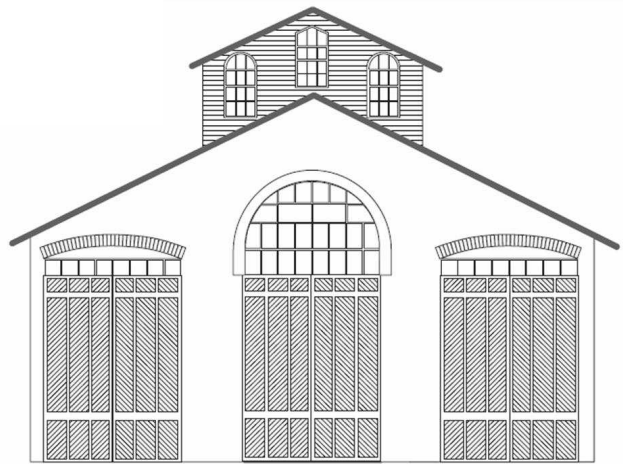


# CAR HOUSE



Website:  
<http://div8.ncr-nmra.org>

Website:  
<http://www.nmra.org>



## The News

### January 15, 2015

#### Model of the Quarter

Troy, MI: The theme for the **Models of the Quarter in 2015** is an off-line structure. The subject for the **Model of the First Quarter in 2015** is any off-line structure.

This off-line structure can be any structure otherwise not directly served by a railroad.

The rules are as follows:

1. The structure cannot start from a ready-to-run model.
2. The structure model may be built in any scale.
3. The model can be either
  - 3.1. Scratch-built *OR*
  - 3.2. Kit-built *OR*
  - 3.3. Kit-bashed
4. The model must be painted.
5. Please note that the NMRA states that vehicles are included in the "structures" category.

Examples:



Entrants will be judged at the March 2015 meeting of Division 8.

#### Guest

Troy, MI: A guest at this evening's meeting was Chuck White.

#### 2015 NCR Convention



Chuck White presented highlights of the upcoming North Central Convention which will be held, October 29 – November 1, 2015.

The details of the Convention agenda, location, and travel details can be found at:

<http://fortwaynerails2015.ncr-nmra.org/>

#### Hint

Troy, MI: Rick Ware described how he uses a word processor to print details for buildings including signs, window treatments, and floors.

#### Division 8 Elections Coming Up

Troy, MI: John Jackson announced that the Board of Directors is looking for a Division 8 member to head the nominating committee for upcoming elections.

THE

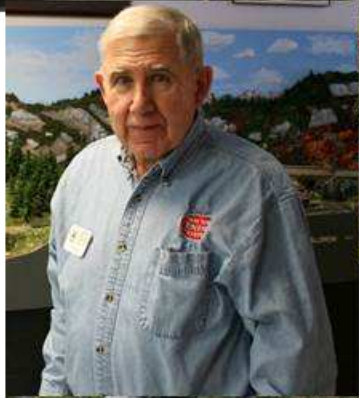
Monthly Newsletter of **Division 8** North Central Region of the NMRA

# CAR HOUSE

January 15, 2014

## Division 8 January Layout Tour

Division 8 members and guests were treated to two beautiful N scale layouts, the North Montana Line of Dan Lewis and the Move It On Railroad System of Rad Jones.



**Move It On  
Railroad System**



THE

Monthly Newsletter of **Division 8** North Central Region of the NMRA

# CAR HOUSE

January 15, 2014



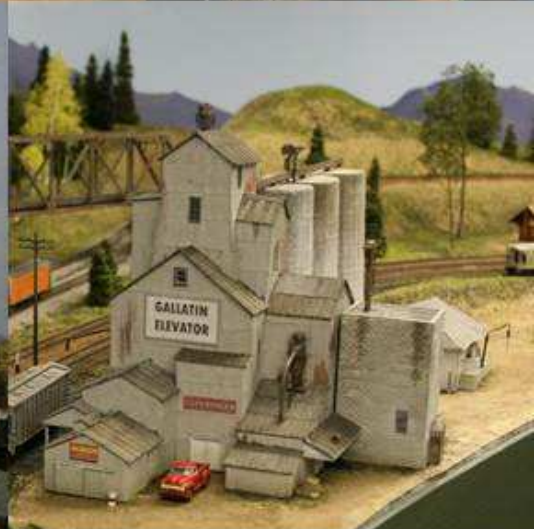
THE

Monthly Newsletter of **Division 8** North Central Region of the NMRA

# CAR HOUSE

January 15, 2014

The North Montana Line



THE

Monthly Newsletter of **Division 8** North Central Region of the NMRA

# CAR HOUSE

January 15, 2014



# CAR HOUSE

January 15, 2014

## Show & Tell

### This Month's Theme What You Received as a Holiday Gift

**Dave Thornton** displayed two books that he received for Christmas; *Trackside Around Detroit and Windsor with Emery Gulash* and *Trackside Around Detroit downriver with Emery Gulash*.



**Phil Doolittle** is trying to determine the size of a layout that could fit in the available space in his basement. To this end he created a "Smile Chart" with increasing radii of HO scale track on a piece of plywood.



**George Van Duynes** brought in a current project, an HO scale highway bridge in a skewed format.



**Ron King** offered a Santa Fe M-190 that he scratch-built using parts from Walthers kits in 1965. This HO scale model represents the prototype which operated on branch lines.



**Rick Horn** displayed a photo of the prototype Detroit Terminal Railroad in the Davison Yard. Rick is anxiously awaiting an HO scale version of this locomotive which he was supposed to receive for Christmas.

The latest ship update from Broadway Limited is April, 2015.



Curt Danielewicz brought in a GTW 50' modern gondola car in HO scale. Curt received a dozen of these Atlas Trainman gons from his wife.



# CAR HOUSE

January 15, 2014

**Steve Weber** brought in a magnetic jig which he received for Christmas.



**Paul Runyan** offered two Christmas gifts that he received:

1 2014 Hallmark Christmas ornament, a Lionel streamlined "Torpedo" locomotive with tender and observation car. Paul has all 20 ornaments.

2. Pre-war Lionel O-27 locomotive like the Hallmark ornament. The 1940 model was given to Paul by his Dad when he was 3 years old.



**Ken Scherer** brought in the Hallmark ornaments that he received for Christmas.



**Rad Jones** displayed an N scale float plane. The model is a wood kit using "sandwich" type construction. The floats were an extra addition.



**Bob Scherer** displayed a Pennsy GLa hopper in HO scale.

**Sorry  
No Image  
Available**

**Bill Gawthrop** brought in three light weight coaches decorated for the Grand Trunk Western. These HO scale models are by Rapido.



**Rick Ware** brought in "A Tear of Train Trivia" desktop calendar by the B&O RR Museum and Sellers Publishing.



**Terry Bossick** offered a Vermont Railroad 40 ft. box car. This model is a reminder of retirement trip of 1999.



# CAR HOUSE

January 15, 2014

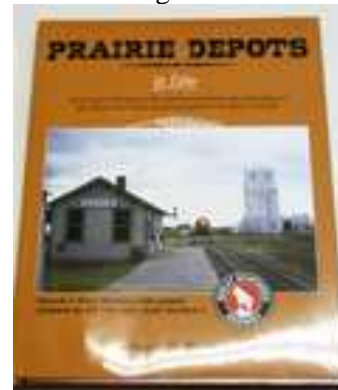
**John Jackson** did well this Christmas. He brought in the following:

- Railfan Chronicles, GTW 1975-2000 Holly Sub.
- Railfan Chronicles, Detroit & Mackinac Rwy. Vol. 1 1975-1987
- Pastels weathering kit
- ModelFlex weathering paint
- ComArt Colors weathering paints.



**Larry Wolohon** offered two presents that he received:

- A book , “Prairie Depots”
- O scale gas station kit.



**Steve Akers** brought in an HO scale wood trestle which he built from a Campbell kit. This trestle will span Mud Creek on his layout. Steve added extra detail including nuts and bolts.



Oh yes, and there are several HO people wandering about the structure!

**John Gavasso** displayed a Santa Fe “3400” class 4-6-2 locomotive.



**Tim Fisher** brought in a city block in HO scale.





# CAR HOUSE

January 15, 2014

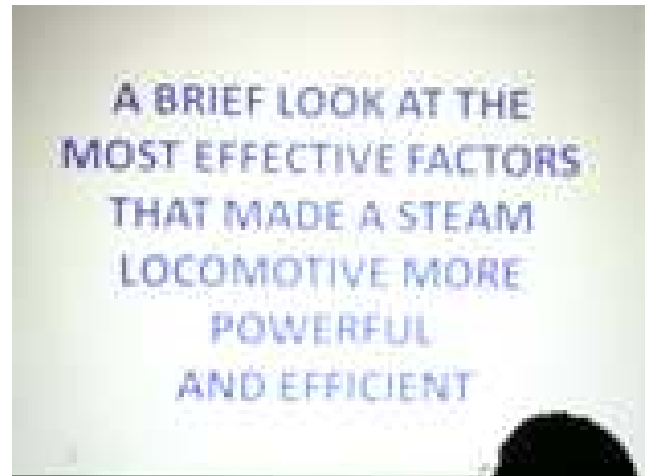
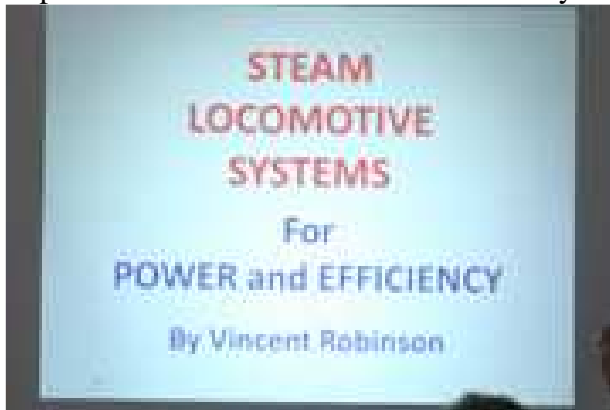
Vince Robinson brought:

- A PRR auto box in O scale
- USRA wood sheathed box car lettered for Texas & Pacific
- 3-ring binder containing data sheets for every model that Vince has built.



## January Clinic

This month's clinic was by Vince Robinson. He explained the many appliances used to improve locomotive function and efficiency.



Upcoming Events	February Clinic
<p>➤ <b>Jan. 31- Feb. 1:</b> "America's Great Train Show" at the Suburban Collection Showcase, Novi, MI</p>	<p>George VanDuyne will present his techniques in modeling winter scenery.</p>
Division 8 Board of Directors	Next Meeting's Show and Tell
<p>Superintendent: John Jackson  <a href="mailto:jdsmjackson@sbcglobal.net">jdsmjackson@sbcglobal.net</a>                      Treasurer: Paul Runyan  <a href="mailto:prrdi61@sbcglobal.net">prrdi61@sbcglobal.net</a>                      Secretary: Bill Gawthrop  <a href="mailto:wegawthrop@aol.com">wegawthrop@aol.com</a>                      Director: John Gavasso</p>	<p>The topic for Show &amp; Tell for February will be anything that is a winter scene or model covered in snow or your current favorite project.</p>