

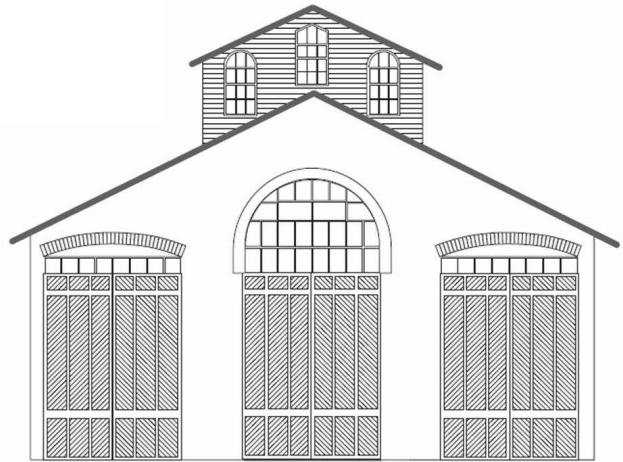
CAR HOUSE



Website:
<http://div8.ncr-nmra.org>



Website:
<http://www.nmra.org/>



THE NEWS

FEBRUARY 20, 2014

Model of the Quarter

Troy, MI: The Model of the First Quarter 2014 is a piece of rolling stock whose prototype would have been built prior to 1914.

The rules are as follows:

Here are the rules:

1. The rolling stock cannot start from a ready-to-run model.
2. The model can either be:
 - 2.1. Freight car OR
 - 2.2. Passenger car OR
 - 2.3. Non-revenue car
3. The model may be built in any scale.
4. The model can be either
 - 4.1. Scratch-built OR
 - 4.2. Kit-built OR
 - 4.3. Kit-bashed
5. The model must be painted and lettered

Judging of entries will be conducted at the **March 20, 2014** meeting

Perhaps your Model of the Quarter might be something like one of these:



Model by Silver Crash

Model by Westerfield



News from National

Troy, MI: Dave Thornton reports the following news from NMRA-National:

- The NMRA is in the best shape financially as it has ever been. This as a result of cost cutting, selling the HQ building, and organizational efficiencies.
- The NMRA sold the HQ building for \$896,000.
- Still no final signoff by the state of California for the transfer of items from the NMRA to the California State Railroad Museum.
- The current NMRA website is being transferred to a new website.
- The NMRAnet standard will be announced this summer.

Division 8 Website

Troy, MI: George Van Duyne asked the membership for ideas for improvement to the Division 8 Website. One item key to George was inclusion of photos and commentary on those members who wish to show their respective layouts to others via the website.

Guest

Troy, MI: One guest was present at tonight's meeting. He is Craig Haynes (sp?). Craig models the transition era in HO scale.

CAR HOUSE

February 20, 2014

Modeling Tip:

John Jackson offers the following tip.

When creating a concrete texture in HO scale, John used Krylon brand spray paint on polystyrene. John first sprays a primer followed by “granite” color followed by the final color John wants for the concrete surface.

**Next North Central Region Convention
Coming up sooner than you think!**

April 25-27

2014



Register Now!

http://www.divisiononencr.com/Convention/Toledo_2014.html

February 16th Layout Tour

Division 8 members and guest enjoyed viewing the layouts of John DePauw and Brooks Stover. Below are few snapshots from the day's activities.

Brooks Stover's Buffalo Creek & Gauley



in S scale captures the central West Virginia environment of the prototype Buffalo Creek & Gauley Railroad.



CAR HOUSE

February 20, 2014



John DePauw models the Elgin Joliet & Eastern Railway in HO scale.



The multi-level layout captures the urban / industrial flavor of the greater Chicago area, Gary and Joliet.



CAR HOUSE

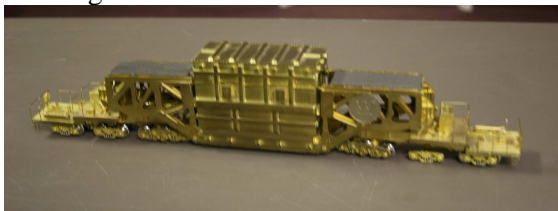
February 20, 2014



Show & Tell

This Month's Theme was Freight Cars with Lading

A Schnabel car is a specialized type of railroad freight car and **Marv Linke** brought in an example in HO scale. This particular model is carrying a Westinghouse transformer.



More info on Schnabel cars can be found on the Web: http://en.wikipedia.org/wiki/Schnabel_car
This model belongs to Tom Dart.

Dave Thornton offered an O scale 40 foot flat car. Dave modified an AHM model by adding Athearn trucks, Kadee couplers, wire grab irons and steps, and brass brake wheel. Dave painted and the model for decal B&O. Dave added 3 ERTL Farmall trackers secured with wheel blocks and tie-downs.



Steve Akers displayed a current project, prototype buildings in HO scale. Steve is scratch-building the market row structure using commercial materials.



Paul Runyon brought in a 50 foot Pere Marquette gondola with pipe load. The model is by Proto2000. Paul also brought in a 60 foot Walthers bulkhead flat with Johns Manville wrapped product.



John Gavasso offered a low side gondola with log load. The model is by Mantua.



CAR HOUSE

February 20, 2014

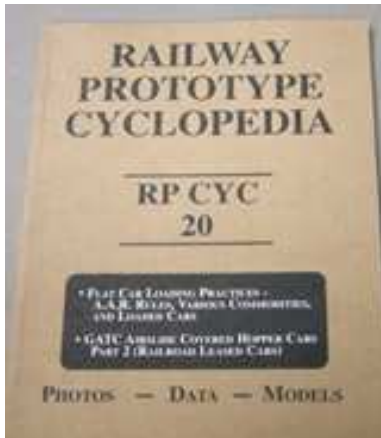
Rick Ware brought in a Walthers HO scale bulkhead flat car with plastic wrapped boxes as a load. Rick made the load at the Lansing NCR Convention in a clinic offered by Fran and Miles Hale.



John Jackson also participated in the same clinic as Rick Ware. John made a secured packaged lumber load. John used fishing line for the package tie-downs.



Larry Wolohon displayed an O scale Van Dyne tank car along with an RPC #20 book that describes the securing of loads on flat cars.



Jim Zinser brought in the following HO scale models:

1. NKP mill gondola with lumber load
2. Milwaukee Road coal hopper
3. Pennsy flat car with outhouse loads



George Van Duyne displayed two hopper cars in HO scale which he weathered with powdered pastels.



CAR HOUSE

February 20, 2014

Doug Liefeld brought in the following N scale models:

1. Two flat cars with WWII tanks
2. Flat car with box loads
3. Flat car with load of poles



Mark Mincek offered an HO scale Chicago & Great Western flat car by Life Like. Mark detailed each of the Farmall tractors adding:

1. MV lenses for lights
2. Air intakes

Mark painted the tractors and decorated them with Oddball graphics decals.



Gene Kome displayed two HO scale flat cars:

1. Santa Fe flat with truck trailer load
2. Santa Fe flat with two farm tractors



Vince Robinson converted three toy tank cars into three O scale tank cars. Vince added scale trucks, brake rigging, and brake wheels. He decorated the cars for DX, Sun Oils, and Southern Liquid Chlorine.



Bill Gawthrop offered an HO scale GP38AC decorated for GTW. The model started as an Atlas GP38 "yellow-box" model. Bill plans to convert two more of these Atlas GP38's to GP38AC's.



Paul Runyon brought in an HO scale gondola with pipe load and a Soo Line bulkhead flat.



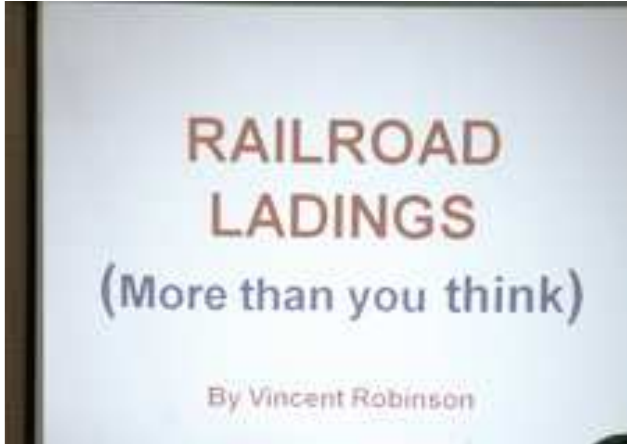

Ron King offered two USRA 100 ton flat cars each with two M-47 tanks. Ron painted and lettered the AHM flat cars. He also added Kadee couplers and metal wheel sets.



Please forward any and all erratta to Bill Gawthrop, Car House editor at wegawthrop@aol.com. Virtual tomatoes are also welcome..... it's part of our quality improvement.....

CAR HOUSE

February 20, 2014

February Clinic	
<p>This month's clinic was presented by Vince Robinson. Vince covered the many rules and regulations governing the securing of lading on flat cars.</p> 	
Upcoming Events	March Clinic
<ul style="list-style-type: none"> ➤ Mar. 8-9 & 22-23: Detroit Model Railroad Club Open House, Holly, MI ➤ Apr. 25-27: Maumee Express, NCR Convention, Toledo, OH ➤ May 3 & 4: Hobby-Rama, Gibraltar Trade Center, Mt. Clements, MI www.hobby-rama.com 	<p>The March clinic will be delivered by those members who bring (and explain) their favorite tool</p>
Division 8 Board of Directors	Next Meeting's Show and Tell
<p>Superintendent: John Jackson jdsmjackson@sbcglobal.net</p> <p>Treasurer: Paul Runyan prrdi61@sbcglobal.net</p> <p>Secretary: Bill Gawthrop wegawthrop@aol.com</p> <p>Director: John Gavasso</p> <p>Director: Jerry Shanek Jerry_shanek@yahoo.com</p>	<p>Next month's show and tell and clinic are one and the same. You may, of course, bring your current favorite project.</p>