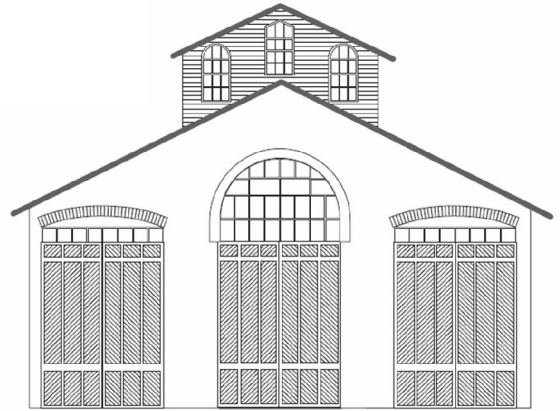


THE CAR HOUSE

Monthly Newsletter of
Division 8 North Central Region
National Model Railroad Association



Website:
<http://div8.ncr-nmra.org>



May 19, 2011

The News

Decisions Forthcoming

Troy, MI: Two proposals are before the membership of Division 8:

1. Whether to donated \$750 to the Diamond Club in memory of Dick Dittus.
2. Whether to continue support of the "Library Program" which is currently providing Model Railroad and Railroad Model Craftsman magazines to eight local high school libraries. The cost of this support is \$1100 for a two-year period.

The membership is aware of the funds in the treasury of roughly \$3,600. If both of these proposals are met and paid for, the treasury will be down to approximately \$1,800.

The membership is being advised to consider the proposals and be prepared to vote at the June meeting.

Spring Layout Tour

Troy, MI: The Division 8 2011 Spring Layout Tour was a success in any way you would like to measure it. Three layouts were featured in Troy, two in HO scale and one in G scale. Photos from the tour appear below.

Programming a Route in DCC

Troy, MI: Jim Zinser is looking for help in programming a route of Tortoise turnout control using Digitrax DCC equipment. Please contact Jim directly.



Model of the Second Quarter

Troy, MI: Don't forget to bring your flat car to be judged in the second quarter's Model of the Quarter contest.



Division 8 To Host 2013 NCR Convention

Troy, MI: Division 8 will host the NCR convention in 2013 after all. In a note from Jack Watson, President of the North Central Region, he said that Division 1 has decided not to host the 2013 convention.

Museum Gallery

Troy, MI: Dave Thornton reports from National that the newest fund raising drive will be to raise an amount of \$450,000 to go with the \$300,000 in pledges already received to develop the NMRA Gallery Exhibits at the California State Railroad Museum in Sacramento.

These gallery exhibits will be the first step in the NMRA's quest to develop a stand-alone museum at the California State Railroad Museum site.

Topside Creeper

Troy, MI: Dick Gray has a Topside Creeper which he is giving Division 8 for members' use. The creeper is available on a loan basis. Marv Linke will be the keeper of the creeper.

Guest

Troy, MI: Ron King was a guest at this evening's meeting. Ron also brought a King reefer for Show & Tell.

Layout Tour

The Michigan Central by Jim & Lois Dennis

This HO scale layout features the New York Central with some CB&Q, in a setting of urban and rural landscape.



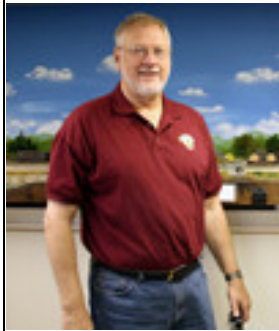
Diamond Club Surpasses Financial Goal

Chattanooga, TN: The Diamond Club has now received over \$100,000 in donations per Dave Thornton.

Layout Tour

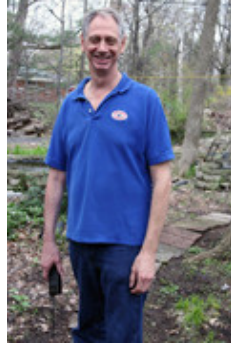
The Boston & Maine RR, Green River Subdivision by Gale Saxton

This fictional HO scale layout represents a division running north from the Maine coast through the mountains toward Berlin, New Hampshire. The railroad is set in the late 1950's but with artistic license it is still running steam along with first generation diesels. The emphasis is on capturing the scenery of northern New England.



**Layout Tour
The BNSF by Jerry Shanek**

This G scale layout features double track mainline through the woods with a view of flora and fauna for G-scale people as they ride the trains in Jerry's back yard. Rolling stock includes the California Zephyr (13 cars) as pulled by two Burlington E-8s (8 motors of pulling power.) Freights are handled by both steam and diesel.



Here's Tigger, Jerry's Maintenance of Way Superintendent and head of fauna management. He tried to run me off the track twice!



Show & Tell

Refrigerator Cars or your favorite current project

Thomas Dart displayed an O scale Denver & Rio Grande Western idler flat car. The prototype of this car served as a standard-to-narrow gauge "transition car." Thomas has no idea of the origins of the car



as he purchased the car in pieces on eBay and assembled the final "product."

Jim Dennis brought in a Railway Express reefer. This car was built by ACF in 1948 and rebuilt by Pullman in 1965. The model is in HO scale.



Paul Runyan offered an HO scale Santa Fe reefer. This billboard model by Intermountain shows "Grand Canyon Line" on one side and "Ship Santa Fe all the Way" on the other side.



R. B. Trombley brought in an N scale URTC – Miller refrigerator car. This weathered 40 ft. wooden car has new couplers and steel wheels.



Jim Zinser brought in two HO scale reefers:

- Hood's milk express refer. It's a brass model but Jim is not sure who the model builder is.



- A Soo Line reefer which is a model by Intermountain.



Phil Doolittle brought in:

- An HO scale 4-door wood reefer decorated for the Colorado Midland. He built this model from a LaBelle kit back in the 1970's.
- A current project, an HO scale grain elevator with office that he built from a Campbell kit. The elevator is still under construction and still needs rafters, stairs, and railings. This building is for Phil's Free-Mo module.



George Anderson brought in a G scale model of a George Hammond refrigerator car. Per George, George Hammond started with the Michigan Car Co. in Detroit building reefers in 1867. By 1899 the company already had a fleet of over 800 cars. Hammond continued to add to his fleet well into the ACF era after 1900.



Jim Sieradzinski displayed two reefers, one Swift car by Bachman and another custom painted Athearn kit "Nashville Valley Lines." Both models are in HO scale.



Marv Linke bought in a brass caboose in N scale



which he built from an Athabasca kit. Marv soldered the pieces together. He then sand blasted the CP-type wide vision model and gave it a clear coat. Marv also recommends "The Bug" bending tool for making small sharp bends.

Phil Kenyon displayed two HO scale 50 foot box cars, each decorated for the Chesapeake & Ohio Railroad.



The model on the left is an auto box car. The model on the right is a plug door box car.

Bill Gawthrop offered a Railway Express reefer in HO scale. The model is by Athearn.



Terry Bossick presented a "Swift" refrigerator car in HO scale. The model is by Bachman.



Rick Ware brought in a G scale wood reefer. The model by USA Trains has a paint job commemorating the opening of the new St. Clair River tunnel. One side of the car is painted for the U.S. and the other side for Canada. The car was a gift from his wife, Marie.



Fred Cosgrove offered an O scale reefer by Atlas decorated for "Harding's Butter". He also offered an HO scale Illinois Traction System reefer.



Ken Sherer offered ten refrigerator cars, his entire HO scale fleet.



John Jackson presented a wood-side refrigerator car decorated for Goebels Beer. The HO scale model is from Greenway Products. Greenway offers approximately 100 different brands as custom paint jobs. Beer paint jobs include Stroh's, Goebels, and Lone Star.



Ed Black brought in a flat car that had been converted to an automobile bridge. The HO scale flat car retains most of its underbelly super detailing.



Ron King offered an HO scale reefer decorated for the King Packing Company.



Gene Kome brought in a Santa Fe Railway Rolling Stock Reference book entitled "Mechanical

Refrigerator Cars, years 1945 – 1988. The book is full of details about the Santa Fe's variety of reefers.

Dave Thornton brought in an O scale reefer decorated for Western Fruit Express. He kitbashed a Lionel car including



building up new bolsters, adding Kadee couplers and Athearn sprung trucks. He replaced the Athearn plastic wheels with metal ones from Intermountain.

Jerry Shanek brought in some of his reefer fleet in G scale.



Stroh's wood reefer by Delton



CN steel reefer by Aristo

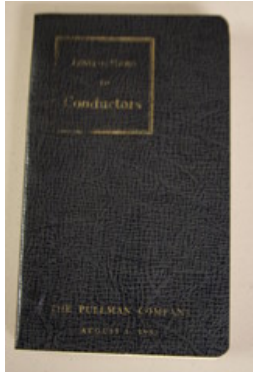


D&RGW wood reefer by Aristo



Dairyman's Dispatch wood reefer by Bachmann

Dave Katona brought in a book "Instructions for Conductors" published by the Pullman Company in 1952.

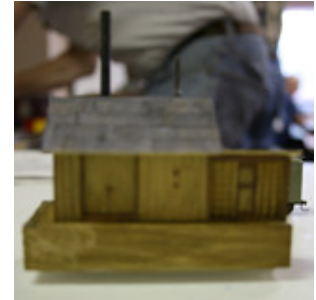
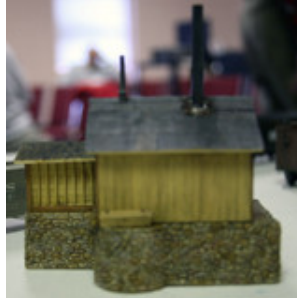


Larry Wolohan brought in a Pacific Fruit Express R-40 refrigerator car in O scale.



Larry also brought in a book "Color Guide to Refrigerator Cars."

Jim Clements brought in an HO scale pump house. The prototype for the model is a pump house at Fork Creek, Colorado between Golden and Central city.



Jim also brought in a HO_n3 Colorado Southern reefer which he built from a Grandt Line kit.



Please forward any and all errata to Bill Gawthrop, Car House editor at wegawthrop@aol.com. Virtual tomatoes are also welcome..... it's part of our quality improvement.....

This Month's Clinic	
<p>This month's clinic was on the Pullman Palace Car Company as presented on the Ultimate Railroading DVD series by Trains Magazine.</p> <p>The video covered the founding of the Pullman Company by George Pullman based on his genius to design and build a successful sleeping car.</p> <p>Following the success of the early models of the Pullman cars and with the boost received by Pullman for having supplied one of its cars to the Lincoln funeral train, the Company quickly arose as a major corporation in the United States.</p>	<p>Indeed, the Pullman Company not only designed and built railroad passenger cars, it also managed and staffed the fleets of passenger cars of the U.S. railroads.</p> <p>The video also covered the workers strike of May – June 1894, Pullman's death, and the coming to "power" of Todd Lincoln as president of the Pullman Company.</p> <p>The video closed with the transition of the passenger car from Pullman management to individual railroad company management to Amtrak.</p>

Upcoming Events	June Clinic
<p>➤ July 24, Garden Railways layout tour. Details will be forwarded by Jerry Shanek</p>	<p>The Dan Lewis will present the clinic for June on stock car trains</p>
Division 8 Board of Directors	Next Meeting's Show and Tell
<p>Superintendent: John Jackson jdsmjackson@sbcglobal.net</p> <p>Treasurer: Gene Kome marjgenekome@comcast.net</p> <p>Secretary: Bill Gawthrop wegawthrop@aol.com</p> <p>Director: Saul Kalbfeld fjgbus@comcast.net</p> <p>Director: Jerry Shanek Jerry_shanek@yahoo.com</p>	<p>The topic for next (June 16th) meeting's Show and Tell is a stock car</p> <p>Of course, you may bring in your prized current project as well.</p>