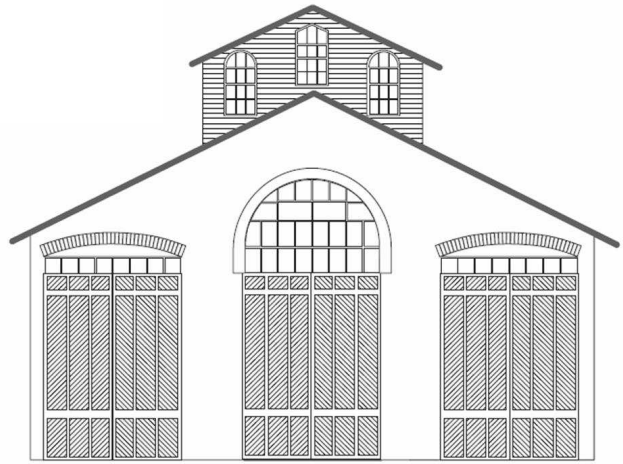


# CAR HOUSE



Website:  
<http://div8.ncr-nmra.org>

Website:  
<http://www.nmra.org/>

## THE NEWS

JUNE 20, 2013

### It's a TIE!

Troy, MI: Marv Linke (left) and Bill Gawthrop tied for first place in the Model of the Second Quarter 2013.



Their entries:



### Another AP Award

Troy, MI: Rad Jones (right) receives his Author certificate from Larry Wolohon. Congratulations Rad.



### AND, Another AP Award

Troy, MI: John Jackson (right) receives his Association Volunteer certificate from Larry Wolohon. Congratulations John.



# CAR HOUSE

June 20, 2013

## THE NEWS

### Paint

**Troy, MI:** George Van Duyne offered the following tip. There was a discussion of that recently on the *Trainboard* forum which included this link to a cross reference chart on the MicroScale web site. It lists the nearest color match by manufacturer and color name. It appears to be a "grass roots" effort as they appear to solicit input from modelers  
[http://www.microscale.com/ResourceCntr\\_Floquil.html](http://www.microscale.com/ResourceCntr_Floquil.html)

### Model of the Third Quarter 2013

Troy, MI:



We continue with the theme - models of the Quarter in 2013 featuring a scene. The third quarter of 2013 Model of the Quarter will feature **a highway bridge**. Here are the rules:

1. The scene may be in any scale.
2. The scene must be transportable to the meeting. In other words the judges must be able to judge the scene in person.
3. The minimum size for the scene is:
  - 3.1. 6" x 6" in N or smaller scale
  - 3.2. 12" x 12" in HO scale
  - 3.3. 18" x 18" in S or O scale
  - 3.4. 24" x 24" for scales larger than O

### Congratulations

Troy, MI: Congratulations are in order to Jim Clements for building the Sugar Spring Mining RR and Brooks Stover for writing the article and taking the photos. The story is in the July 2013 edition of the nmra magazine.

### Convention News

Troy, MI: Newsy items from the 2013 NCR Convention Committee include:

1. Op Sessions: 23 layouts are now confirmed for the week preceeding the Convention. 300 operator slots available. You can signup via the Convention website <http://www.ncr-nmra.org/event/north-central-crossing-2013-ncr-convention>
2. The major focus for the Sales & Marketing activity is selling advertisements. Commitments of nearly \$1,000 for pike and commercial-size ads have been received to date.
3. Clinics: The Convention website lists all of the clinics.
4. Tour Layouts: 31 layouts will be open during the Convention. Details appear on the Convention website.
5. Bill Gawthrop is seeking those who would like to advertise their "private road" in a **pike advertisement** in the Convention Program. Your artwork and \$10 are all that are required.

# CAR HOUSE

June 20, 2013

## THE NEWS

*Continued from the previous page*

4. The scene must contain:
  - 4.1. "Vegetation" in the form of ground cover and may also include bushes, trees, "water," etc.
  - 4.2. A bridge that carries a road way over a railroad track or tracks.
  - 4.3. A railroad track or tracks fully ballasted and weathered.
5. Elements in the scene may be either built from scratch, kit-built, or kit-bashed.

### New Webmaster Needed

Troy, MI: Marv Linke is "retiring" as webmaster for Division 8's site of the NMRA-North Central website. Applicants should apply to the Division 8 Superintendent, John Jackson.

We would like to thank Marv for birthing and nurturing the site for all these years.

## Show & Tell

The topic for this Month's Show and Tell is anything San Diego or Current Favorite Project

**Gene Kome** brought in a collection of prototype photographs which he took in and near San Diego's Santa Fe station.



**Larry Wolohon** displayed:

- An O scale ATSF class BX-6 box car
- RMC article on ATSF class BX-3 and BX-6 box cars
- Railroad maps of San Diego



# CAR HOUSE

June 20, 2013

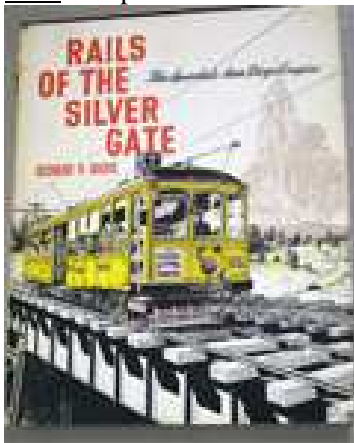
**Saul Kalbfeld** brought in an HO scale Sperry Rail Car #135. The 40 year old brass model is by Hallmark. Saul obtained it on eBay.



**John Gavasso** offered an HO scale Santa 2-8-2 steam locomotive. The HO scale model is currently in rough condition; so, John's challenge is to enhance its appearance and running condition.



**Fred Cosgrove** displayed a book on the early transit system in San Diego. Rails of the Silver Gate was published in 1960.



**George Van Duyne** brought in two truss bridges in HO scale. George built the larger bridge from a Campbell kit. George built the second bridge from a Walthers kit. He used track from Micro Engineering in the second bridge.

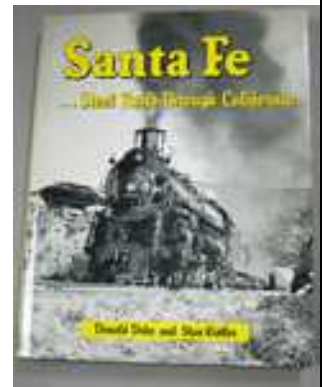
George painted the smaller bridge with Rustoleum Auto Primer followed by a sprayed coat of Modelflex "weathered black." George wants to still apply weathering.



**George Anderson** offered a Bachmann flat car in On30 scale. The car is lettered for the Hancock & Calumet RR and is loaded with chunks of mass copper from the Caledonia Mine of Michigan's Upper Peninsula.



**Tim Fisher** brought in the book, Santa Fe Steel Rails through California by Stan Kistler and Donald Duke. The book covers the history of the Santa Fe RR in California. Discussed in the book are the *San Diegan* streamline service.



**Jim Zinser** displayed an HO scale PFE refer The prototype, no doubt, went through San Diego sometime during its life.



## Strut YOUR Stuff!

**Bring in your model railroading accomplishments or prized positions and display them for Show & Tell**

**We'd like to see what you got.**

# CAR HOUSE

June 20, 2013

**Vince Robinson** offered several 1920's vintage photos that he had of a railroad that once served Grosse Isle.



**Dave Thornton** brought in a railroad map of Detroit dated 1967. There have certainly been a lot of changes since then!



**Dan Lewis** displayed a photo of the completed steel viaduct that he completed in N scale and installed on his layout.



**Bill Gawthrop** displayed a photo of the #1 scale bridge that he has completed detailing. Bill laid the detailed track on superstructures provided by Tom Dart. The 5-span pony truss bridge is a scale 500 feet long.



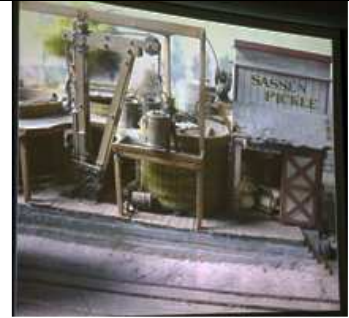
Please forward any and all erratta to Bill Gawthrop, Car House editor at [wegawthrop@aol.com](mailto:wegawthrop@aol.com). Virtual tomatoes are also welcome..... it's part of our quality improvement.....

# CAR HOUSE

June 20, 2013


## This Month's Clinic

This month's clinic was entitled "The Best of San Diego." Rad Jones and Dan Lewis described their unique exposure to a number of the "best" layouts on personalized layout tours of personal and club layouts in the greater San Diego metropolitan area. Here are just a very few of the photos from their presentation.



# CAR HOUSE

June 20, 2013

Upcoming Events	July Clinic
<ul style="list-style-type: none"> <li>➤ <b>July 14-20:</b> NMRA National Convention, Atlanta, GA</li> <li>➤ <b>Aug. 3 &amp; 4:</b> Huckleberry Railroad Railfan Weekend, 6140 Bray Road, Flint, MI</li> <li>➤ <b>Sept. 22:</b> Monroe Model Train Show, Monroe County Fairgrounds, Monroe, MI</li> </ul>	<p>Ed Black will present Modeling at the Turn of the (20<sup>th</sup>) Century.</p> 
Division 8 Board of Directors	Next Meeting's Show and Tell
<p>Superintendent: John Jackson  <a href="mailto:jdsmjackson@sbcglobal.net">jdsmjackson@sbcglobal.net</a></p> <p>Treasurer: Paul Runyan  <a href="mailto:prrdi61@sbcglobal.net">prrdi61@sbcglobal.net</a></p> <p>Secretary: Bill Gawthrop  <a href="mailto:wegawthrop@aol.com">wegawthrop@aol.com</a></p> <p>Director: John Gavasso</p> <p>Director: Jerry Shanek  <a href="mailto:Jerry_shanek@yahoo.com">Jerry_shanek@yahoo.com</a></p>	<p>Anything railroad from the period before 1918 or your current favorite project.</p>