

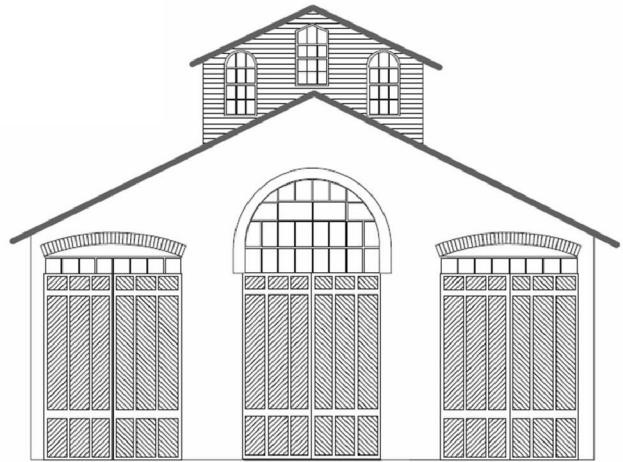
CAR HOUSE



Website:
<http://div8.ncr-nmra.org>



Website:
<http://www.nmra.org/>



The News

June 18, 2015

From the Super

Troy, MI:

I'm really a "freelance" sport of guy. I want my OWN railroad, not somebody else's. If I really like a piece of rolling stock, or a quaint building, I want to create an excuse to have it, not have to check with some data somewhere that will tell me my prototype never had it so I can't. Also, I'd prefer to be building or operating rather than researching.

But I've come to recognize that there are disadvantages to this sort of modeling, as well as advantages. For instance, I thought about going after the Structures Certificate in the NMRA Achievement Program, but bumped up against the question of "What would I scratch-build?" I've got so many unbuilt kits in my inventory, how could I come up with something as "cool" to build from scratch? Dan Lewis and Brooks Stover, to name just two, never have that problem. They know what buildings their prototype railroad had, so they jump in and build them. And by the way, pick up MMRs along the way!

I had an entirely new appreciation of prototype modeling a couple of weeks ago. I had the

opportunity to visit the Michigan Lines layout of Jay and Brook Qualman, out west in Milford. As a GM engineer, I spent a fair amount of time in or going through Milford, because I spent quite a bit of time at the GM Proving Ground there, even having my office there for 3 or 4 years. Well, the newest totally cool feature of the Qualmans' layout is Milford. And I mean REALLY Milford as it existed in the 1950s. You walk into their basement and (if you were ever familiar with the town itself) you exclaim, "Wow, that's Milford!" It's all there: Main street, the mill pond and dam, the Ford plant, the railroad bridge on the south end of town, even some of the actual houses! The town of Milford on their layout is larger than a lot of model railroaders' complete layouts! Selective compression? Not so's you'd notice! My hat's off to the Qualmans for a totally inspirational layout. And by the way, Brook is the primary builder of those historically accurate structures. She can build a town in the time it seems to take me to build a kit!

In case you've never seen their layout, I should add that Milford is the SECOND Michigan city they've modeled in great detail. The first is Saginaw, Jay's home town. That model includes a brickyard (owned by Jay's grandfather, I think he said) with a narrow gauge industrial track.

[continued on Page 2]

CAR HOUSE

June 18, 2015

| | |
|--|---|
| <p><i>[continued from Page 1]</i> Prototype model railroading can be marvelous. I guess I'll have to take my scratch-building clues from another of our MMRs, Ed Black. His railroad is freelanced, but his structures are ALL scratch-built.</p> <p>Phil</p> | <p>Division 2 Resurrected Troy, MI: Dave Thornton reports that Division 2 has been resurrected. This division covers the geography around Traverse City.</p> |
| <p>Model of the Second and Third Quarter Troy, MI: The subject for the Model of the Second Quarter in 2015 was a highway bridge. Sorry to report that there were no contest entrants.</p> <p>There will be no Model of the Third Quarter 2015 in keeping with our tradition.</p> | <p>Layout Tour Chairman Needed Troy, MI: We Say Again: As Phil Doolittle is now our Division Superintendent we are looking for a person to chair the Division 8 layout tours. Candidates should apply to the Division 8 Superintendent.</p> |

Show & Tell and Clinic

This Month's Theme is Something that You Bought at a Hobby Show or Hobby Shop

Jim Zinser brought in a Soo Line Class L2 2-8-2. This beautifully weathered HO scale model is by Division Point.



John Gavasso offered a NYC Class H-10a 2-8-0 lettered for the Cumberland & Ohio. The model is in brass and is HO scale.



George Van Duyne displayed an HO scale passenger depot which he built from a Plasticville kit. He gave a model a bit of paint and added a brick platform.



Larry Wolohon brought in an O scale Mullet River kit for a Northern Pacific truss rod box car.



CAR HOUSE

June 18, 2015

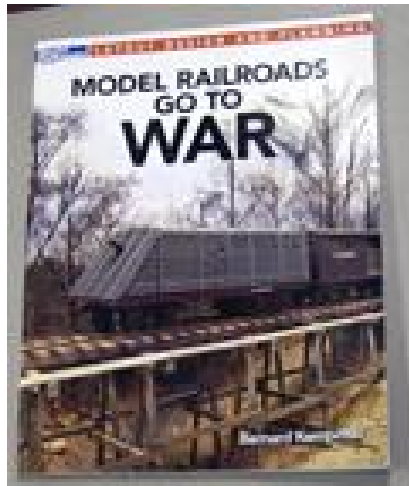
Saul Kalbfeld offered a standard of NYC caboose kit. This caboose was adored by railfans and hated by train crews who rode them in the dead of winter. Saul also offered an example of his track for the hidden staging of his new layout.



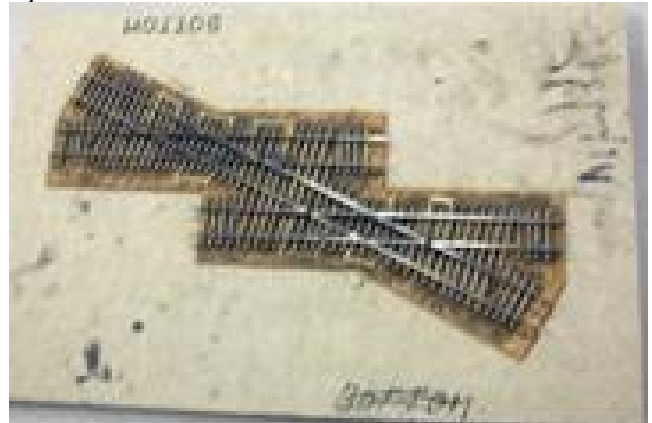
Phil Doolittle displayed the HO scale model of the Winchendon Machine Shop, his latest project. It took him 18 months to complete this beautiful model.



Thierry Lach brought in a book entitled Model Railroads Go to War.



Marv Linke offered custom built diamonds in HO scale. The track is hand-spiked with the rail attached to basswood ties. Marv built the track work for the *Operations Road Show* folks.



Phil Kenyon brought in two N scale CSX GP diesels.



Terry Bossick offered an AHM Italian 0-6-0 in HO scale.



CAR HOUSE

June 18, 2015

Fred Cosgrove displayed a Pacific Traction Peter Witt of Detroit Street Railway #3245. This HO scale model was found in Philly this past May per Fred.



Richard Kubeck brought in DVD's describing DCC set up and programming.



Ken Scherer brought in an HO scale Also S-2 decorated for the Grand Trunk Western.

**Sorry
No Image
Available**

Bill Gawthrop brought in an A-B set of Baldwin "Sharknoses", RF-16's decorated for the B&O. The models are by Broadway Limited and have DCC + Sound.



CAR HOUSE

June 18, 2015

Tim Fisher brought in a Santa Fe drover's caboose for a prototype built in the 1930. Ten of these prototypes were built. He also brought in a wooden drovers caboose for which 8 were built in the 1930's from coaches. Tim reports that 12 of the 19 of the steel drovers' cabooses were rebuilt from combines with baggage compartments and passenger compartments.

Tim also brought in a #8 turnout which he bought from P&D Hobbies. All models are HO scale.



John Jackson offered a couple of items that he bought at the National Train Show in Cleveland last year. These included:

- A Bar Mills "Bud Smiley's Gas Stop" (HO). Per John this model will be part of a complex of 5-6 service stations that will become an on-line industry of custom vehicles and vehicle restorations, etc.
- A Spring Mills Depot HO scale model of an Atlas Cement covered hopper.



Rick Ware offered an Erie B-2 steam crane in HO scale. The model is by Jordan and Rick purchased the model at Empire Hobbies and Troy.



CAR HOUSE

June 18, 2015

| Upcoming Events | June Clinic |
|--|--|
| <p>➤ July 11: Detroit Model Railroad Club open house, Holly, MI, www.dmrrc.org</p> | <p>George Kohs will discuss brass models projects. Check out his website to see what he is all about: www.kohs.com</p> |
| Division 8 Board of Directors | Next Meeting's Show and Tell |
| <p>Superintendent: Phil Doolittle doolittlep@comcast.net Treasurer: Paul Runyan prrdi61@sbcglobal.net Secretary: Bill Gawthrop wegawthrop@aol.com Directors: John Gavasso John Jackson jdsmjackson@sbcglobal.net</p> | <p>The topic for the July Show & Tell is something brass. You, of course, may bring in your current favorite project.</p> |