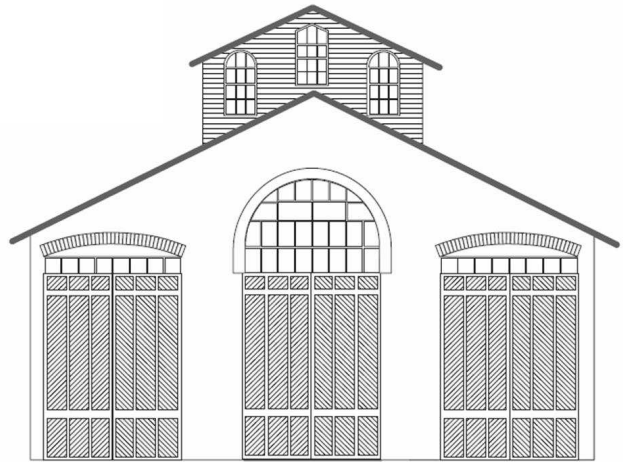


CAR HOUSE



Website:
<http://div8.ncr-nmra.org>

Website:
<http://www.nmra.org/>

THE NEWS

JULY 18, 2013

Model of the Third Quarter 2013

Troy, MI:



We continue with the theme - models of the Quarter in 2013 featuring a scene. The third quarter of 2013 Model of the Quarter will feature a **highway bridge**. Here are the rules:

1. The scene may be in any scale.
2. The scene must be transportable to the meeting. In other words the judges must be able to judge the scene in person.
3. The minimum size for the scene is:
 - 3.1. 6" x 6" in N or smaller scale
 - 3.2. 12" x 12" in HO scale
 - 3.3. 18" x 18" in S or O scale
 - 3.4. 24" x 24" for scales larger than O
4. The scene must contain:
 - 4.1. "Vegetation" in the form of ground cover and may also include bushes, trees, "water," etc.

Convention News

Troy, MI: Newsy items from the 2013 NCR Convention Committee include:

1. As soon as you register for the Convention, you can sign up for slots in the operating sessions. Use the Convention website <http://www.ncr-nmra.org/event/north-central-crossing-2013-ncr-convention> to make your choices.
2. Sales & Marketing folks would like to see more of you purchase a pike ad, See Bill Gawthrop to place your order. Your artwork and \$10 are all that are required.
3. Tour Layouts: 31 layouts will be open during the Convention. Details and photos appear on the Convention website.

New Webmaster Needed

Troy, MI: Marv Linke is "retiring" as webmaster for Division 8's site of the NMRA-North Central website. Applicants should apply to the Division 8 Superintendent, John Jackson.

We would like to thank Marv for birthing and nurturing the site for all these years.

CAR HOUSE

July 18, 2013

THE NEWS

Continued from the previous page

- 4.2. A bridge that carries a road way over a railroad track or tracks.
- 4.3. A railroad track or tracks fully ballasted and weathered.
- 5. Elements in the scene may be either built from scratch, kit-built, or kit-bashed.

Show & Tell

The topic for this Month's Show and Tell is anything Early 1900's or Current Favorite Project

John Gavasso brought in a 4-2-0 steam locomotive named the "Pioneer". The prototype was the first locomotive for the C&NW. This O scale wood model was by Strombecker, circa 1950.



John Jackson offered an 1860's train by Tyco (circa 1959). The train consists of a General (4-4-0), flat car, tank car, stock car, box car and combine and in HO scale.



Paul Runyan displayed a Pennsylvania 4-4-0 American type locomotive in HO scale. The locomotive is by Roundhouse and is accompanied by four 19th century passenger cars.



George Van Duyne brought in a Manuta General which he built from a kit around 1963 and a combine. Per George, the locomotive still runs well.



CAR HOUSE

July 18, 2013

Bill Gawthrop offered an HO scale privy. This is the single occupant model, a.k.a. "One Holer." Bill scratchbuilt this little gem from individual dimensional lumber. It includes a working door, rusting hinges, rear vent, and an occupant. The privy does not include insects, lights, TP, or smell.



Although the privy predates the 1900's it really spanned the ages for those not fortunate to have indoor plumbing.

Terry Bossick displayed a horse-drawn street car. This open car was popular before electric was the accepted power for street railways.



Rick Ware brought in a pre-WWI G scale Bachmann steam donkey on a flat car. Rick scratchbuilt the canopy and added other details and figures. He repainted and weathered the model.



Tim Fisher offered an Omaha 0-6-0 1890's production model light switcher. The locomotive has the drive rod on the second driver providing a better ride than if the rod was connected to the third driver.



Tim also brought in his grandfather's railroad watch. The watch was "built" in 1915. You can set time by removing the crystal and moving a small lever to engage the stem. Tim's grandfather was a switcher engineer for the Pennsylvania RR.

Gene Kome offered a tank car in HO scale. Gene built the car from a kit by Roundhouse.



Fred Cosgrove displayed an HO scale model of an AEC/CA&E #10 combine. The model was produced by S. Soho & Company. The prototype was built by Stephenson Car Company in 1902.



Phil Kenyon brought in a Central Pacific coach and combine. Phil also brought in a current project 8 pos. terminal strip for a Tortoise switch motor and two color LED mini signal.



CAR HOUSE

July 18, 2013

Please forward any and all erratta to Bill Gawthrop, Car House editor at wegawthrop@aol.com. Virtual tomatoes are also welcome..... it's part of our quality improvement.....

This Month's Clinic

This month Ed Black presented his beautiful HO scale Central Indiana featuring modeling at the Turn of the (20th) Century. Ed delivered his presentation via video and commentary highlighting scenes and construction details throughout his empire.



Upcoming Events	August Clinic
<ul style="list-style-type: none"> ➤ Aug. 3 & 4: Huckleberry Railroad Railfan Weekend, 6140 Bray Road, Flint, MI ➤ Sept. 22: Monroe Model Train Show, Monroe County Fairgrounds, Monroe, MI 	<p>George Kohs will present brass locomotives.</p>
Division 8 Board of Directors	Next Meeting's Show and Tell
<p>Superintendent: John Jackson jdsmjackson@sbcglobal.net</p> <p>Treasurer: Paul Runyan prrdi61@sbcglobal.net</p> <p>Secretary: Bill Gawthrop wegawthrop@aol.com</p> <p>Director: John Gavasso</p> <p>Director: Jerry Shanek Jerry_shanek@yahoo.com</p>	<p>Anything brass or your current favorite project.</p>