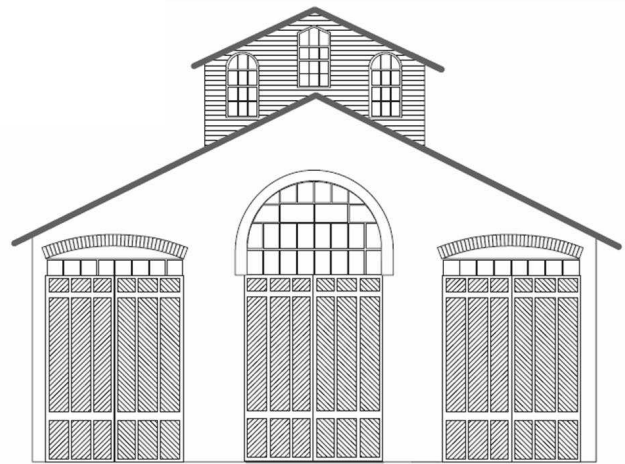


CAR HOUSE



Website:
<http://div8.ncr-nmra.org>

Website:
<http://www.nmra.org/>

THE NEWS

AUGUST 16, 2012

2012 Convention & Train Show Success

Grand Rapids, MI: Grand Rails 2012 was a financial and attendance success per Dave Thornton. Numbers were not available at "press time." The National Train Show was equally a success. Great news!

Model of the Quarter

Troy, MI: Don't forget to bring your entry to the Model of the Quarter Contest for judging at the September 20th meeting.

2013 Convention Buttons

Troy, MI: The 2013 NCR Convention buttons have arrived. You are kindly requested to take a button and proudly wear it at NMRA conventions and meetings.

In case you may have forgotten, the subject is a vehicle. And, here are the rules:

1. The vehicle may be scratch-built or kit-bashed.
2. The vehicle may be in any scale.
3. The application of the [prototype] vehicle may be on-road or off-road.
4. The vehicle must be painted.

The Prototype

Bellevue, OH: It's been a great summer for chasing the prototype. Here's a Wheeling & Lake Erie freight west bound into the heart of Bellevue on a hazy morning. Did **you** chase trains this summer?



W&LE SD40-3's in three different paint schemes, Bellevue, Ohio, Jun. 6, 2012 Photo by Bill Gawthrop

CAR HOUSE

August 16, 2012

Show & Tell

Freight Cars or your favorite current project

Ron King offered an HO scale Central Valley, 36' box car lettered for the Michigan Central RR. He built the car from a kit 30 years ago. It has Kadee couplers and Atlas trucks



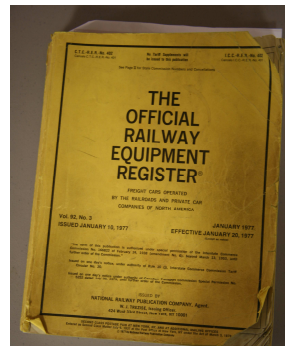
Fred Cosgrove brought in two HO scale brass traction freight cars. Each car has different paint and lettering on opposite side of the respective car. Fred also brought in two O scale undecorated traction freight cars of common design.



Tom Dart offered a brass refrigerator car in #1 scale. The car is lettered for Pacific Fruit Express. It has working doors and hatches. The car is a product of Sam Hong and was imported by Easton Railways.



David Katona brought in a copy of the Official Railway Equipment Register. The book lists reporting marks, cars by number and dimensions, railroads and private owners. This book is a great reference and tool for doing research.



John Gavasso displayed an HO scale 40' box car of steel and wood construction with plastic details. This product by Varney is lettered for GAEX #1950 DF.



George Anderson offered a sampling of photos from the ACF archives as well as a refer lettered for the Detroit & Mackinac with turtle logo. The HO scale refrigerator car was built by the late Irv Schultz.



Bill Moore brought in an HO scale box car lettered for the Mystic Terminal Company which was a subsidiary of the Boston & Maine. The MTC performed switching and transfer operations around Boston. This car is based on the 1923 ARA XM-1 design and built for the prototype in 1929.



CAR HOUSE

August 16, 2012

Jim Sieradzinski brought in a 56' all-door box car lettered for the Lake State Railway. The HO scale box car is a product of Walthers.



Terry Bossick brought in an On3 Birney Trolley by Bachmann. Terry modified the trolley with a Pennsylvania Models conversion kit to a wooden freight motor.



Phil Doolittle brought in 3 HO scale covered hoppers; PS 4427 ft³ lettered for CNW by ExactRail, PS 4750 ft³ lettered for GTW by Tangent Scale Models, and 3-bay lettered for Rio Grande by Athearn



Phil also tried powdered pastels as weathering material on the Athearn covered hopper.

Phil Kenyon bought in two flat cars with loads, a gondola letter for Monon, and a Texaco tanker.



Gene Kome brought in a 50' box car lettered for the Middletown & New Jersey. The car is an Athearn product. The M&NJ was a short line that leased 500 such cars to the National Railway Utilization Corp.



Jim Zinser offered an HO scale freight car built by the late Irv Schultz. This refer is lettered for the Bosch Brewery.



John Jackson displayed an HO scale 50' ACF box car lettered for Hillsdale County. The model is an Athearn product. Per John the car goes with his Michigan-themed rail cars.



Dan Lewis offered a water tank in N scale. Dan scratchbuilt the tank from published plans.



CAR HOUSE

August 16, 2012

Bill Gawthrop offered a B&O PS-1 box car. The model is an American Mainline product and is in 1/30th (“G scale”)



Bill also displayed a current project for a friend, the detailing of a #1 scale pony truss bridge. To the bridge superstructure, Bill added individual ties, code 250 steel rails spiked through tie plates to the ties, code 205 guard rails spike to the ties, and nuts and bolts fastening the ties to the bridge girders. Bill weathered the track components to roughly match a prototype photograph.



Jerry Shanek displayed a G scale box car lettered for the Santa Fe.



Marv Linke brought in recently acquired test stands by Polk. He found these at the National Train Show.



Marv also brought in a Hiawatha passenger car set in N scale which he bought at Silent Auction.



Saul Kalbfeld brought in redecorated HO scale box cars from basic kits of the 1960's.



CAR HOUSE

August 16, 2012

Tim Fisher offered a tank car lettered for Shell Oil Company as well as a Westinghouse heavy duty flat car. Both cars are in HO scale.



Ed Black brought in a box car and gondola which he had lettered and weathered. The models are in HO scale.



Dave Thornton offered two 50' double door box cars in O scale.



Dave also showed a book on building freight cars at the D&RGW.



Rick Ware brought in an HO scale 50' steel box car decorated with Life Magazine cover from Nov. 19, 1965 (Rick's 9th birthday). The cover featured the blackout of November 9th.



George Van Dyne displayed HO scale freight cars that he had air-brushed and custom decorated. George started with models by Athearn.



Please forward any and all erratta to Bill Gawthrop, Car House editor at wegawthrop@aol.com. Virtual tomatoes are also welcome..... it's part of our quality improvement.....

This Month's Tip

This month's tip was offered by Bill Moore. Bill relayed the information from a clinic by Jim Sacco that he attended in Grand Rapids. Bill suggested a method of modeling asphalt streets or parking lots using Sintra® plastic. The material is a PVC plastic commonly used by sign makers.

Locally, Sintra® is available from Laid Plastics on Groesbeck Highway in Warren.

CAR HOUSE

August 16, 2012

This Month's Clinic

This month's clinic was given by Vince Robinson.



Vince gave details in the development of freight cars throughout the history of railroads from the late 1800's to the mid-twentieth century.

Upcoming Events

- Oct. 28: Trainorama by Redford Model Railroad Club, Costick Community Center, Farmington Hills, www.redfordmodelrailroadclub.com
- Nov. 3-4: Gratiot Valley Train Show & Expo, Gibraltar Trade Ctr., Mt. Clemens, www.gvrr.org
- Nov. 10-11, 23-24-25: Open House, Detroit Model Railroad Club, Holly, MI, www.dmrrc.org

September Clinic

Dave Thornton is going to give a clinic on laying track at the September meeting.

Division 8 Board of Directors

Superintendent: John Jackson
jdsmjackson@sbcglobal.net
 Treasurer: Paul Runyan
prrdi61@sbcglobal.net
 Secretary: Bill Gawthrop
wegawthrop@aol.com
 Director: Saul Kalbfeld
fjgbus@gmail.com
 Director: Jerry Shanek
Jerry_shanek@yahoo.com

Next Meeting's Show and Tell

September's Show & Tell topic is Maintenance of Way, track laying tools, or your current favorite project.