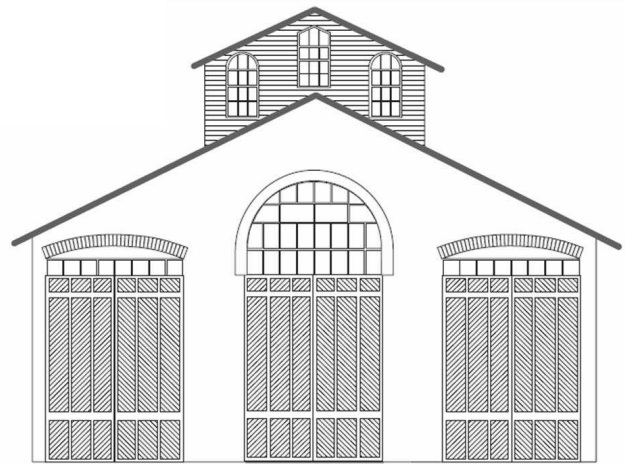


CAR HOUSE



Website:
<http://div8.ncr-nmra.org>

Website:
<http://www.nmra.org/>



THE NEWS

AUGUST 15, 2013

Model of the Third Quarter 2013

Troy, MI:



We continue with the theme - models of the Quarter in 2013 featuring a scene. The third quarter of 2013 Model of the Quarter features **a highway bridge**
 Here are the rules:

1. The scene may be in any scale.
2. The scene must be transportable to the meeting. In other words the judges must be able to judge the scene in person.
3. The minimum size for the scene is:
 - 3.1. 6" x 6" in N or smaller scale
 - 3.2. 12" x 12" in HO scale
 - 3.3. 18" x 18" in S or O scale
 - 3.4. 24" x 24" for scales larger than O
4. The scene must contain:
 - 4.1. "Vegetation" in the form of ground cover and may also include bushes, trees, "water," etc.
 - 4.2.

Convention News

Troy, MI: Newsy items from the 2013 NCR Convention Committee include:

1. As soon as you register for the Convention, you can signup for slots in the operating sessions. Use the Convention website <http://www.ncr-nmra.org/event/north-central-crossing-2013-ncr-convention> to make your choices.
2. Sales & Marketing folks would like to see more of you purchase a pike ad, See Bill Gawthrop to place your order. Your artwork and \$10 are all that are required.
3. Tour Layouts: 31 layouts will be open during the Convention. Details and photos appear on the Convention website.

Guest

Troy, MI This evening's guest was Roman Hanaski, a modeler in G scale.

New Webmaster Needed

Troy, MI: Marv Linke is "retiring" as webmaster for Division 8's site of the NMRA-North Central website. Applicants should apply to the Division 8 Superintendent, John Jackson.

We would like to thank Marv for managing the site for all these years.

CAR HOUSE

August 15, 2013

THE NEWS

Continued from the previous page

- 4.3. A bridge that carries a road way over a railroad track or tracks.
- 4.4. A railroad track or tracks fully ballasted and weathered.
5. Elements in the scene may be either built from scratch, kit-built, or kit-bashed.

Judging of entries will be conducted at the upcoming September 19th meeting.

Railfanning?

Have you been trackside lately? There's plenty to watch, photograph, or research.



Former B&O engine facilities at MK Junction near Rowlesburg, W. Va. August 10, 2013. Photo by Bill Gawthrop

Show & Tell

This Month's Theme was Anything Brass or Your Current Favorite Project

Jim Zinser brought in an HO scale switch tower which he built starting with an Atlas kit. Jim added a Vectorcut upgrade kit. He used pancake makeup style weathering material. He also made scale-size operating gooseneck lights from surface-mount LEDs.



Dan Lewis displayed an N scale Milwaukee Road caboose which he decorated. Dan also displayed catenary in N scale which he scratch-built from wood, wire, and brass flat stock.



CAR HOUSE

August 15, 2013

Ron King brought in an Erie 0-6-0 in HO scale. The prototype was class B-5 and numbered 51 – 118. Ron kitbashed this locomotive from a PFM model of a Union Pacific switcher.



Marv Linke displayed a NYC J-3A Hudson in N scale. The model is a product of Key Imports and came factory painted. The prototype powered a 20th Century Limited of the late 1930's



Greg Rich displayed a MStP&SStEM 4-4-0 in HO scale. The model is a highly modified Tyco General to follow the Baldwin prototype.



Phil Doolittle offered a current project, the upgrading and weathering of HO scale covered hoppers. On display are:

1. Tangent model rib-side, a superb model but at a cost of \$36-\$38.
2. Athearn "Blue-Box" rib-side hopper at \$6 each from a silent auction
3. Athearn "Blue-Box" hopper in the process of being modified with the roof walk removed.
4. Plano etched steel roof walk kit with brass brackets.
5. Completed upgrade of an Athearn hopper with a Plano walkway, also weathered.
6. Various tools for the project
7. Prototype photos for weathering inspiration.

Bill Gawthrop offered a B&O Class B-18 Ten Wheeler in HO scale. The model is by Sunset Models.



Larry Wolohon brought in a Great Northern caboose underframe in O scale. This represents Larry's start of a new project.



John Gavasso offered an HO scale ATSF #1900 Class 2-8-0. This was John's first brass locomotive that he purchased new. The model is by Korea's Sunset Models.



CAR HOUSE

August 15, 2013

Fred Cosgrove displayed an HO scale parlor car decorated for the Columbus, Delaware & Marion. The prototype was built by ACF. Fred's model was painted by Harry Darst who, according to Fred, had a terrible time painting the interior bulkhead. In fact, the bulkhead is still not in the car.



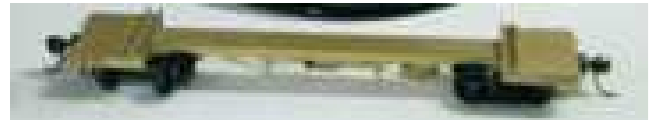
John Kline brought in a current project, a panel of skirting for this layout. John is making the skirting from ordinary paneling.



John Jackson brought in a brass CN Class H6g 4-6-0 in HO scale. John purchased the model in 1986 from the Train & Hobby Center of Birmingham from referee fees he earned for the entire 60-game season.



Rick Ware brought in an HO scale brass logging flat car.



Rick also offered a conductor's hat with brass C&O badge.



Phil Kenyon offered one prototype brass diesel engine key.



Terry Bossick brought in a brass steeple cab with Hollywood Foundry power unit. The model is by Ken Kidder.



This box was unused because someone did not bring an item for Show & Tell

CAR HOUSE

August 15, 2013

Please forward any and all erratta to Bill Gawthrop, Car House editor at wegawthrop@aol.com. Virtual tomatoes are also welcome..... it's part of our quality improvement.....

This Month's Clinic

This month George Kohs presented a very interesting clinic on the state of importing brass locomotives and rolling stock.

George gave a brief history of the importing business over the past 30 years and pointed out how the importing business has changed especially in the past ten years.

George brought in one of his current projects, a beautiful Union Pacific Challenger in O scale.



Upcoming Events	September Clinic
<p>➤ Sept. 22: Monroe Model Train Show, Monroe County Fairgrounds, Monroe, MI</p>	<p>Larry Wolohon will review the activities and events of the 2013 NMRA Convnetion in Atlanta</p>
Division 8 Board of Directors	Next Meeting's Show and Tell
<p>Superintendent: John Jackson jdsmjackson@sbcglobal.net Treasurer: Paul Runyan prrdi61@sbcglobal.net Secretary: Bill Gawthrop wegawthrop@aol.com Director: John Gavasso Director: Jerry Shanek Jerry_shanek@yahoo.com</p>	<p>Anything Southern Railway or your current favorite project.</p>