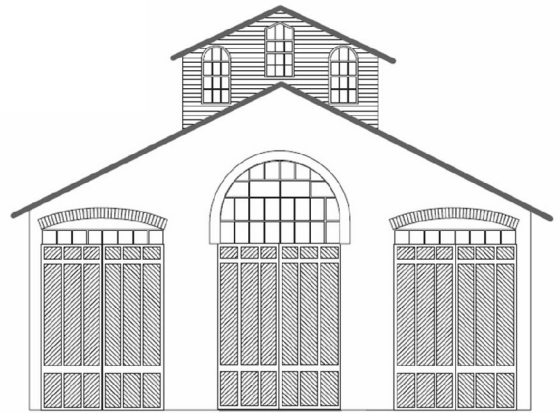


THE CAR HOUSE

Monthly Newsletter of
Division 8 North Central Region
National Model Railroad Association



Website:
<http://div8.ncr-nmra.org>



September 15, 2011

The News

MMR Plaques Finds MMR

A mystery is solved! Just when Joel Goldberg had lost hope that his MMR (#458) plaque would ever arrive; Larry Wolohon produced the plaque. Congratulations (again) Joel.



Joel's MMR achievement award was announced in the April 2011 *Car House*.

Joel right-Larry on the left

Bill Moore Wins the Model of the Quarter Contest

Bill Moore plowed away the competition with his well-weathered, Boston & Maine snow plow.



There were more entries for this Division 7 quarterly contest than any previous competition of this kind.

Here is Bill's plow:



Kalbfeld Wins People's Choice Award at National

Saul Kalbfeld won the "Favorite Train" of the People Choice Models and Photos category at the NMRA National Convention in Sacramento. His entry was the "Fonda Johnson & Gloversville."

Division 8 Fall Layout Tour

Troy, MI: Don't forget October 9th is the date for the Division 8 Fall layout Tour (in Oakland Township).

Other Entries for the Model of the 3rd Quarter

Here are other entries for the Division 8's Model of the 3rd Quarter Contest.



September 15, 2011

Lansing Legacies

Don't forget to mark your calendars for November 3 – 6, 2011 for the NCR Convention, "Lansing Legacies." Information is available on the website:

<http://lansinglegacies2011.webs.com/>

Guest

Troy, MI: Gene Meadows was a guest at tonight's meeting Gene also contributed to Show and Tell (see below).

Steam Railroading Institute Featuring NKP Berkshire #765

Owosso, MI: The Steam Railroading Institute is featuring NKP Berkshire #765 for fall color rides on October 1 and 15. See their website for details. www.michigansteamtrain.com.

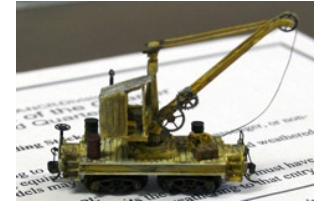
Model of the Fourth Quarter 2011

Troy, MI: The challenge for Division 8's Model of the Quarter for the fourth quarter, 2011 will be to build a piece of maintenance of way rolling stock.

The rules are:

1. MOW rolling stock can be anything, powered or not powered that was used by the prototype to maintain its right-of-way.

Quarterly Model Contest Entries continued



2. The MOW model
 - a. Can be built in any scale
 - b. Can be built using any materials
 - c. Must be operational (cannot be a static model)
3. The MOW model
 - a. Can be scratchbuilt OR built from a kit OR be kit-bashed
 - b. Must be painted and lettered

Models will be judged at the December meeting of Division (December 15, 2011).

Show & Tell

Union Pacific or your favorite current project

Jerry Shanek brought in a G scale SD-45 in UP paint. The model is by Aristo Craft.



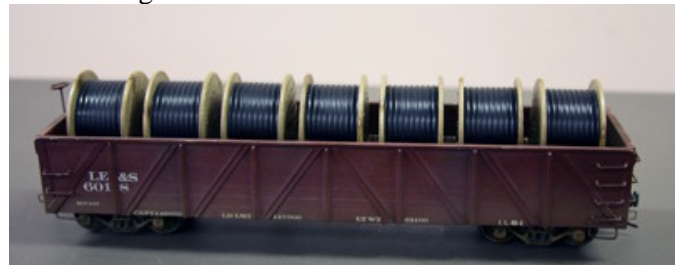
Ron King brought in 3 SD40-2's decorated for Union Pacific. Ron super detailed, painted, and decaled these HO scale Athearn models. These SD40-2's have the Canadian-style extended hoods. The prototypes were built from 1971 to 1980.



Gene Meadows displayed a number of flat cars with various loads. The loads were made from a number of everyday cast-offs.



Dave Thornton brought in a current project. This is an O scale gondola with wire reels load.



Jim Zinser displayed a Union Pacific drop-bottom gondola in HO scale. Jim believes he built this model from a Detailed Associates kit.



Ken Scherer offered an HO scale box car decorated for Union Pacific. Ken uses this model as a track cleaning car.



Fred Cosgrove offered an N scale 61-ft. bulkhead flat car with load. This car is decorated for Union Pacific.

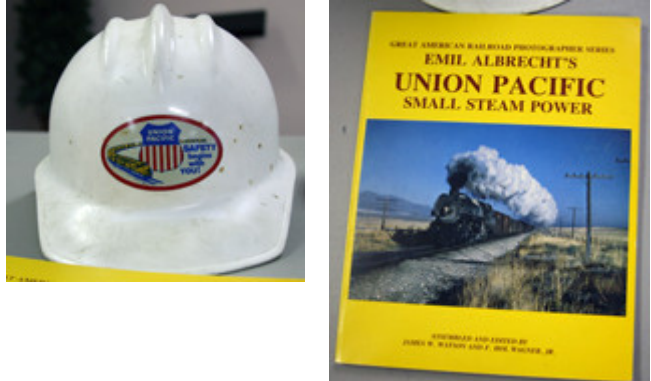


Fred also displayed a photo of a steeple cab.

Phil Kenyon brought in two HO scale freight cars decorated for Union Pacific. One car is a flat with piggy-back trailers. The other is a gondola with a ballast load.



Larry Wolohon brought in a hard hat with a Union Pacific logo and a book Union Pacific Small Steam Power by Emil Albrecht.



Joel Goldberg brought in several items that are being used to raise funds to protect the S-2 Porter "fireless cooker" loco in Somers, Montana. Joel contributed to the design of some of the materials.



Bill Gawthrop brought in a current project. This is an HO scale coal tippie which he scratchbuilt using



Evergreen plastic products, dimensional lumber and various other details. This tippie is part of a four-structure complex comprising the Patriot Mine in Queens, W. Va. On Bill's Coal & Coke Railroad.

Terry Bossick offered two street cars in N scale. One is a DSR Bachmann PCC and the other is a



Kansas City trolley set up for DCC and overhead wire.

John Kline brought in three “finds” from a yard sale. One is a vintage yard tower. The other is a Marx HO scale F-unit decorated for New Haven. The third “find” is a pad of train derailment forms.



Dan Lewis displayed a current project in N scale. This is the Gallatin Elevator in northern Indiana. Dan scratch-built this beautiful structure.



Phil Doolittle is also working on a current project in HO scale. This is the A. R. Gilmore feed mill. The mill is destined for a spot on his Free-Mo module.



Please forward any and all erratta to Bill Gawthrop, Car House editor at wegawthrop@aol.com. Virtual tomatoes are also welcome..... it's part of our quality improvement.....

This Month's Clinic

Jim Zinser brought in three DVD's. The first video featured a profile of Bob Phelps along with the layout he has been developing. Bob is a design engineer at Peco who developed the American line of Peco line of American



style turnouts. Bob worked longer at Peco than any other employee and though he's British and lives in England, he is an avid U. S. prototype modeler. Bob's HO scale layout depicts the Union Pacific in the steam-to-diesel transition era.

The second video is an amateur effort to capture an operating session on Bob's layout. This video gives numerous shots of trains running against a backdrop of an operating session audio.

The third video gives a number of scenes with restored British steam engines running in full glory in many of the different lands within England. The video includes scenes in different seasons of the year.



Upcoming Events	October "Clinic"
<ul style="list-style-type: none"> ➤ October 1 & 15, 2011: Steam Railroading Institute Fall Color tour behind NKP #765. www.michigansteamtrain.com. ➤ October 9, 2011: Division 8 Fall Layout Tour, Oakland Twp. ➤ October 29, 2011: Redford Model Steam Days Open House, Inkster, MI. www.redfordmodelrailroadclub.com. ➤ October 30, 2011: Trainorama by Redford MRC, Costick Center, Farmington Hills. www.redfordmodelrailroadclub.com. ➤ November 3 – 6, 2011: NMRA-North Central Region Convention, "Lansing Legacies." Information is available on the website: http://lansinglegacies2011.webs.com/ ➤ November 6, 2011: Gratiot Valley Train Show & Sale, Gibraltar Trade Center, Mt. Clemens, MI. www.gvrr.com. ➤ November 12 -13, 2011: Detroit Model Railroad Open House, Holly, MI. www.dmrrc.org. 	<p>Marv Linke will present October's clinic on building street lighting.</p>
Division 8 Board of Directors	Next Meeting's Show and Tell
<p>Superintendent: John Jackson jdsmjackson@sbcglobal.net</p> <p>Treasurer: Gene Kome marjgenekome@comcast.net</p> <p>Secretary: Bill Gawthrop wegawthrop@aol.com</p> <p>Director: Saul Kalbfeld fjgbus@gmail.com</p> <p>Director: Jerry Shanek Jerry_shanek@yahoo.com</p>	<p>The topic for next month's (October 20th) Show and Tell is city lighting or your favorite current project.</p>